

# KINNAIRD

COLLEGE FOR WOMEN

UNDERGRADUATE



GRADUATE



+ ADMISSION HANDBOOK +

2026-2027



## VISION & MISSION

### Vision

The Vision of Kinnaird is to be a Centre of Excellence for the education of women by offering academic programs of International Standards and engaging in research and service that supports development of new knowledge, ideas and social responsibility. This is in recognition and continuation of the reputation the College has, of being the most prominent and prestigious institution for women in Pakistan.

### Mission

The Mission of Kinnaird is to provide access to an education that is holistic, of quality, relevant to context and time and one that serves personal transformation to develop women leaders, innovators and entrepreneurs who think independently, work cooperatively and act responsibly and courageously for social transformation.

Women who are able to live according to the College Oath, "To live up to the trust placed in me, willingly and conscientiously fulfill my responsibilities and to work with integrity and loyalty; to be, rather than to seem".



## Table of Contents

Vision & Mission	02	Faculty of Social Sciences & Law	32
Message from the Principal	05	How to Apply for Admission	36
Welcome to Kinnaird	07	Kinnaird Core Curriculum	38
Campus and Facilities	09	Degree Requirements for Undergraduate Program	40
Library	11	Fee Structure for Undergraduate Programs	44
Accommodation	13	MS/ M.Phil Programs	46
Cafe	14	Fee Structure for MS/ M.Phil Programs	55
Sports	15	PhD Programs	56
Extra Curricular Activities	16	Academic Rules and Regulations	60
Directorate of Student Affairs (DSA)	17	Student Code of Conduct	63
Undergraduate Programs	18	Teaching Faculty	66
Faculty of Art & Humanities	20	Administration	76
Faculty of Life Sciences	24	Academic Calendar	78
Faculty of Mathematical & Physical Sciences	28		



## Message from the Principal

روشنی، جرات اور محبت !!

بظاہر چند سادہ الفاظ کا یہ مجموعہ کنئیر ڈکالج کی پہچان میں اور یہ تینوں ملنے ہیں تب ہی کنئیر ڈکالج بنتا ہے!! کنئیر ڈکالج سبک دہشت کی عمارت کا نام نہیں بلکہ ایک احساس کا نام ہے جو ایک دفعہ آپ کی رگوں میں پہنچے لگے تو آپ اسے اپنے سے خد نہیں کر سکتے۔ آج سے ۱۱۳ سال پہلے اسی نظریے کے پیش نظر کنئیر ڈکالج کی بنیاد رکھی گئی کہ برصغیر پاک و ہند کی لڑکیوں کو روشنی، جرات اور محبت کے پیراہن سے ملے اور آج ایک صدی گزر جانے پر بھی، کنئیر ڈکالج کو اپنی اسی شناخت پر فخر ہے۔ کنئیر ڈکالج کا یہ ستر جو ۵ طالبات کی قلیل تعداد سے شروع ہوا تھا، آج ہزاروں طالبات کے ہمراہ اسی منزل کی طرف کوشاں ہے۔

کنئیر ڈکالج نے انہیں اقتدار سے بھرپور کتنی ہی ہستیاں وطن عزیز، پاکستان کو دی ہیں، جن میں جنس ناصرہ جاوید اقبال، ڈاکٹر میرا فلیووس، ڈاکٹر کنگھت خان، نثریا انور، حاصرہ بھانگیر، منیزہ ہاشمی، پیرن یوگا، زرارہ ممتاز، سسٹرماری سسل، بیگم اختر ریاض الدین، اچھی سدھو، شیم کلپل، مسانوہ سلیم، بانو قدسیہ، بی گل، نبوید شہزاد، حدیقہ کیانی اور ان جیسی آن گنت خواتین شامل ہیں۔ اس فہرست کو مکمل کرنا چاہیں تو اس پنڈتک کے تمام صفحات کم پڑ جائیں، اس لیے یہاں پر چند ناموں کا ذکر کیا جا رہا ہے۔ یہ وہ خواتین ہیں جن کی روشنی نے دنیا کو منور کیا، جن کی ہمت سے بہت سی جواں سال لڑکیوں کو جینے کا حوصلہ ملا اور جن کی محبت نے معاشرے کو خوشگوار بنایا۔ کنئیر ڈکالج تمام خواتین کو بلا تفریق مذہب، زبان، رنگ و نسل، معاشی و سماجی حیثیت، اور قومیت کے اپنا تاہ ہے اور یہی باہمی ہم آہنگی کنئیر ڈکالج کی تہذیب کا ایک نمایاں عنصر ہے۔

سال ۲۰۲۵ء میں اسی باہمی ہم آہنگی کو فروغ دینے کے لیے Kinnaird Society For Diversity and Inclusion کا اجرا کیا گیا، جس کا مقصد معاشرے میں باہمی محبت اور ہم آہنگی کا حصول ہے۔ علاوہ ازیں کنئیر ڈکالج اپنی تمام Uniquely-Abled طالبات کا بھی خاص خیال رکھتا ہے اور باقی طالبات کی طرح انہیں تعلیم اور ترقی کے تمام مواقع فراہم کرتا ہے۔ اسی سلسلے کی ایک کڑی کنئیر ڈکالج کا Uniquely-Abled Centre ہے جہاں بطور خاص بصارت سے محروم طالبات کی رہنمائی کی جاتی ہے اور Kinnaird Society for Uniquely-Abled Students ان طالبات میں قیادت کی صلاحیت کو بھارت کے لیے تھکیل دی گئی ہے۔

کنئیر ڈکالج میں پڑھانے جانے والے تمام پروگرامز بین الاقوامی معیار کے مطابق ہیں۔ سال ۲۰۲۵ء میں ایجوکیشن ڈیپارٹمنٹ کے پیپلز اور ایم ایل پروگرامز کو W کیلگری سے نوازا گیا اور یوں دونوں پروگرامز میں W کیلگری حاصل کرنے والا واحد خواتین کا ادارہ کنئیر ڈکالج ہے۔

کھیل کے میدان میں بھی کنئیر ڈکالج کا کوئی ثانی نہیں۔ اس وقت بھی ICC T20 Women's World Cup 2026 میں شامل ہونے والی پاکستان کی قومی ٹیم میں کنئیر ڈکالج کی ۵ کھلاڑی اپنی صلاحیتوں کے جوہر دکھا رہی ہیں۔

کنئیر ڈکالج ایک معمولی ادارہ نہیں کیونکہ اس کے قابل، مجلس اور بے لوث جذبے کے حامل اساتذہ اس کی طاقت ہیں جو تعلیم کے ساتھ ساتھ تربیت کو بھی اپنا منشور مانتے ہیں۔ ہمارے اساتذہ تدریسی علوم کے ساتھ اپنی طالبات کو خود شناسی اور اعلیٰ اخلاقی اقدار کے زیور سے بھی آراستہ کرتے ہیں۔

سال ۲۰۲۵ء میں Kinnaird Core Curriculum کا اجرا مقصد کے حصول کے لیے ایک سبک سبیل کی حیثیت رکھتا ہے (صفحہ نمبر: ۳۸)۔ کنئیر ڈکالج کا یہ Core Curriculum اس طور سے تشکیل کیا گیا ہے کہ وہ طالبات کو پاکستان کی بااختیار ذہین، ذمہ دار اور بااقتدار خواتین بنا سکے جو معاشرے کی خوشحالی اور قوم کی ترقی میں اپنا نمایاں کردار ادا کر سکیں۔

کنئیر ڈکالج ایسی تمام طالبات کا منتظر ہے جو تعلیم کے ساتھ ساتھ فیرنسانی سرگرمیوں اور بالخصوص اعلیٰ اخلاقی اقدار کے حصول کی مشتاق ہیں۔ ہماری پوری کوشش ہوگی کہ ہم آپ کو تعلیم کی روشنی سے منور، کردار کی مضبوطی سے جرات مند اور تمام انسانیت کے لیے بے لوث محبت سے آراستہ کر سکیں۔

پروفیسر ڈاکٹر ارم اہم

پرنسپل

کنئیر ڈکالج فارویس، لاہور

## Welcome to Kinnaird

Kinnaird is one of the esteemed colleges for women in Pakistan and we are proud of its history and present achievements.

The name Kinnaird comes from Lady Mary Kinnaird who belonged to a titled family of Scotland. During the British period in India, certain British philanthropic enterprises, run by educated and sometimes very wealthy women from UK, worked for the education of women in India. Education was also a significant agenda for the family of Lady Kinnaird, who was politically involved with India. Her husband and her son successively were Chairmen of the committee that spoke on Indian issues in the British parliament.

The Kinnaird family raised financial support and even donated personal funds and thus the college evolved in 1913 from within Kinnaird High School which was already in existence. Today Kinnaird ranks as a premier institution of Pakistan for education of women, where over 2000 students are enrolled every year.

The college shifted to its present location in 1938 and is home to more than 5000 girls who study at the college. The beautifully laid out gardens provide a charming setting for the twenty acre campus.



## Campus and Facilities

Owned by the Association of Kinnaid College, the campus offers an inspiring academic environment that combines the institution's historic character with contemporary academic infrastructure. Its distinctive architecture reflects a rich legacy, complemented by modern facilities designed to support teaching, research, innovation, and student engagement.

Academic activities are housed in the McNair Science Block, Arts Block, Amaltas Block, Postgraduate Block, and the recently developed Library Complex, which includes a modern library, spacious classrooms, and well-equipped science and computer laboratories. Most classrooms are equipped with multimedia projectors and LED displays, and students benefit from campus-wide Internet access and the Higher Education Commission's Digital Library resources.

The Kinnaid Business Incubation Centre fosters innovation and entrepreneurship through mentorship, networking, and business development support. The campus also features two major auditoriums, Hladia Hall and the Eric Massey Auditorium, which serve as venues for academic, cultural, and co-curricular activities. Complemented by landscaped lawns, open spaces, sports grounds, a swimming pool, and recreational facilities, the campus offers a vibrant setting that promotes academic excellence, personal growth, and student well-being.





# Library

The Monnoo Library Kinnaird College for Women is transforming itself into a state-of-the-art learning and information hub, committed to empowering students, faculty, and researchers with innovative services, cutting-edge technology, and world-class resources.

Kinnaird College Monnoo Library houses a rich and diverse collection of print and digital resources designed to support the academic, research and intellectual needs of its students and faculty. The collection includes an extensive range of books, scholarly journals, magazines, newspapers, and a growing repository of electronic resources spanning all disciplines offered at the College.

The Library follows an open-stack system and offers dedicated reading areas, collaborative spaces, individual research focus cabins, a digital library zone, and user-centered services, fostering an accessible, independent, and research-friendly learning environment.

A fully equipped Uniquely Aabled Students Lab a distinctive feature of Kinnaird Library, featuring Braille resources, Perkins Braille, assistive software-enabled computers, and audio recorders, ensures inclusive learning and research support.





# Accommodation

Residential facilities are available to students in three hostels custom built for the purpose. Apart from dormitories, each of the three hostels provides bedrooms for triple, double or single occupancy and its own common room. A central dining room is provided for the residents of all three hostels.



## Café

The Kinnaird Association runs the KC Cafeteria which provides an area both indoors and outdoors where students can relax and enjoy their meal. Students can choose from a variety of food items and enjoy freshly made-to-order snacks with their favorite beverage.

The cafeteria is designed to promote a welcoming and social atmosphere, allowing students to take a break between classes and interact with peers.



## Sports

Kinnaird College for Women is proud to offer high-quality sports facilities and a dynamic environment that nurtures both leadership and excellence in sports. With a rich legacy of producing exceptional athletes who have represented Pakistan at prestigious platforms such as the Commonwealth Games, Olympics, Asian Games, SAF Games, Asian Junior Championships, and ICC World Cups, Kinnaird continues to be a beacon of sporting excellence. The campus has a wide range of sports facilities, including fields and courts for hockey, cricket, baseball, basketball, and tennis. To support the overall fitness and well-being of students, the college also offers a fitness center and a swimming pool. Kinnaird takes immense pride in its athletes, who consistently bring honor and laurels to the institution.

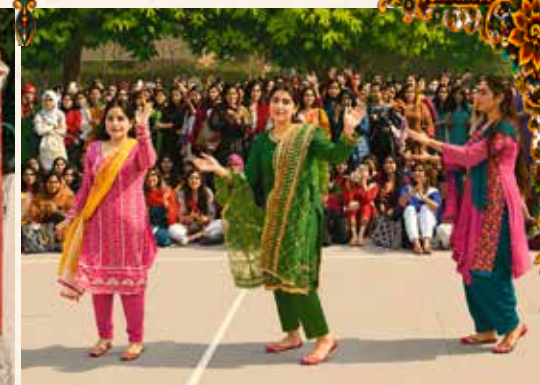
### Sports Achievements for the years 2025-2026

- More than 80 women athletes of Kinnaird have represented Pakistan at International level.
- Kinnaird in Collaboration with the Australian High Commission organized 7th Girls Cricket Cup.
- Sadia Iqbal ranked Number 1 Bowler in ICC T-20 Ranking.
- Kinnaird College celebrated ICC Women's Cricket Week in collaboration with Pakistan Cricket Board.



# Extracurricular Activities

Along with providing excellent teaching facilities to students, Kinnaird adds an extra dimension by providing them an opportunity to become members of the student council, and the clubs and societies of the college. Students participate in a wide range of activities that exemplify the diversity of interests and talents within the college community and help students to be creative, develop their confidence, take initiatives and be prepared for real life situations.



# Directorate of Student Affairs

The Directorate of Student Affairs (DSA) at Kinnaird College for Women is the cornerstone of a vibrant, safe, and empowering campus experience. Led by Director Dr. Kalsoom Akhtar, alongside Assistant Directors Dr. Anum Hayat and Dr. Shireen Mushtaq, the DSA serves as a vital bridge connecting students, faculty, and administration. The directorate champions holistic growth by overseeing a dynamic network of student-led clubs and societies, ranging from sports and drama to entrepreneurship. Committed to inclusivity and leadership training, the DSA provides essential counseling and advisory services, ensuring every young woman discovers her potential, finds her voice, and builds lasting connections.

Functioning under the guidance of the DSA, the Student Council comprises fifteen societies and eleven clubs. To ensure comprehensive representation, leadership opportunities are extended to students across all academic levels—including intermediate, undergraduate, and postgraduate—giving every segment of the student body a unified voice on campus.



# Undergraduate Programs

## Faculty of Arts & Humanities

- § BS Applied Linguistics
- § BS English Language & Literature
- § Bachelor of Education
- § BS Urdu Literature
- § Bachelor in Fine Arts
- § BS Media & Communication Studies
- § Bachelor of Design
  - Textile Design
  - Fashion Design

## Faculty of Life Sciences

- § BS Biology
- § BS Biochemistry
- § BS Biotechnology
- § BS Food Science & Human Nutrition
- § BS Horticulture
- § BS Genetics

## Faculty of Social Sciences & Law

- § BS Accounting & Finance
- § BS Psychology
- § Bachelor of Business Administration
- § BS Economics
- § BS International Relations
- § Bachelor of Laws
- § BS Political Science
- § BS Physical Education

## Faculty of Mathematical & Physical Sciences

- § BS Chemistry
- § Bachelor of Computer Science
- § BS Environmental Sciences
- § BS Geography
- § BS Mathematics
- § BS Physics
- § BS Remote Sensing & GIS
- § BS Statistics



# Faculty of Arts & Humanities

## BS Applied Linguistics

This four-year degree program offers an inclusive range of major courses related to the field of contemporary research trends in Applied Linguistics and pedagogy. The BS Honors in Applied Linguistics program envisages enhancing students' understanding of current issues in the field of Applied Linguistics. Subject areas in this degree program complement a wide range of subjects, including Historical Linguistics, Artificial Intelligence & Language, Phonetics & Phonology, Syntax, Discourse Analysis, Psycholinguistics, Semantics, Pragmatics, Computational Linguistics, Integrated Language Skills, Natural Language Processing, Sociolinguistics and Forensic Linguistics.

### Admission Requirement

- FA/F.Sc Part-I with minimum 60% marks OR A-level in three main subjects (no subsidiary) with minimum Grade B (60%) with Equivalence Certificate OR Grade 12 with minimum Grade B (60%) with Equivalence Certificate
- Candidates must appear for an Aptitude Test.

## Bachelor of Education

The B.Ed. Honors program at Kinnaird College for Women is proudly ranked in the W Category by the National Accreditation Council for Teacher Education, placing it among only four universities in Pakistan to achieve this distinction.

The four-year B.Ed. Honors program is designed for students seeking rigorous training to become teachers. The B.Ed. Honors program will train students to excel as teachers, as well as understand the intricacies of teaching such as teaching methodologies, classroom management, foundations of education, guidance and counseling, classroom assessment, and psychology of learning, among other topics. They will also study interdisciplinary courses that highlight the relationship between education and other disciplines that influence the process of teaching and learning. Furthermore, students will become familiar with the

educational policies that impact the implementation of educational programs. Students in the program will have practical experience in the classroom under supervision to gain practical knowledge of the theories they have studied in earlier semesters. Practicum is mandatory for every student. Students will conduct research in the field of education under the guidance of their supervisors.

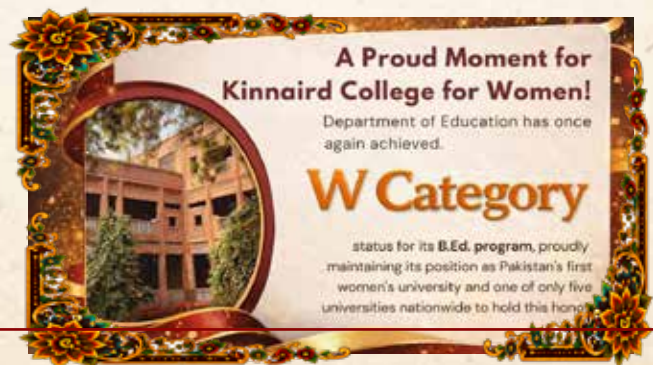
In addition to gaining knowledge and practice in the selected discipline, Kinnaird College for Women emphasizes critical thinking, tolerance, and a sense of civic and social responsibility for the holistic development of our students.

### Admission Requirement

- FA/F.Sc Part-I with minimum 60% marks OR A-level in three main subjects (no subsidiary) with minimum Grade B (60%) with Equivalence Certificate OR Grade 12 with minimum Grade B (60%) with Equivalence Certificate
- Candidates must appear for an Interview.

## BS English Language & Literature

This dynamic program spread over four years provides students with a vast exposure to various genres of English literature from medieval age till the present time. It engages with writers, critics and theorists from all over the globe, with a special emphasis on Post-colonial, South Asian and Pakistani English works. The program is innovative and demanding that inculcates in-depth analytical reading and writing skills in the students. It culminates in a high level research



dissertation that enhances students' abilities to present creative ideas, develop independent research and integrate interdisciplinary projects in the community as socially responsible citizens.

### Admission Requirement

- FA/F.Sc Part-I with minimum 60% marks OR A-level in three main subjects (no subsidiary) with minimum Grade B (60%) with Equivalence Certificate OR Grade 12 with minimum Grade B (60%) with Equivalence Certificate.
- All Candidates must appear for an Aptitude Test and only short listed candidates will be called for the Interview.

## BS Urdu Literature

The Department of Urdu envisions to create a Centre of Excellence for the dissemination of knowledge pertaining to literature and its related fields by enlightening the students

for their development of creative, interceptive, critical and research abilities through inter literary and inter disciplinary awareness. The Department of Urdu focuses on producing knowledgeable, enlightened and well trained graduates and well versed female students for roles in fields of academia, research, translation, educational and non-educational institutions by inculcating knowledge of literary task and skills of interest articulation.

### Admission Requirement

- FA/F.Sc Part-I with minimum 55% marks OR A-level in three main subjects (no subsidiary) with minimum Grade C with Equivalence Certificate OR Grade 12 with minimum Grade C with Equivalence Certificate
- Candidates must appear for an Interview.

## Bachelor in Fine Arts ( BFA)

(Painting, Miniature Painting)

This four-year, studio-intensive program develops students' technical proficiency, conceptual thinking, and aesthetic sensibility, while fostering a strong understanding of artistic practices, visual culture, and creative expression. Learning is situated within the broader context of Fine Arts, encompassing historical, contemporary, and emerging media, and encouraging engagement with the social, cultural, and ethical dimensions of art.

The first three semesters focus on multidisciplinary studio practice, building foundational skills in technique, composition, and spatial awareness. In the fourth semester, students are introduced to Painting and Miniature Painting, after which they select one area for specialization. From the fifth semester onwards, students pursue focused study in their chosen discipline, integrating studio practice with theoretical and interdisciplinary approaches, culminating in a capstone project.

Studio courses emphasize hands-on engagement across diverse media, while theory courses develop critical and historical perspectives, preparing graduates for professional practice and advanced study.

### Admission Requirement

- FA/F.Sc Part-I with minimum 50% marks OR A-level in three main subjects (no subsidiary) with minimum Grade C (50%) with Equivalence Certificate OR Grade 12 with minimum Grade C (50%) with Equivalence Certificate
- All applicants must appear for an aptitude test based on drawing ability.



## Bachelor of Design

(Textile Design)

This dynamic 4-year program cultivates both artistic creativity and practical industry skills. The first year focuses on foundational studies in drawing, design, 2D/3D modeling, and theory. From Semester 3, students specialize in core Textile and Fashion courses such as print design, conceptual textiles, weaving, knitting, stitching, dyeing, and marketing. Advanced coursework in Semesters 5 and 6 emphasizes sustainable practices, digital design, entrepreneurship, and includes an industry internship. In the final year, students undertake a Capstone Project, explore product development, research, and merchandising, culminating in a self-directed Textile Thesis exhibited at the end of Semester 8.

(Fashion Design)

The 4-year Fashion Design program, offered under the Textile Design department, is tailored for individuals seeking to excel in both creative expression and academic achievement within the field of Fashion Design. The program features a well-rounded curriculum that blends advanced studies in fashion and digital design with practical training in garment construction, pattern making, trend analysis, and AI-driven solutions. By merging theoretical knowledge with hands-on experience, the program equips students to harmonize their artistic vision with scholarly pursuits. This holistic approach not only sharpens design capabilities but also expands career pathways for women in the fashion

industry, promoting a dynamic environment where creativity and academia thrive together.

**Note:** Students enrolled in Textile Design and Fashion Design will undertake an Integrated foundation study program alongside the Fine Art department during the initial semesters. Starting from Semester 3, the Textile Design and Fashion Design programs will diverge, with each following its own specialized curriculum as outlined in the academic roadmap.

### Admission Requirement

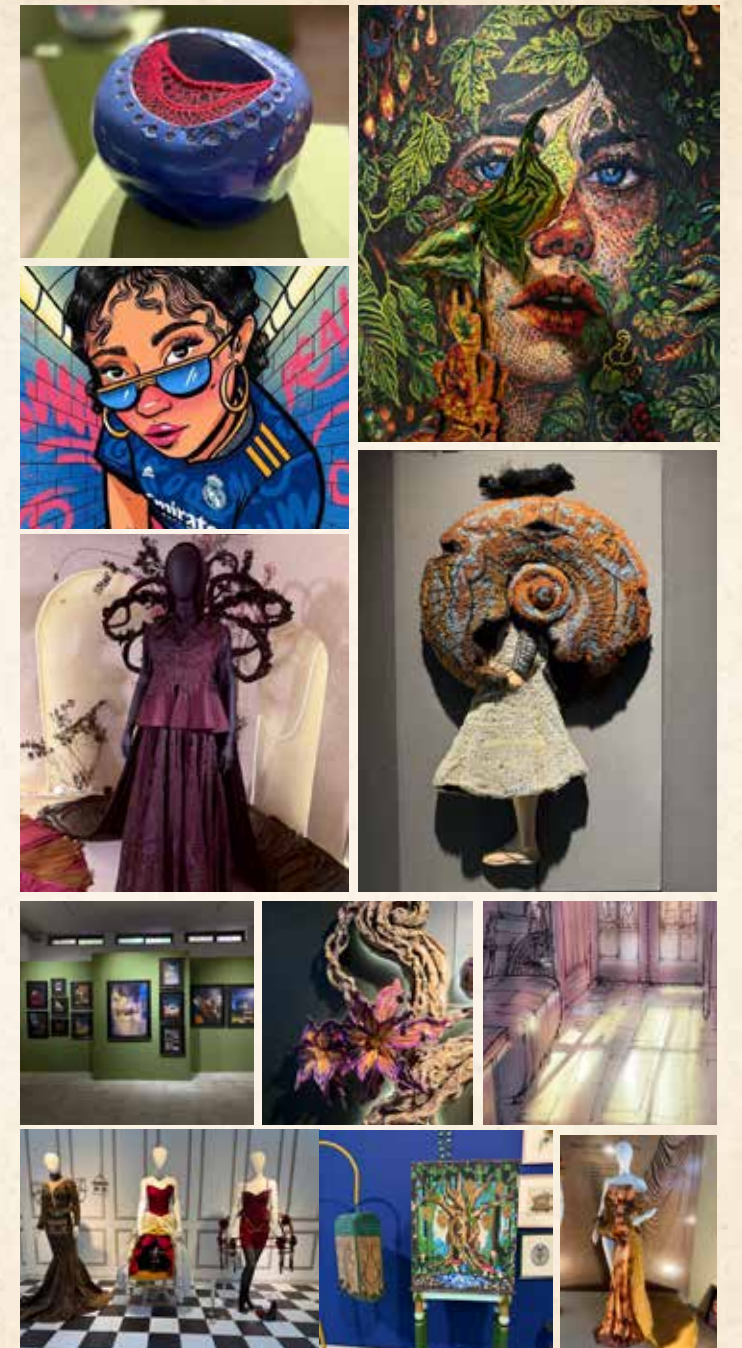
- FA/F.Sc Part-I with minimum 50% marks OR A-level in three main subjects (no subsidiary) with minimum Grade C (50%) with Equivalence Certificate OR Grade 12 with minimum Grade C (50%) with Equivalence Certificate
- All candidates must appear for an aptitude test based on drawing and design ability.

## BS Media & Communication Studies

The Bachelor degree in Media & Communication Studies offered by Kinnaird Media School is a highly rigorous and wide-ranging program for those students who are confident in their ability to become a successful part of the media industry. Our program is highly practice-oriented, providing hands-on training to our students in the areas of their interest. It offers solid foundations in all aspects of the media, as we unravel the world of the media from the general to the specific, from the theoretical to the practical, with research work and special projects; all with the aim to put our students at the top of the media scene once they step out in the real world.

### Admission Requirement

- FA/F.Sc Part-I with minimum 60% marks OR A-level in three main subjects (no subsidiary) with minimum Grade B (60%) with Equivalence Certificate OR Grade 12 with minimum Grade B (60%) with Equivalence Certificate
- Candidates must appear for an Interview.



# Faculty of Life Sciences

## BS Biology

The BS Biology program at Kinnaird College for Women stands as a premier, privileged offering that transcends traditional science education by seamlessly blending rigorous academic inquiry with real-world applicability. Its scope is vast and dynamic, encompassing classical disciplines like zoology, botany, and genetics, while also diving into cutting-edge fields such as molecular biology, biotechnology, environmental science, and bioinformatics. Graduates emerge prepared not only for advanced studies and research but also for diverse career pathways in healthcare, pharmaceuticals, agriculture, conservation, forensic science, and clinical laboratories. The program is powerfully supported by Kinnaird's state-of-the-art laboratory facilities, including well-equipped molecular biology labs, histology suites, microbiology culture rooms, and advanced microscopy centers—where students gain hands-on experience with industry-grade instruments like PCR machines, gel electrophoresis units, spectrophotometers, and centrifuges. Beyond technical mastery, the curriculum uniquely fosters entrepreneurial skills, encouraging students to identify market gaps in health diagnostics, sustainable agriculture, waste management, and nutraceuticals. Through project-based learning, business plan competitions, and mentorship in startup incubation, students learn to transform biological innovations into viable enterprises. As a privileged institute with a legacy of empowering women through excellence, Kinnaird not only delivers a world-class biology education but also cultivates confident, job-ready graduates who are both scientists and innovators, ready to lead in Pakistan's evolving bioeconomy and beyond.

## Admission Requirement

- F.Sc (Pre Medical) Part-I with minimum 60% marks OR A-level in three main subjects (no subsidiary) with minimum Grade B (60%) with Equivalence Certificate OR Grade 12 with minimum Grade B (60%) with Equivalence Certificate.
- Candidates must appear for an Interview.

## BS Biochemistry

The department strives to instill basic knowledge of Biochemistry among the students. It specifically teaches biochemical mechanisms operating in a living system at molecular level that can be applied in daily life scenarios. The department imparts the skills of leadership, practical knowledge and innovation amongst its students in order to make them serve in various sectors of health, agriculture, industry and education. The elaborative course contents and impactful teaching methodologies develop high quality training in the rapidly growing fields of science. Success of Biochemistry has led the biochemists to develop new technologies in vast areas of biological sciences. It is no surprise that this field not only interests a large number of people but also offers various career opportunities in research organizations, academics and industries.

## Admission Requirement

- F.Sc Part-I (Pre Medical) with minimum 60% marks OR A-level in three main subjects (no subsidiary) with minimum Grade B (60%) with Equivalence Certificate OR Grade 12 with minimum Grade B (60%) with Equivalence Certificate
- Candidates must appear for an Interview.

## BS Biotechnology

Biotechnology is a highly interdisciplinary field that combines biological sciences with engineering technologies to produce products that advances healthcare, medicine, agriculture, food, pharmaceuticals and environment control. It draws heavily from a number of biological science disciplines such as Microbiology, Biochemistry, Genetics, Molecular Biology, Immunology, Cell and Tissue Culture etc. for understanding the occurrence and treatment of diseases, development of agriculture, food production, protection of the environment and many more. The BS program in Biotechnology at Kinnaird equips its graduates with the necessary intellectual and practical skills as well as required theoretical knowledge to begin careers in medical research, in hospital and public

health laboratories, and also in the pharmaceutical, food and agricultural industries.

## Admission Requirement

- F.Sc (Pre Medical) Part-I with minimum 60% marks OR A-level in three main subjects (no subsidiary) with minimum Grade B (60%) with Equivalence Certificate OR Grade 12 with minimum Grade B (60%) with Equivalence Certificate.
- Candidates must appear for an Interview.



## BS Food Science & Human Nutrition

The curriculum is designed to provide students with a solid foundation in food and nutritional sciences so as to equip them to face current challenges related to food, nutrition & health. The program focuses on building and developing skills amongst students by promoting participation in experiential learning projects and helping them prepare for active involvement in local and global issues related to food and nutrition. The program also addresses critical issues such as nutrition for limited resource audience which is very critical in the perspective of Pakistan.

Kinnaird College for Women, Lahore was amongst the first educational institution to start a BS program in Food Science & Human Nutrition in Pakistan. This unique combination of Food Science and Human Nutrition prepares our students for a large variety of career opportunities which includes hospitals, institutional foodservice, airline catering, food industry and entrepreneurs are just a few to mention. Our alumni are employed in reputed organizations and are seen working successfully in various spheres which include Community Educators, R & D Industry, Academia, Consultant Nutritionists, Dietitians, Food Authority, Centre of Peace and Development Initiative, Centre of Research and Policy Development, Nutrition Subject Specialist, Campus Nutrition Counselor, Food Service Manager, Expert for development of Nutrition Curriculum at primary level.

### Admission Requirement

- F.Sc Part-I (Pre Medical)/BS Part-I from home economics with minimum 60% marks OR A-level in three main subjects (no subsidiary) with minimum Grade B (60%) with Equivalence Certificate OR Grade 12 with minimum Grade B (60%) with Equivalence Certificate.
- Preference will be given to the students who have studied Food Science & Nutrition in O/A Level.
- Candidates must appear for an Interview.

## BS Horticulture

In order to solve global issues like public health, environmental sustainability, and food security, horticulture - the science of growing plants for human use - is essential.

This program seeks to deepen students' understanding of the interrelationships between humans, plants, and the environment while providing them with the tools to tackle today's most pressing issues. The program promotes resource-efficient practices, increases yields, and diversifies crop production to provide solutions. Horticulture also offers opportunities for fulfilling careers, particularly for women, and makes a significant contribution to rural development and economic growth.

Kinnaird College wants to give students the tools they need to pursue careers in research, agribusiness, landscaping, floriculture, and agriculture. Through a comprehensive education that includes soil science, plant biology, crop production, and pest management, the program equips students to address difficult problems like environmental conservation and food security. All things considered, the BS in Horticulture is in line with the college's dedication to social responsibility, innovation, and academic brilliance.

### Admission Requirement

- F.Sc (Pre Medical) Part-I with minimum 60% marks OR A-level in three main subjects (no subsidiary) with minimum Grade B (60%) with Equivalence Certificate OR Grade 12 with minimum Grade B (60%) with Equivalence Certificate.
- Candidates must appear for an Interview.



## BS Genetics

Genetics is one of the most fascinating fields that have emerged in the 21st century. The study of human DNA is not only intellectually fascinating, but it also has plenty of practical applications, from the use of DNA in court cases to the discovery of new therapies for genetic diseases, a thorough understanding of the human genome can have important medical, social and legal impacts. Pakistan is an agriculture based economy, thus research and understanding of genetics is inevitable for sustainable growth and health of our crops and cattle. Our country is amongst the worst hit countries with genetics disorders like thalassaemia, hereditary deafness, blindness etc. Graduates from this degree will have better understanding of our genomes and will harness vast research opportunities in this field nationally and internationally. Having a deeper understanding and solid foundation of genetics, its graduates will also help create awareness among our population.

### Admission Requirement

- F.Sc Part-I (Pre Medical) with minimum 60% marks OR A-level in three main subjects (no subsidiary) with minimum Grade B (60%) with Equivalence Certificate OR Grade 12 with minimum Grade B (60%) with Equivalence Certificate.



Equivalence Certificate.

- Candidates must appear for an Interview.



# Faculty of Mathematical & Physical Sciences

## BS Chemistry

Recognizing the pivotal role of chemistry in national development and progress, Department of Chemistry is committed to groom exceptional chemistry professionals through academic and research excellence to thrive in academia as well as industry and to deliver a robust blend of in-depth knowledge and practical expertise to contribute towards socio-economic progress. Our BS Chemistry program is aimed to deliver robust foundational and advanced knowledge of modern chemical concepts and emerging technologies to meet global challenges, experimentation and analytical skills among the students including synthesis, use of instruments, computational tools, analysis and interpretation of chemical data that will be useful in solving academic and industrial problems effectively. Student will be able to effectively communicate chemical knowledge and research findings through written, oral and digital platforms, fostering clarity, accuracy and scientific integrity.

### Admission Requirement

- F.Sc Part-I with minimum 60% marks OR A-level in three subjects three main subjects (no subsidiary) with minimum Grade B (60%) with Equivalence Certificate OR Grade 12 with minimum Grade B (60%) with Equivalence Certificate
- Candidates must appear for an Interview.

## BS Computer Science

The BS Computer Science program at Kinnaird College for Women is designed to prepare students for a rapidly evolving technological landscape driven by advancements in artificial intelligence, data science, cybersecurity, and software engineering. The program offers a well-structured curriculum that integrates strong theoretical foundations with practical, hands-on experience through modern tools, platforms, and project-based learning. Students develop essential skills in problem-solving, critical thinking, and innovation, enabling them to design and implement effective computing solutions. The program emphasizes collaborative

work, communication skills, and interdisciplinary learning to prepare graduates for professional environments. In addition to technical expertise, the program promotes ethical computing practices, digital responsibility, and awareness of the societal impact of technology. With a focus on adaptability and lifelong learning, graduates are well-equipped to pursue careers in software development, data analytics, artificial intelligence, cybersecurity, and research, as well as advanced academic studies.

### Admission Requirement

- F.Sc Part I with Pre Engineering / Pre Medical/ICS Stats / ICS Physics with minimum 60% marks OR A-level in three main subjects (no subsidiary) with minimum Grade B (60%) with Equivalence Certificate and must have studied Mathematics.
- Candidates must appear for an Aptitude Test.

**Note:** All students with F.Sc Pre Medical background must pass deficiency courses of Mathematics of 6 credit hours within one year.



## BS Environmental Sciences

Environmental Sciences is an interdisciplinary field which studies the interaction of human systems and the environment and ways to combat environmental problems in order to live more sustainably. Today the world is faced with pressing environmental challenges such as climate change, air and water pollution, food security, waste disposal, global warming, soil contamination, biodiversity loss, urban sprawl, and many others which have affected every living organism on the earth. The department aims to raise awareness regarding environmental issues and produce dynamic young environmentalists and scholars with professional expertise in the field of Environmental Sciences.

The 4 years' undergraduate degree program will help students gain an in-depth understanding of contemporary environmental issues and challenges in order to develop human resource equipped with knowledge and necessary skills to address the same and contribute towards sustainable development. The program has been designed to deliver the students with concepts, methods and practical field experience in air quality, water quality assessment, endangered species management, industrial hygiene, environmental policy, environmental pollution, impact assessment and pollution control technologies. The degree prepares the students for employment at entry-level positions in government sector, private industry, environmental consulting firms/Industries/NGOs, regulatory agencies, teaching and other areas as well as equips them with solid foundation for pursuing higher studies at well reputed National and International institutions.

### Admission Requirement

- F.Sc Part-I with minimum 60% marks OR A-level in three main subjects (no subsidiary) with minimum Grade B (60%) with Equivalence Certificate OR Grade 12 with minimum Grade B (60%) with Equivalence Certificate
- Candidates must appear for an Interview.

## BS Geography

Geography as a discipline embodies an intrinsic curiosity about the world around us. It encourages students to investigate a broad range of themes, including climate

change, population dynamics, urban development, resource management, environmental sustainability, political landscapes, economic systems, and the spatial distribution of various phenomena. By studying geography, students acquire the tools to explore not only the physical and cultural characteristics of different places but also the interconnectedness between these places and the processes that shape them.

A key aspect of the BS Geography program is the emphasis on spatial analysis. Effective communication of geographical knowledge, both orally and in written form, is emphasized to enable geographers to convey complex concepts to diverse audiences, bridging the gap between academia and the wider society. The interdisciplinary nature of geography makes it a versatile degree choice. Graduates with a BS in Geography can pursue diverse career paths. They may find opportunities in government agencies, environmental consulting firms, non-profit organizations, urban and regional planning, market research, transportation, GIS analysis, climate change research, and international development, among others. Moreover, the skills acquired through the study of geography, such as critical thinking, spatial analysis, and problem-solving, are highly transferable and can be applied in various sectors.

### Admission Requirement

- FA/F.Sc Part-I with minimum 55% marks OR A-level in three main subjects (no subsidiary) with minimum Grade C with Equivalence Certificate OR Grade 12 with minimum Grade C with Equivalence Certificate.
- Candidates must appear for an Interview.



## BS Mathematics

In today's data-driven and technologically advanced world, Mathematics serves as the cornerstone of innovation across every sector—from artificial intelligence and data science to finance, engineering, and the natural sciences. The BS Mathematics program at Kinnaird College is designed to cultivate a new generation of analytical thinkers, researchers, and problem-solvers equipped to meet the demands of a rapidly evolving global landscape. In an era shaped by data, algorithms, and intelligent systems, mathematical literacy is more essential than ever. Our program integrates a strong foundation in classical mathematics with cutting-edge courses such as Machine Learning, Data structures and Algorithms, Numerical computing and advanced programming. With a forward-looking academic design and mentorship from highly competent faculty, our graduates will be well-prepared to pursue prestigious advanced degrees such as MS in Machine Learning, MS in Data Science, MS in Artificial Intelligence and other computation based higher studies. Whether your goal is academic research, high-tech industry, finance, or data-driven innovation, the BS Mathematics program at Kinnaird College opens doors to a world of possibilities. Throughout the program, students will gain hands-on experience with industry-standard tools including MATLAB, Python, LaTeX, Mathematica, and SPSS, gaining practical expertise in mathematical modeling, data analysis, simulation, and algorithmic thinking. At Kinnaird, we aim not only to educate but to inspire. Our mathematics graduates emerge as strategic thinkers, ready to lead in academia, research, finance, technology, and beyond. A strong work ethic, curiosity, and a passion for mathematics are the only prerequisites for success in this transformative program.

### Admission Requirement

- F.Sc Pre-Engineering/ICS Part-I with minimum 60% marks OR A-level in three main subjects (no subsidiary) with minimum Grade B (60%) with Equivalence Certificate OR Grade 12 with minimum Grade B (60%) with Equivalence Certificate.
- Candidates must have 60% marks in Intermediate/ A Level Mathematics.
- Candidates must appear for an Interview.



## BS Physics

The four year BS program offers a well structured and progressive curriculum regarding different fields of physics thus enriching their academic experience. There is utmost importance given to conceptual clarity, analytical reasoning and problem-solving skills. State of the art laboratories are made available to students which support the translation of theoretical knowledge into practical applications while developing precision and observation in experimental skills. Students are encouraged to carry out research projects which help them in pursuing their further studies nationally as well as internationally. Whether your goal is groundbreaking research, technological innovation, or education, our program gives you the mathematical and analytical foundation to succeed anywhere. Ignite your curiosity and start your journey today. We train you not just to understand the world as it is, but to build the technologies of tomorrow. Step into the lab, push the boundaries of innovation, and prepare yourself for a career at the cutting edge of science.

### Admission Requirement

- F.Sc Pre Engineering / Pre Medical / ICS Physics Part-I with minimum 60% marks OR A-level in three main subjects (no subsidiary) with minimum Grade B (60%) with Equivalence Certificate OR Grade 12 with minimum Grade B (60%) with Equivalence Certificate.
- Candidates should have studied mathematics in Intermediate /A-Levels.
- Candidates must appear for an Interview.



## BS Remote Sensing & Geographical Information System

The Bachelor of Science (BS) in Remote Sensing and Geographical Information Systems (RS & GIS) is an interdisciplinary undergraduate program that integrates the principles of remote sensing technologies with Geographical Information Systems (GIS) applications. Remote sensing refers to the process of acquiring information about the Earth's surface from a distance, typically using satellite, aerial, or drone-mounted sensors. GIS, on the other hand, involves the storage, analysis, and visualization of spatial data for a wide range of applications. To stay abreast of emerging technologies and evolving global demands, this program is designed for students with interests in environmental management, information technology, surveying, agriculture, forestry, business management, archaeology, military sciences, and geography. The curriculum includes training in the use of key software platforms such as ArcGIS, ERDAS Imagine, Python, and QGIS. Additionally, students will develop proficiency in Global Positioning Systems (GPS), satellite and aerial imagery analysis, and other spatial technologies. Graduates of this program will possess a strong theoretical understanding of remote sensing and GIS, coupled with practical experience that positions them competitively in the job market. The skill set acquired through this degree opens up diverse career opportunities across the public and private sectors.

### Admission Requirement

- FA/F.Sc Part-I with minimum 55% marks OR A-level in three main subjects (no subsidiary) with minimum Grade C with Equivalence Certificate OR Grade 12 with minimum Grade C with Equivalence Certificate.
- Candidates must appear for an Interview.

## BS Statistics with Specialization in Data Science

Statistics is a vitally important discipline with wide-ranging applications across science, engineering, technology, business, and industry. It provides essential tools for solving complex problems and supports informed decision-making through the analysis of real-world data.

In today's technology-driven and data-centric world, Data

Science has emerged as a transformative field that combines statistical methods, computational techniques, and domain knowledge to extract meaningful insights from large and complex datasets. It plays a crucial role in areas such as artificial intelligence, machine learning, predictive analytics, and big data management, making it an essential component of modern education and industry.

The BS Program in Statistics with specialization in Data Science is designed to meet these evolving demands by equipping students with strong analytical, statistical, and computational skills. The program enables students to develop expertise in handling, analyzing, and interpreting complex data, preparing them to contribute effectively in both professional and research domains. The curriculum features key courses such as Data Visualization, Data Mining, R, Python, and Machine Learning, offering a robust foundation in both statistical theory and applied data science. Statistical learning, with a strong emphasis on Data Science subjects, enables students to analyze and predict a wide range of phenomena, including production processes, biomedical outcomes, weather patterns, and climate change. These advanced analytical techniques also support effective resource allocation, strategic planning, and future forecasting, while playing a pivotal role in shaping modern, data-driven economies.

### Admission Requirement

- FA/F.Sc Part-I with minimum 55% marks OR A-level in three main subjects (no subsidiary) with minimum Grade C with Equivalence Certificate OR Grade 12 with minimum Grade C with Equivalence Certificate.
- Candidates must have 55% marks in Intermediate/ A Level Mathematics.
- Candidates must appear for an Interview.

# Faculty of Social Sciences & Law

## BS Accounting & Finance

The Bachelor's program in Accounting and Finance provides students with essential skills to understand and participate in the complex process of identifying, measuring, and communicating financial information. Utilizing a variety of accounting tools like financial statements and cash flow analyses, students learn to present financial data effectively, aiding stakeholders in making informed decisions. Going beyond theory, the curriculum emphasizes practical application through real-world scenarios, including case studies, internships, and collaborative projects. The program also focuses on honing analytical and critical thinking abilities.

Central to the program is the development of ethical and professional values, emphasizing integrity, honesty, and transparency in financial reporting and decision-making. Graduates of the program are prepared for diverse career paths in banking, consulting, auditing, taxation, and financial analysis. Furthermore, the program provides a solid foundation for further education in emerging fields like cloud computing, block-chain, and data analytics, which are poised to transform financial reporting and decision-making processes.

### Admission Requirement

- FA/F.Sc Part-I with minimum 60% marks OR A-level in three main subjects (no subsidiary) with minimum Grade B (60%) with Equivalence Certificate OR Grade 12 with minimum Grade B (60%) with Equivalence Certificate.
- Candidates must appear for an Interview.

## BS Psychology

The 4-year BS program in Psychology aims to provide students with a well-rounded knowledge base and application in the domains of Psychology. The curriculum is designed to introduce students to the theories of psychology and their application. The program focuses on experiential teaching so students can relate the concepts to practice. Students are required to conduct a research project under the supervision of a faculty. The experience of conducting

the research and writing the research report hones students' research skills. Students are expected to complete their internship during the summer and document their learning and experience in the form of a report.

### Admission Requirement

- FA/F.Sc Part-I with minimum 60% marks OR A-level in three main subjects (no subsidiary) with minimum Grade B (60%) with Equivalence Certificate OR Grade 12 with minimum Grade B (60%) with Equivalence Certificate
- Candidates must have 60% marks in psychology in F.A/A-Level or 60% marks in biology in F.Sc/A-Level.
- Candidates must appear for an Interview.

## Bachelor of Business Administration

The Bachelor of Business Administration degree prepares students to operate effectively in the business world of today and to meet the demands of the future. This degree provides students with knowledge, skills and attitude to engage effectively with the unprecedented challenges facing the world today such as emerging environmental concerns, international financial markets' volatility, electronic commerce and intense global competition among others. Specialization, flexibility and a global approach to new opportunities characterize the way business operates. We integrate theory with practice, combine classroom teaching with actual management practice providing a broad spectrum of knowledge and skills required for business management. This approach enhances competence, problem-solving skills, critical thinking, analytical abilities, presentation skills and creativity. The multi-dimensional training our students receive enables them to become proficient, skilled, confident, resourceful and result-oriented professionals who can excel in leadership roles in today's highly competitive environment.

### Admission Requirement

- FA/F.Sc Part-I with minimum 60% marks OR A-level in three main subjects (no subsidiary) with minimum

Grade B (60%) with Equivalence Certificate OR Grade 12 with minimum Grade B (60%) with Equivalence Certificate.

- Candidates must appear for an Interview.

## BS Economics

BS in Economics at Kinnaird College is one of the most sought after undergraduate degrees in the discipline of Economics. It is a comprehensive degree that trains students in qualitative, quantitative and analytical skills. Degree in Economics broadens the horizon and efficaciously prepares students for multiple options for post-graduate studies. Our graduates successfully secure admissions in well reputed local and foreign universities for post-graduate degrees. Furthermore, their analytical acumen and flexibility equip them with an impressive skillset that makes them an attractive choice for a wide range of employers in both private and government sectors.

The Department of Economics is devoted to restructuring its coursework with time in order to incorporate the dynamic, contemporary economic spectrum in its curriculum. Also, it is committed to organizing seminars and workshops to keep the students updated on the latest trends and robust changes in the field of economics. The Department offers an enabling learning environment based on interactive teaching, mentorship and linkages with other institutions and market. The premium is placed on students' wellbeing and development as well rounded and responsible economic professionals and scholars.

### Admission Requirement

- FA/F.Sc Part-I with minimum 60% marks OR A-level in three main subjects (no subsidiary) with minimum Grade B (60%) with Equivalence Certificate OR Grade 12 with minimum Grade B (60%) with Equivalence Certificate.
- Candidates must appear for an Interview.

## BS International Relations

The Bachelor in International Relations (IR) is an interdisciplinary undergraduate major focusing on the changing political, economic and socio-cultural relations within the international system of the modern era. The program explores how global, regional, and domestic factors

influence relations between actors on the world stage. It seeks to provide students with an understanding of the global system's past, the tools to function effectively in the present, and the ability to respond to future developments.

### Admission Requirement

- FA/F.Sc Part-I with minimum 60% marks OR A-level in three main subjects (no subsidiary) with minimum Grade B (60%) with Equivalence Certificate OR Grade 12 with minimum Grade B (60%) with Equivalence Certificate
- Candidates must appear for an Interview.



## Bachelor of Laws

In response to the growing popularity of legal studies and the significant career opportunities the profession offers, Kinnaird College felt a compelling need to introduce a Bachelor's level law program, specifically tailored for young women. This initiative underscores the College's commitment to empowering female students in a field that offers vast potential. This LL.B (Hons) program is a comprehensive four-year degree program designed to provide students with a challenging and rigorous interdisciplinary education in law and its associated fields. While the focal point of the curriculum is the Pakistani legal system, it employs a critical and comparative teaching approach to broaden student perspectives and sharpen their analytical skills. The Nadira Hassan Law Department offers an extensive curriculum that focuses on skill development in areas such as legal writing, drafting, advocacy, and legal argumentation. Notably, Kinnaird holds the distinction of being the first women-only law college in Punjab, offering intensive legal study and research opportunities.

### Admission Requirement

- Completion of FA/F.Sc Part-I with minimum 60% marks OR A-level in three main subjects (excluding subsidiaries) with minimum Grade B (60%) with Equivalence Certificate OR Grade 12 with minimum Grade B (60%) with Equivalence Certificate.
- Candidates must appear for an interview.

**Note:** Applicants are required to pass the Law Admission Test (LAT) conducted by the Higher Education Commission (HEC) with minimum 50% marks prior to the closing date of registration.

**Quota:** In addition to Kinnaird College's admission policy on reserved seats, 5% of seats have been reserved for the daughters of Advocates, who shall compete for admission in order of merit inter se. Eligibility for these seats is subject to the candidate furnishing the relevant details, including a copy of their Advocate-parent's license, as part of their admission application. Candidates who fail to submit this information will not be considered for these reserved seats..

## Degree Requirements

The LL.B (Hons) program is a 4-year program which spans over 8 regular semesters. To be awarded the LL.B (Hons) degree, students must complete 148 credit hours and achieve a minimum CGPA of 2.50.

## BS Political Science

The Bachelors Program in Political Science considers the subject from a political, philosophical and historical point of view. It emphasizes the importance of political thought in the past in shaping the ideas and circumstances that affect national and international politics. It facilitates students in understanding constitutions and the rule of law, government, distributive justice, public interest groups, human rights, the economy and economic development from a political point of view and the politics of the environment. Emphasis is placed on the study of conflict and conflict resolution and defense and diplomatic studies. Students are also facilitated in undertaking a critical analysis of the dynamics of local, regional and international politics.

### Admission Requirement

- FA/F.Sc Part-I with minimum 60% marks OR A-level in three main subjects (no subsidiary) with minimum Grade B (60%) with Equivalence Certificate OR Grade 12 with minimum Grade B (60%) with Equivalence Certificate
- Candidates must appear for an Interview.

## BS Physical Education

The 4-year BS Physical Education consists of 134 Credit Hours aims to foster both theoretical and practical understanding of sports physiology, sports psychology, sports management, physical fitness, and health, alongside skill acquisition. This comprehensive curriculum equips students with insights into the factors influencing human performance. Upon completion of the four-year BS Physical Education Program, graduates will possess the ability to integrate a broad and cohesive theoretical and technical knowledge of health, physical education, and exercise with advanced expertise. Employment opportunities for graduates many include roles

as professional coaches, sports directors, exercise specialists, and sports development officers in both urban and regional setting.

### Admission Requirement

- FA/F.Sc Part-I with minimum 50% marks OR A-level in three main subjects (no subsidiary) with minimum Grade C (50%) with Equivalence Certificate OR Grade 12 with minimum Grade C (50%) with Equivalence Certificate
- Candidates must appear for an Interview.



## How to Apply for Admission

All admissions to Kinnaird College for Women are based on merit. Previous academic performances are taken into account for admission on “open merit” and also for any category within “reserved seats”. A separate form must be used for each category and the chosen option clearly indicated on each admission form. Applicants must ensure all relevant documents listed in the forms are attached.

## Reserved Seats Quota

In accordance with the admission policy limited seats are reserved for the following categories:

1. Uniquely abled Persons
2. Religious Minority seats
3. Provincial seats
4. Balochistan
5. Sports

**01**

### Uniquely abled Persons

Applicants for admission in this category must submit disability certificate, medical reports and other relevant documents.

**02**

### Religious Minority Seats

Applicants for admission on religious minority seats such as Christians, Hindus, Sikh, Ahmedis and Parsis must provide supporting documents.

**03**

### Provincial Seats

Applicants for admission on Provincial seats must have obtained their schooling and passed the board examination from the province of their domicile. They must submit their nominations through the provincial government of their domicile.

**04**

### Balochistan

Applicants for admission on Balochistan seats must have obtained their schooling and passed the board examination from the province of their domicile. They must submit their nominations through the provincial government of their domicile.

**05**

### Sports

Applicants applying for admission on sports seats must attach their certificates of participation and awards won at intercollegiate, district, provincial and national sports events. Students will also be required to demonstrate on the field.

### Important Note:

- Applicants with more than 45% marks are eligible to apply for reserve seats. Merit will be determined for reserved seats within their category.
- Admissions on the basis of these categories will not be changed till the completion of the degree.
- The decision of the Admission Committee is final and cannot be challenged.
- Applicants can apply for admission in more than one category.
- A separate form must be submitted for each category being applied for.
- If on verification any document is found to be fake or forged admission will be cancelled.



# KINNAIRD CORE CURRICULUM

All students enrolled in undergraduate programs are required to complete the Kinnaird Core Curriculum (KCC). This carefully structured academic component is designed to cultivate well-rounded, confident, and socially responsible graduates. The KCC consists of 8 credit hours, with a 2-credit-hour course offered in each year of study. Through an interdisciplinary approach, the curriculum provides students with the knowledge, skills, and values necessary for personal growth, professional success, and meaningful engagement with society beyond the classroom.

YEAR

1

## Character Development and Cultural Identity with National & Regional Languages

(2 credit hours)

This course emphasizes character development through the study of cultural values, traditions, and historical narratives. It is designed to explore the role of national and regional languages and cultures in shaping individual and collective identities.



YEAR

2

## Mental and Physical Wellbeing with Sports

(2 credit hours)

This course helps students understand mental wellbeing through psychology, focusing on emotional resilience, stress management, and positive thinking. It includes benefits of physical activity and sports in promoting holistic mental and physical health.



BUILDING CHARACTER, CULTURE & CONFIDENCE

# Kinnaird Core Curriculum

YEAR

3

## Foreign Language and Creative Arts

(2 credit hours)

This course introduces students to foreign languages (Arabic, Persian, German, Mandarin, French, Spanish) and creative arts such as painting, sculpture, musical instruments, singing, script writing, drama etc. It fosters self-expression, creativity, confidence, and appreciation of arts.



YEAR

4

## Legal Consciousness and Life Skills

(2 credit hours)

This course develops legal awareness and essential life skills. It helps students understand basic rights, laws, driving, etiquette, budgeting, and ethical decision-making for practical life.



EMPOWERING EXPRESSION, AWARENESS & LIFE SKILLS

## Degree Requirements for Undergraduate Programs

To receive a BS / BCS / BBA / B.Ed. degree, a student must complete a minimum of 128 credit hours and maximum of 148 credit hours with a minimum CGPA of 2.50

Students are required to fulfill the following course requirements during the 8 semesters:

Courses	Credit Hours
<b>General Education</b>	
Arts & Humanities/KCC-I	2
Natural Sciences	3
Social Sciences/KCC-II	2
Functional English	3
Expository Writing	3
Quantitative Reasoning	6
Islamic Studies / Christian Ethics	2
Ideology & Constitution of Pakistan	2
Application of Info & Communication	3
Entrepreneurship	2
Civics & Community Engagement	2
Pakistan Studies	2
Understanding of Holy Quran / Bible	2
<b>Total (General Education)</b>	<b>34</b>
KCC III & IV	4
<b>Interdisciplinary / Allied Courses</b>	<b>12</b>
<b>Major Courses</b>	<b>72-91</b>
<b>Minor (Optional)</b>	<b>12</b>
Field Experience / Internship	3
Capstone Project / Research Report*	3-6
<b>Total</b>	<b>128-148</b>

The course requirements for a BFA / BD degree may vary.

\*NO STUDENT will be allowed to commence her capstone project / research work without completing at least 85 credit hours of course work with a minimum CGPA of 2.50.

### Academic Awards

Kinnaird College for Women awards degree with Honors to a few students in each graduating class. The criteria for graduation with Honors are as follows:

### Gold Medals

Students with the highest CGPA in their faculty are awarded gold medals provided they complete their Bachelors degree without any break from the time of their registration in the first semester and do not improve or repeat any course.

### Principal's Honor List

Students with CGPA of 3.90 or above are placed on the Principal's Honor List.

### Merit List

Students with CGPA of 3.80 or above are placed on the Merit List.

### Active Citizenship Program

Active Citizenship program offered by Kinnaird College in collaboration with British Council and HEC is a social leadership training program that promotes intercultural dialogue and community-led social development. It is a mandatory requirement for the completion of undergraduate degree and based on two semesters. All students will study the theoretical portion through different activities starting in their 3rd semester. They will plan their social action projects in 4th semester and implement it in the field.





## Minor Courses

Market-oriented minors are offered as part of the curriculum to strengthen the academic portfolio of BS programs and align students' learning with evolving market demands. These minors are designed to equip students with essential skills and competencies that support their professional aspirations. A list of the minors available is provided below.

- Accounting
- Agronomy
- Applications of Artificial Intelligence
- Applied Linguistics
- Artificial Intelligence
- Bioinformatics
- Botany
- Climate Change
- Clinical Psychology
- Constitutional Law
- Corporate Environmental Management
- Data Analytics
- Data Science
- Developmental Psychology
- Education
- Environmental Sciences
- Finance
- Food & Nutrition
- Forestry
- Gender Psychology
- Genetics
- Geography
- Global Sustainable Practices
- Health & Clinical Biochemistry
- Horticulture
- Industrial Chemistry
- International Development & Sustainability
- International Law
- International Trade & Business

- Marketing Essentials
- Molecular & Genetic Engineering
- Philosophy
- Sports Management
- Sports, Media & Communication
- Women Health & Diseases

According to the Undergraduate Education Policy, the students enrolled in undergraduate programs can register for 15-18 credit hours each semester and up to a maximum of 21 credit hours in exceptional cases where a program has specific requirements. The total number of credit hours required to complete an undergraduate degree program with a single major is 128 - 148 credit hours. A minor is an optional and secondary concentration of courses that complements a student's major and enhances their field of study. The respective departments offering minors will be responsible for the offered minors' prerequisites, course structures, and eligibility criteria. The respective head of the departments will facilitate their students in course selection, timetable scheduling, and other requirements, considering their semester workload. A minor must not be less than a minimum of 12 credit hours as per the guidelines.



# Fee Structure for Undergraduate Programs

DUES FOR YEAR 2026-27 (Pak Rupees) Fall and Spring Semester Only

	BS/B.Ed. Without Practical	BS/BFA/BD With Practical	BBA / Acct. & Finance / LLB	BSCS
Tuition Fee (Rs.)	153,100	165,100	181,000	181,000
Funds (Rs.)	44,900	44,900	44,900	44,900
Practical Subject Fee (Rs.)	-	2,000	-	10,000
Total	198,000	212,000	225,900	235,900

Funds at the Time of Admission	
Admission Fee	12,000
Registration Fee	2,000
Library Security (Refundable)	15,000
Endowment Fund	7,800
Total	36,800

Annual Funds	
Examination Fee	2,000
General Funds	1,840
Building Funds	2,700
Academic Development Fund	1,500
Red Crescent Fund	60
Total	8100
Total Funds	44,900

## Fee for Foreign Students

The Tuition Fee for foreign students is \$2000 or equivalent to Pak rupees on the date of payment plus college funds. Fee is not subject to installments. Foreign Students admitted to the BBA, Accounting & Finance, LLB and BCS program will pay an additional \$300 towards tuition fee.

## Important Notes

- Fee once paid is refunded only as per HEC National Fee Refund Policy 2024 for all students, including those who are admitted on result-awaiting basis.
- A fine of Rs. 25 per day will be charged if fee is not deposited within the scheduled dates. No fine waivers are available in any case.
- In addition to fee, students will pay research project fee in the 3rd & 4th year as detail below:  
Major without practical      Rs. 2000  
Major with practical      Rs. 5000
- Students opting to take Summer Courses will have to pay the course fee of Rs. 4,000 for each course of BS/BFA/BD/B.Ed. For BBA, Accounting & Finance, LLB and BCS courses the fee will be Rs. 6000/-
- Fee for repeat of a course is Rs. 4000/- for BS/BFA/BD/B.Ed. programs and Rs. 6000/- for BBA, Accounting & Finance, LLB and BCS program.

## Student Financial Aid and Scholarships

There is a list of scholarships on need and merit basis available for students to cater their educational expenses, such as, HEC Need Based Scholarship, Benazir Undergraduate Scholarship Program, CM Honhaar Undergraduate Scholarship Program and Kinnaird College Associates USA Scholarship. In addition to the above, a Financial Aid Committee is also established by the College for the evaluation and approval of the applications submitted by the students for financial aid.

You can visit <https://www.kinnaird.edu.pk/scholarships> for further details.

# MS / MPhil PROGRAMS

- M.Phil Accounting & Finance
- M.Phil Applied Linguistics
- M.Phil Biochemistry
- M.Phil Biotechnology
- M.Phil Business Administration
- M.Phil Chemistry
- MS Clinical Psychology
- MS Computer Science
- M.Phil Education
- M.Phil English Literature
- M.Phil Environmental Sciences
- M.Phil Food Science & Human Nutrition
- M.Phil International Relations
- M.Phil Media Studies
- M.Phil Molecular Biology & Genetics
- M.Phil Political Science
- M.Phil Statistics
- M.Phil Urdu



### M.Phil Accounting & Finance

The M.Phil in Accounting & Finance offers an intensive blend of advanced study and research for students aiming to deepen their expertise in Finance, Accounting, Commerce, and Banking, making it ideal for Ph.D. candidates. It provides a robust academic foundation vital for careers in accounting and finance while acknowledging the importance of the corporate sector. Through collaborative workshops, seminars, and research symposiums with industry leaders, students gain invaluable insights into evolving financial market needs. Engaging with industry partners fosters a comprehensive understanding of corporate finance dynamics, enriching both academic and professional readiness. Whether pursuing further academic pursuits or entering the financial sector, this program ensures students are well-equipped for success.

#### Admission Requirement

- 04 years BA/B.Sc. (Hons) with a minimum CGPA of 2.50 OR 60% marks in Masters. The applicants must have done their Graduation / Masters in Accounting & Finance, B.Com, BBA or Banking and Finance.
- All candidates must appear for KC Graduate Assessment Test.
- Only short listed candidates will be called for the Interview.

### M.Phil Applied Linguistics

MPhil Applied Linguistics at Kinnaird College for Women comprises eight major courses, each worth 3 credit hours. The diverse field of subjects includes major courses such as Emerging Trends in Applied Linguistics, Phonetics & Phonology, Forensic Linguistics, Semantic & Pragmatics, Advanced Research Methods & Academic Writing, Educational Leadership & Management, Curriculum Design & ESP, and Computer Assisted Discourse Studies. These courses are based on qualitative and quantitative research methods, which help them get prepared for research and thesis writing. With an MPhil in Applied Linguistics at Kinnaird, students can pursue a wide range of employment opportunities and become competent leaders through a variety of learning experiences.

#### Admission Requirement

- 04 years BA/B.Sc. (Hons) with a minimum CGPA of 2.50 OR 60% marks in Masters. The applicants must have done their BS in Applied Linguistics/English Language and Literature Masters in Applied Linguistics, English

Literature and ELT.

- All candidates must appear for KC Graduate Assessment Test.
- Only short listed candidates will be called for the Interview.

### M.Phil Biochemistry

Biochemistry is the field of science which has revolutionized the field of life sciences and medicine. Biochemistry has great importance in present time as it deals with the study of biochemical processes taking place in living organisms, structure of cellular components and their biomedical importance, enzymes, hormones, diseases and drugs. The program develops in depth theoretical and practical knowledge of advance topics of Biochemistry and its allied areas. The students will be able to critically analyze the case studies / scenarios and apply the biochemistry knowledge in solving problems.

#### Admission Requirement

- 04 years B.Sc. (Hons) with a minimum CGPA of 2.50 in degree OR 60% marks in Masters. The applicants must have done their Graduation / Masters in Biochemistry, Biotechnology, Molecular Biology, Microbiology, and Chemistry with specialization in Biochemistry.
- All candidates must appear for the KC Graduate Assessment Test.
- Only short listed candidates will called for the Interview.

### M.Phil Biotechnology

Biotechnology is a futuristic and highly interdisciplinary field that combines Biological Sciences with engineering technologies to produce products that advances healthcare, medicine, agriculture, food pharmaceuticals and environment control. The scope of Biotechnology is increasing with more and more basic and applied research endeavors in major areas such as health and medicine, agriculture, industry and environment. The union of biotechnology with recombinant DNA technology (genetic engineering) has developed a new field called Molecular Biotechnology. This new science focuses on development of modified or new products, ultimately, leading to commercialization of these products, which can be used for human welfare. Many plant and animal products, which were not affordable to common people few years ago, are now available in some parts of the world due to decrease in prices and acceleration of their production. The M.Phil program in Biotechnology will empower women to become high quality scholars and professionals who

would serve effectively and efficiently in academia and other relevant organizations / companies through equipping its graduates with quality education alongside necessary analytical and research skills in the selective specialized areas of Biotechnology.

#### Admission Requirement

- 04 years B.Sc. (Hons) majoring in Biotechnology or any other related discipline of Biological Sciences with a minimum CGPA of 2.50 OR 60% in Masters.
- All candidates must appear for the KC Graduate Assessment Test.
- Only short listed candidates will be called for the Interview.

### M.Phil Business Administration

The M.Phil degree in Business Administration is geared towards those students and professionals whose goal is to enhance their knowledge and skill-set in response to the needs of the changing business environment. It offers specializations in Human Resource Management, Marketing & Brand Management.

The global corporate world has seen many Kinnaird business graduates occupying top slots in the corporate ladder. Our M.Phil program opens multiple opportunities in the corporate sector as well as the academia. Business graduates can opt to work in multinational corporations, banks, service sector, co-operatives and NGOs etc. or decide to setup their own business. The opportunities available are unlimited. Research is the cornerstone of the program that helps create the link between academia and industry.

#### Admission Requirement

- 4 years BBA/B.COM (Hons) with minimum CGPA of 2.50 OR 60% marks in Masters..
- All candidates must appear for the KC Graduate Assessment Test. The KC Graduate Assessment tests the applicants' basic concepts about business, research orientation, general knowledge, critical thinking and writing skills.
- Only those applicants who qualify the KC General Assessment Test will be short listed and called for the interview.



### M.Phil Chemistry

With over two decades of leadership in advancing chemical sciences, Chemistry Department stands as a beacon of excellence in undergraduate education and research. The M.Phil in Chemistry program is designed for passionate and inquisitive minds eager to deepen their understanding of the molecular world. This rigorous two-year program offers advanced theoretical knowledge, hands-on laboratory experience, and excellent research opportunities in diverse fields such as Organic Synthesis, Analytical Chemistry, and Applied Chemistry. Our accomplished faculty, well-equipped laboratories, and collaborative research environment ensure that students are prepared to contribute meaningfully to scientific innovation and industrial advancement. Graduates of our M.Phil program will excel in academia, research institutions, pharmaceuticals, and environmental agencies, or to pursue a Ph.D. Join us in shaping the future of science through curiosity, creativity, and critical thinking. Let your M.Phil journey begin where excellence meets opportunity.

#### Admission Requirement

- 04 years BA/B.Sc (Hons) with a minimum CGPA of 2.50 OR 60% marks in Masters. The applicants must have done their BS in Chemistry
- All candidates must appear for KC Graduate Assessment Test
- Only short listed candidates will be called for the Interview

### MS Clinical Psychology

The MS in Clinical Psychology aims to prepare clinical psychologist to work in the area of mental health in clinical settings. The goal of the program is to train skilled and effective clinical psychologist who are well versed in the ethics of the profession. The program offers courses to enhance the knowledge and understanding of psychopathology, diagnosis and therapeutics interventions for both children and adults. Furthermore, students will develop understanding the impact of the cultural, social and environmental factors that affect the mental health wellbeing. In addition to the course work students are required to attend seminars, workshops, lectures and discussion forums arrange by the department. Students are required to do their internship in clinical settings for both adults and child psychology and complete research project in the domain of clinical psychology.

### Admission Requirement

- 04 years BA/B.Sc. (Hons) with a minimum CGPA of 2.50 OR 60% marks in Masters. The applicants should have done their Graduation/Masters in Psychology.
- All candidates must appear for the KC Graduate Assessment Test.
- Only short listed candidates will be called for the Interview.

### MS Computer Science

In the last three decades, computers have entered all spheres of our lives from business applications, office automation, science and engineering, expert systems, information and data processing, to shopping in grocery stores. Given the unprecedented pace at which developments are taking place there is a demand today for advanced training and education in Computer Science. The two-year MS Computer Science program prepares students to understand the diverse and ever-evolving field of Computer Science. It enables students to conduct research, to develop their capacity for inquiry, abstract and logical thinking, and critical analysis. Students are exposed to quality work being done in areas including Machine Learning, Networks Information Security, Software Engineering, Natural Language Processing, Data Mining, Human Computer Interaction, and Artificial Intelligence.

#### Admission Requirement

- 04 years BA/B.Sc. (Hons) with a minimum CGPA of 2.50 OR 60% marks in Masters after 02 years BA/ B.Sc. The applicants should have done their Graduation/Masters in Computer Science, Software Engineering, Information Technology or any Engineering discipline.
- All candidates must appear for the KC Graduate Assessment test.
- Only shortlisted candidates are called for an interview.

### M.Phil Education

The Accredited in the W Category, the M.Phil in Education program at Kinnaird College for Women reflects the highest standards of academic excellence in advanced studies in education. The aim of the program's curriculum is to enhance a deeper understanding of the field of education as well as develop the skills and capabilities that are required to succeed in the field of teaching. It will also focus on cultivating research that will contribute to discipline and add to the existing body of knowledge. This program is designed for individuals who plan to enter the field of education, as well as for those individuals who are already working in the field and have a desire to enhance their knowledge

and strengthen their research skills. It invites learners who are excited about challenges to further develop their critical thinking, excel in their own learning, and contribute to the field through the development of a new body of knowledge through research.

#### Admission Requirement

- 04 years B.Ed. (Hons) with a minimum CGPA of 2.50 OR 60% marks in Masters. The applicants should have done their Graduation/Masters in Education /TESOL/ ELT.
- All candidates must appear for the KC Graduate Assessment Test.
- Only short listed candidates will be called for the Interview.

### M.Phil English Literature

The M.Phil in English Literature at Kinnaird is a 2 year course designed particularly for students wishing to take up literature as a research oriented discipline with an intensive focus on literary texts in their historical and intellectual contexts, as seen in both generic and chronological perspectives. The course is cumulative and self-contained, and involves rigorous research work leading to a dissertation on a topic that interests the student.

#### Admission Requirement

- 04 years BA/B.Sc. (Hons) with a minimum CGPA of 2.50 OR 60% marks in Masters. The applicants should have done their Graduation/Masters in English Literature.
- All candidates must appear for the KC Graduate Assessment Test.
- Only short listed candidates will be called for the Interview.

### M.Phil Environmental Sciences

The MPhil in Environmental Sciences is a dynamic program which focuses on current issues of environment and their solutions. The program aims to train and produce graduates who will have broad appreciation of all aspects of environment and are equipped to analyze and address the increasing environmental and developmental challenges. The program is designed to provide graduates with an advance level of understanding of environment and environmental related issues. It is strongly aligned with several Sustainable Development Goals and facilitates students to develop knowledge and skills to formulate and implement solutions to problems of sustainable development. The program will

enable the students to apply theoretical understanding, professional judgment and practical skills in their professional practice in environmental field. The department offers research in various fields for which well established and well equipped research facilities are available.

There are numerous career opportunities for graduating students, both in public and private sector. Students who successfully complete the program can pursue their careers in academia, international organizations, industries, environmental consultancies and NGOs, research organizations and government entities such as Environment Protection Department, Urban unit, Solid waste management department and Ministry of climate change etc.

#### Admission Requirement

- 04 years BS with a minimum CGPA of 2.50 OR 60% marks in Masters after 02 years BSc. The applicants should have done their Graduation/Masters in Environmental Sciences, Environmental Engineering, Pure Sciences, Geography and any other relevant field.
- Applicants must have done Intermediate with Science.
- All candidates must appear for the KC Graduate Assessment Test.
- Only short listed candidates will be called for the Interview.



### M.Phil Food Science & Human Nutrition

This research base program focuses on various aspects of food science as related to human nutrition. This program aims at integrating knowledge from the natural, social and behavioral sciences as it applies to food and nutrition. This platform is an opportunity for individuals already working in various food and nutrition fields to enhance their nutritional knowledge and practically apply it to their field of specialization.

This dynamic program helps students apply their knowledge of Food Science in the development of innovative food products and also emphasizes on the application of food and diet in prevention and treatment of disease both at an individual and community level. Thus, the unique combination of Medical Nutrition Therapy and innovative functional and health foods enables the students to work in various fields ranging from research in the food science laboratory to performing their duties in the medical and ICU wards of the hospitals or working as a nutritionist in the community for improving the health of the most vulnerable sector of the population.

#### Admission Requirement

- 04 years B.Sc. (Hons) with a minimum CGPA of 2.50 OR 60% marks in Masters. The applicants should have done their Graduation in Food Science & Human Nutrition, Home Economics (Food & Nutrition).
- All candidates must appear for KC Graduate Assessment Test.
- Only short listed candidates will be called for the Interview.

### M.Phil International Relations

The M.Phil in International Relations is a research oriented program which is designed to meet the needs of all those who wish to enhance their understanding of the subject. The program recognizes the changing nature of the contemporary political, economic and socio-cultural environment and seeks to lay an interdisciplinary basis for understanding these changes. International Relations is a growing and ever-evolving field and highly skilled professionals are in high demand. M.Phil International Relations program can help equip students with the skills to work on a global scale.

#### Admission Requirement

- 04 years BA/B.Sc. (Hons) with a minimum CGPA of 2.50 in degree OR 60% marks in Masters.
- All candidates must appear for the KC Graduate Assessment Test.

- Only short listed candidates will be called for the Interview.

### M.Phil Media Studies

This degree course is a highly rigorous and wide-ranging program for those students who are confident of their ability to become a successful part of the media industry. The program is highly practice-oriented and provides hands-on training to students in areas of their interest. It offers a solid foundation in all aspects of the media business, with research work and special projects; all with the aim to put our students at the top of the media scene once they step out in the real world.

#### Admission Requirement

- 04 years BA/B.Sc. (Hons) with a minimum CGPA of 2.50 OR 60% marks in Masters. The applicants should have done their Graduation/Masters in Media Studies.
- All candidates must appear for the KC Graduate Assessment Test.
- Only short listed candidates will be called for the Interview.

### M.Phil Molecular Biology and Genetics

Molecular Biology and Genetics, although distinct fields in themselves but are closely related with a lot of overlapping concepts and techniques that are applied in different areas of science. The scope of Molecular Biology and Genetics in transforming theoretical principles into a multibillion-dollar bioeconomy centered on precision medicine and synthetic biology. This satisfies the need for a comprehensive understanding of emerging trends by moving beyond traditional lab work into the engineering of DNA. This field of science deals with structure, functions and interaction of macromolecules such as nucleic acids and proteins in living organisms. Genetic manipulation using recombinant DNA technology has been harnessed for modifying characteristics in various plant and animal species. The field of Molecular Biology and Genetics is gaining extreme spotlight with the development of more sophisticated experimental techniques such as next generation sequencing, recombinant DNA technology, continuously updated genomic databases, a plethora of gene expression studies, and is becoming increasingly popular owing to its broad interdisciplinary applicability. This M.Phil program will promote lifelong learning and a commitment to professional development in this rapidly evolving field and also inculcate strong social and scientific ethics and values enabling them to become not only good scientists but good citizens and positively contributing members of society.

### Admission Requirement

- 04 years B.Sc. (Hons) majoring in Genetics, Biotechnology or any other related discipline of Biological Sciences with a minimum CGPA of 2.50 OR 60% in Masters.
- All candidates must appear for the KC Graduate Assessment Test.
- Only short listed candidates will be called for the Interview.

### M.Phil Political Science

The aim of the M.Phil Political Science program is to prepare students for roles in sectors of academia, research, legislation, mass-media, non-governmental agencies and public policy by inculcating knowledge of political processes and skills. The degree emphasizes the researched study of government and political institutions from area-specific and comparative perspectives, and provides a range of educational experiences in a variety of learning environments to develop written and oral communication skills as well as other technical skills. It provides solid foundation for a wide range of careers including academia, media, civil society, diplomatic and governmental positions.

#### Admission Requirement

- 04 years BA/B.Sc. (Hons) with a minimum CGPA of 2.50 in degree OR 60% marks in Masters.
- All candidates must appear for the KC Graduate Assessment Test.
- Only short listed candidates will be called for the Interview.

### M.Phil Statistics

The two-year M.Phil Statistics program at Kinnaird College will provide the students a sound understanding in the theory and applications of statistics. The M.Phil involves a combination of course work and research training and is designed to extend the competence of candidates. The program offers a range of courses and will provide the quantitative skills and expertise required to carry out various types of statistical analyses. Students acquire the skills necessary to undertake applied and/or theoretical projects and the ability to communicate the results of their work to wider audiences. The mainstream statistical theory will be supplemented by studies in specialized areas such as Quality Control and Reliability Theory. Students may choose to specialize in any of a

number of areas including Quality Control, Mathematical Statistics, Advanced Sampling Techniques and Reliability Theory. The structure and content of the courses within the program focus on the skills and techniques that are relevant and applicable.

#### Admission Requirement

- 04 years BA/B.Sc. (Hons) with a minimum CGPA of 2.50 OR 60% marks in Masters. The applicants should have done their Graduation/ Masters in Statistics, Mathematics.
- All candidates must appear for the KC Graduate Assessment Test.
- Only short listed candidates will be called for the Interview.

### M.Phil Urdu

This The Postgraduate program in Urdu at Kinnaird College is offering a two year M.PHIL degree. The curriculum of the program aims to enhance deeper understanding of research, arts and literature in the field of Urdu as well as development of skills and capabilities required to succeed in the field. The program also focuses on research that will contribute to the discipline and further add to the existing body of knowledge. The program invites learner who are excited about challenges to further develop their critical thinking, excel in their own learning as well as contribute to the field by their research work.

#### Admission Requirement

- 04 years BA/B.Sc. (Hons) with a minimum CGPA of 2.50 OR 60% marks in Masters. The applicants should have done their Graduation/ Masters in Urdu Literature.
- All candidates must appear for the KC Graduate Assessment Test.
- Only short listed candidates will be called for the Interview.



## Degree Requirements for MS/M.Phil program

The 02 years MS/M.Phil degree program divided into four semesters: Fall & Spring every year. The duration of each semester is 16 – 18 weeks.

### Course Work

Most courses are 3 credit hours. Each 3 credit hour course involves 48 contact hours with the teacher in the classroom, plus 144 hours of self-study which includes reading book chapters or journal articles, doing assignments or projects and preparation for tests and examinations.

### Research Thesis

An M.Phil candidate who has completed her course work with a minimum CGPA of 3.00 must present and pass the oral proposal defense examination before she is allowed to carry out her Masters research. On passing the thesis proposal defense the student must carry out a research study which is described in a thesis. She must successfully defend the completed work in an oral examination involving a presentation and question answer session in the presence of an external examiner.

### Degree Requirements

To receive MS/M.Phil degree (except MS Computer Sciences) students must complete 24 credit hours of course work with a minimum CGPA of 3.0 and successfully defend a research thesis equivalent to 6 credit hours.

The MS Computer Science degree requires students to complete a minimum of 30 credit hours in two years. A student has the option to pursue MS by undertaking either a 6 credit hour thesis or a three credit hour taught course and a three credit hours project.

### Time Limit for degree completion

02 years MS/M.Phil degree must be completed within 3-years from the commencement of the program. If degree requirements are not completed within this time, the student will not be awarded a degree.

### Important Note

If a student does not complete requirements for her degree in two years then she would be charged Rs. 10000/- per semester till she completes her degree (no longer than 3 years from the date of starting of program).



## Fee Structure for MS/M.Phil Programs

### For Applied Linguistics, Education, English Literature, Environmental Sciences, International Relations, Media Studies, Political Science, Statistics & Urdu

Registration Fee	Rs. 15,000
Research Fund	Rs. 5,000
Per Course Fee	Rs. 25,500
Research Thesis	Rs. 30,000

### For Accounting & Finance, Biochemistry, Biotechnology, Molecular Biology & Genetics, Business Administration, Chemistry, Clinical Psychology, Computer Science and Food Science & Human Nutrition

Registration Fee	Rs. 15,000
Research Fund	Rs. 15,000
Per Course Fee	Rs. 29,500
Research Thesis	Rs. 30,000

### Please Note:

- Fee once paid is refunded only as per HEC refund policy for all students including those who are admitted on result awaiting basis.
- A fine of Rs. 25 per day will be charged if fee is not deposited within the scheduled dates. No fine waivers are available in any case.
- For MS Clinical Psychology and M.Phil Food Science & Human Nutrition, students are required to pay the internship/placement fee directly to the organization assigned by the respective department, in addition to the program fee.

### Student Financial Aid and Scholarships

There is a list of scholarships on need and merit basis available for students to cater their educational expenses. In addition to the above, a Financial Aid Committee is also established by the College for the evaluation and approval of the applications submitted by the students for financial aid.

You can visit <https://kinnaird.edu.pk/scholarships/> for further details.

# PhD PROGRAMS

- PhD Biotechnology
- PhD English Literature
- PhD International Relations
- PhD Food Science & Human Nutrition



## Degree Requirements for PhD program

### PhD Biotechnology

#### Admission Requirement

- M.Phil degree in Biotechnology or a closely related field of natural sciences (i.e. Molecular Biology, Microbiology, Genetics, Botany, Zoology, Biochemistry, or Chemistry, etc.) with a minimum CGPA of 3.0 out of 4.00 in the semester system or equivalent to 60% marks in the annual examination system.
- GRE General / HEC HAT General with a minimum score of 60% OR HEC HAT General type test conducted by Kinnaird College with a minimum score of 60%.
- Subject-Specific test with a minimum score of 60%.
- Successful qualification in the Departmental Admission Interview.

### PhD English Literature

#### Admission Requirement

- M.Phil degree in English Literature or a closely related field from the Arts & Humanities, from an HEC-accredited institution with a minimum CGPA of 3.0 out of 4.00 in the semester system or equivalent to 60% marks in the annual examination system.
- GRE General / HEC HAT General with a minimum score of 60% OR HEC HAT General type test conducted by Kinnaird College with a minimum score of 60%.
  - Subject-Specific test with a minimum score of 60%.
  - Successful qualification in the Departmental Admission Interview.
  - Research capability demonstrated through previous academic work.

### PhD Food Science & Human Nutrition

#### Admission Requirement

- M.Phil / MS degree in the field of Food Sciences, Nutrition, or a related subject of natural sciences with a minimum Cumulative Grade Point Average (CGPA) of 3.0 out of 4.00 in the semester system or equivalent to

- 60% marks in the annual examination system.
- GRE General / HEC HAT General with a minimum score of 60% OR HEC HAT General type test conducted by Kinnaird College with a minimum score of 60%.
- Subject-Specific test with a minimum score of 60%
- Successful qualification in the Departmental Admission Interview.

### PhD International Relations

#### Admission Requirement

- M.Phil degree in International Relations or a closely related field of social sciences (i.e Defense and Strategic Studies, Peace and Conflict, Terrorism and Counter-Terrorism, Political Science, History, Media Studies, Gender Studies, and Sociology etc.) from an HEC-accredited institution with a minimum CGPA of 3.0 out of 4.00 in the semester system or equivalent to 60% marks in the annual examination system.
- GRE General / HEC HAT General with a minimum score of 60% OR HEC HAT General type test conducted by Kinnaird College with a minimum score of 60%.
- Subject-Specific test with a minimum score of 60%.
- Successful qualification in the Departmental Admission Interview.



## Fee Structure for PhD Programs

### For Biotechnology, English Literature, International Relations, and Food Science & Human Nutrition

Program Name	Total Course Work	1st Sem	2nd Sem	Semester Fee (from semester 3 onward)	Final Dissertation	Total 3 Years
Food Science	210,000	145,000	105,000	100,000	150,000	800,000
Biotechnology	210,000	145,000	105,000	100,000	150,000	800,000
International Relations	210,000	145,000	105,000	70,000	150,000	800,000
English Literature	210,000	145,000	105,000	70,000	150,000	800,000

- **Admission Fee:** Rs. 20,000/-
- **Library Security Fee:** Rs. 20,000/-
- **Course Load:** Course work of the PhD programs comprises six courses.
- **Course Fee:** Rs. 35,000/- per course.
- **Fee Refund Policy:** Any fee paid shall be refunded only in accordance with the applicable HEC refund policy.
- **Semester Freeze Fee:** Students opting to freeze a semester must pay a fee of Rs. 20,000/- per frozen semester to maintain their registration with the college.
- **Continuation Fee Requirement:** From the third semester onwards, students shall be required to pay the prescribed fee until successful completion of the program or until the maximum duration permitted under the relevant regulations, whichever occurs first.
- **Fee Revision:** The Final Dissertation Fee is subject to revision based on foreign expert evaluation charges and fluctuations in the prevailing foreign exchange rate.
- **Laboratory Fund:** An amount of Rs. 30,000/- is payable as a Laboratory Fund for sciences programs.

# Academic Rules & Regulations

## How a Semester system works

A Semester system divides the academic year into two 16-18 weeks duration. The academic year starts with the Fall semester in August and ends with the Spring semester in May. A four year Program thus has eight semesters.

## Credit Hour

A student gains one credit hour by attending 16 hours of classes. Most courses are of 3 credit hours, which mean a student is required to attend 48 hours of class teaching to complete a course. The courses in science subjects are of 4 credit hours that include 48 contact hours of class teaching and 32 contact hours of lab work.

For a BFA, a student is required to attend 96 hours of studio classes for a 3 credit hour course.

## Course Registration

All students, after consulting their Head of departments may register themselves in courses they decide to take in each semester. Registration dates are announced well before time and students are required to register themselves online during those dates. New students can get their online login password from their respective departments / Admission Office.

## Add/Drop a Course

Students are allowed to drop a course within two weeks of the commencement of the semester from their online student information system account.

## Withdrawal of a Course

A student may apply for withdrawal from a course up to one week before the commencement of mid-term examinations subject to approval by the Head of Department and the relevant Dean. The approved request will be submitted to the Registrar's office. A course withdrawn within this period shall be recorded on the transcript with a "W" grade, which

will not affect the Cumulative Grade Point Average (CGPA). The student withdrawing after six weeks of the start of the course shall be awarded an "F" grade which shall count in the GPA and stay on the transcript. As per Kinnaird College policy, fees paid for the withdrawn course will neither be refunded nor carried over to the next semester, and the course repeating fee shall be payable whenever the student registers for the course again. Students are advised to consult their academic advisor prior to withdrawal, as it may impact full-time enrollment status, degree completion timeline, and eligibility for scholarships or financial aid.

## Class Attendance

Students are expected to attend every class for each course in which they are enrolled. Absences of more than six lecture hours in 3 credit hours course and 4 lecture-hours in 2 credit hours course will lead to denial of pursuing the course, an "W" on the transcript and the student will have to repeat the course whenever offered again.

## Course Load in a Semester

Students can register for a maximum of 21 credit hours in a regular semester including repeating courses and a maximum of 6 credit hours in the summer semester for an undergraduate program. M.Phil students can take up to a total of 13 credit hours per semester in the regular semester.

## Academic Grading Policy

The performance of students is assessed during the course through a variety of assessment procedures such as written assignments, quizzes, projects, case studies, oral presentations, tests and examinations or any other method considered appropriate by the course teachers and the College. Mid-term and Final examinations contribute 60% and other assessment tasks contribute 40% to the final grade. It is at the discretion of the course teacher to decide on the weightage of all assessment tasks.

Kinnaird strictly follows a 4-point grading system similar to the one prevalent in most accredited institutions around the globe. All grades assigned by the Course Instructor are based on either the Absolute Marking System or the Relative Marking System.

## Absolute Marking System

In this system the student grade is given on the basis of the marks obtained by student on an assessment item. For example, if her marks are between 85 - 89 she will get an 'A' grade and if her marks are between 73 -75 she will get a B grade.

## Grading Criteria

Marks	Grade	Grade Point
90 - 100	A+	4.00
85 - 89	A	3.89
80 - 84	A-	3.67
76 - 79	B+	3.33
73 - 75	B	3.00
70 - 72	B-	2.67
66 - 69	C+	2.33
63 - 65	C	2.00
60 - 62	C-	1.67
56 - 59	D+	1.33
53 - 55	D	1.00
50 - 52	D-	0.67
00 - 49	F	0.00
Withdraw	W	0.00

## Relative Marking System

In this system the overall grading in the class is done so that students can be compared with each other. The top students will be assigned "A" grade while the students who get the lowest marks will be given "D" or "F".

## CGPA

Semester Grade Point Average (GPA) and Cumulative Grade Point Averages (CGPA) will be calculated using the following relationship:

$$\text{GPA} = \frac{(\text{Credit Hours in semester} * \text{Grade Point Earned})}{\text{Total Semester Credit Hours}}$$

$$\text{CGPA} = \frac{(\text{Credit Hours in all semesters} * \text{Grade Point Earned})}{\text{Total Credit Hours Taken in all Semesters}}$$

## Grade F

Grade F will be awarded to students in the following cases:

1. Failure to attain at least 50% marks in a course
2. Failure to appear in the final examinations

## Course Repeat

Grades earned in each semester will appear on the student's transcript. Students receiving an "F" grade must repeat the course by re-taking the entire course including attending all classes and redoing all course work (tests, quizzes, assignments etc.) whenever the course is offered again after payment of the fee. Students receiving a grade "C+" or below for undergraduate program must repeat the course if they fail to maintain a minimum CGPA of 2.50. Graduate students receiving grade "B-" or below must repeat the course if they fail to maintain a minimum CGPA of 3.0. The old grade will remain in the transcript but it will not be included in CGPA calculation and new grade received will be indicated by an asterisk (\*\*) on the transcript indicating the grade was received in a course retake.

## Rechecking of Paper:

A student can apply for rechecking of Final Exams within 15 days after the declaration of result. During re-checking, the Re-checking Committee shall check:

- i. Total marks awarded in the answer sheet.
- ii. The posting of marks from inside to the front page of answer sheet.
- iii. Any question left unmarked.

The Answer sheet once marked shall not be re-evaluated.

### Academic Probation and Dismissal

Students who fail to maintain a minimum CGPA of 2.5 for undergraduate program and CGPA of 3.0 for graduate program will be put on probation for the next semester. If at the end of that semester they fail to attain the required CGPA, they will be dropped from the program altogether.

### Transcript Policies

Official transcripts, bearing the official embossed seal of the College, are issued to all students on completion of all degree requirements only on written request from students. Transcripts or other evidence of attendance will not be issued if dues to the College are not cleared. Each student must obtain a clearance from the Finance Office, showing evidence that all dues have been paid in full, and outstanding balances have been cleared, before a transcript of her record is issued. A minimum of 01 week is required to print an official transcript after the formal request is made.

### Time Limit for Program Completion

Undergraduate students can complete their degree program in a minimum of 4 years and a maximum of 6 years from the date of the first registration. The M.Phil degree must be completed in a minimum of 2 years and a maximum of 3 years from the commencement of the program. The PhD degree must be completed in a minimum of 3 years and a maximum of 8 years from the commencement of the program. If degree requirements are not completed within this time, the student will not be awarded a degree.

### Semester Off / Semester Freeze

Student may take any regular semester(s) off by submitting an application to the Head of Department before the start of the new semester. On approval the application must be forwarded to the Deputy Registrar. A maximum of two consecutive semesters can be taken off but the

maximum duration of the degree program shall remain the same. Students are required to pay a fee of Rs. 6000/- for Undergraduate and Rs. 10,000/- for Graduate programs for each semester taken off to retain her registration with the college.



## Student Code of Conduct

Kinnaird expects that the behavior of its students within and outside the College will be in conformity with standards of morality and discipline. Students will respect the rights and privileges of the members of the Kinnaird community at all times and will conduct themselves in ways that uphold the reputation of the College. Kinnaird encourages and protects a free exchange of ideas for teaching and research purposes within the boundaries of orderliness and civil conduct as stated in this policy.

### 1. General Conduct

All students will present themselves with dignity as mature, law abiding and responsible persons.

- Students are expected to dress in a simple, decent and appropriate manner.
- Students are expected to communicate with faculty and staff in a manner that is respectful, courteous, and professional both in person and through digital platform.
- Students individually, or as a group, will refrain from engaging in any activity which hinders or prevents the participation of another person or group of persons in any of the activities of the College.
- Students will refrain from possession, use, distribution, and sale of illegal drugs, tobacco, and alcohol. The College will take disciplinary actions against any student involved in drug-related activities as per the HEC's policy on drug and tobacco abuse in higher education institutions aiming for drug-free and smoke-free campuses
- Students shall not engage in, assist, associate with or promote any kind of activity of a disruptive nature which would affect the reputation of the College.
- Students shall not conduct or participate in any political activity on campus and shall not organize or participate in demonstration, rallies or picketing on campus.
- Students availing the College hostel facilities shall comply with all the hostel rules and will conduct themselves in a manner that respects the rights of other resident students, faculty and staff of the College. The hostel rules are to be read in conjunction with the Students Code of Conduct.
- Student shall use social media responsibly, ethically, and shall not engage in any online conduct that compromises

the dignity, privacy, safety, well-being, or reputation of any member of the College community or institution.

- Students are not allowed to participate in private parties or trips organized by private entities.

### 2. Academic Conduct

All students will diligently apply themselves to their registered courses of study. They will refrain from any conduct that may lead to the disruption of an academic program of the College.

- Students shall attend all academic activities such as field visits, seminars, workshops, internships etc., in accordance with the attendance requirements of the College with regard to each program except for reasons acceptable to the College.
- The submission of items for assessment is an essential part of the learning process and a vital means of assessing students' understanding of a course. The submitted work, therefore, must be the student's own work. This does not mean that students may not make use of the work of others. While quoting or paraphrasing material from other sources, they must acknowledge the source.
- Each student shall be solely responsible for completing her scheduled assessments and taking her examinations as per course requirements.
- Students are required to read and comply with the Research Policy of Kinnaird College.
- Students are required to contact their departmental Batch Advisor for academic conflict resolution and management.
- Students shall obtain prior authorization from the relevant authority of the College before procuring, possessing, distributing, or receiving any confidential material pertaining to research. Students will respect the confidentiality of the information and will use it in no other circumstances than for authorized academic and professional purposes.
- Students will be required to obtain prior approval in writing from the Principal or her designated nominee for the following:
  - a. Organizing any religious or social activities on campus

- not already scheduled in the academic calendar.
- b. Making public statements, communication, or correspondence with the press or other media for mass communication on behalf of Kinnaird or commenting on the internal affairs of the College.
- c. Inviting Government and/or foreign dignitaries, ministers, representatives of foreign governments/agencies, or other public personalities in their official capacity on campus.

### 3. Disciplinary Offences

Without prejudice to the generality of the provisions of the Code of Conduct, the following conduct by students will constitute a disciplinary offence;

- Repeated failure to attend scheduled instruction, practical work, examination, or other field-based assignments and/or coercing other students to act likewise.
- Students shall refrain from any behavior, whether in person or online, that intimidates, harasses, bullies, threatens, humiliates, coerces, exploits, or causes emotional, psychological, or sexual distress to another individual. Such conduct is inconsistent with the values of the College and may result in disciplinary action.
- Any form of unauthorized picketing, rallies, demonstrations, or organized obstructions of any College function in any manner whatsoever.
- Any attempt to disrupt academic programs of the College or its operations.
- Malicious acts, theft, or attempted theft, willful damage or misuse of College property or property that belongs to other people in the College.
- Possession and use of illegal drugs and smoking in the College.
- Use of mobile phones in academic blocks (classrooms and corridors).
- Unauthorized housing of persons in the hostel or other buildings on the College campus.
- Cheating, collusion, plagiarism, and/or use of unfair means in various assignments, examinations, dissertation/thesis or any other academic work.

- Procurement, possession, use, sale, and display of any weapon, including firearms, items on the College campus, and at College events.
- An Act of violence causing injury or damage to any person or property in the College.
- Raising funds, accepting donations, or engaging in similar activities for and on behalf of the College without a prior written approval of the Principal or her nominee.
- Any form or use of intimidation, insult, abusive language, unruly behavior, disrespectful attitude with students, faculty, staff or clients within or outside the College.
- Providing wrong information, giving false and/or fabricated evidence, deliberately concealing material facts or information in any proceedings and inquiries carried out on any forum by the College.
- Student shall use social media responsibly, ethically, and shall not engage in any online conduct that compromises the dignity, privacy, safety, well-being, or reputation of any member of the College community or institution.
- Committing or involvement in any act of deceit, fraud, forgery with the College, students, staff, and faculty.
- Any act in violation, contravention, or disregard of this Code of Conduct.

All students will strictly uphold and adhere to the Code of Conduct outlined in Clauses 1 to 3 above. In cases where there are grounds to suspect a breach of the Code of Conduct, disciplinary action may be initiated for such behavior committed either within or outside the College.

In case of a disciplinary offence, the College will impose any one or more of the disciplinary actions given below, depending on the severity of the offence.

- Counseling of the student.
- Probation for a specified period of time with mandatory counseling.
- A letter of warning or reprimand to the student.
- Suspension from the College for a specified period.
- Expulsion from the College and/or expulsion from the

hostel if so required.

- Any other penalty which the relevant authority/body of the College may deem fit to impose.



# Teaching Faculty

## ACCOUNTING & FINANCE

**Dr. Syeda Fizza Abbas**  
Assistant Professor/ HOD  
PhD Commerce (PU, Lahore)  
MPhil Commerce (UCP, Lahore)

**Dr. Atia Alam**  
Associate Professor  
PhD Management Sciences (CIIT, Lahore)  
MSc Management Sciences (CIIT, Lahore)

**Dr. Farah Amir**  
Assistant Professor  
PhD Commerce (UCP, Lahore)  
MPhil Commerce (UCP, Lahore)

**Ms. Naila Sadiq**  
Lecturer  
MS Finance (UCP, Lahore)  
BS Management (PU, Lahore)

**Ms. Sumiya Tahir**  
Lecturer  
MPhil Accounting and Finance (KCW, Lahore)  
BS (Hons.) Accounting & Finance (KCW, Lahore)

## APPLIED LINGUISTICS

**Dr. Badriah Khaleel**  
Assistant Professor / HOD  
PhD English (Imperial College of Business Studies, Lahore)  
MPhil Applied Linguistics (KCW, Lahore)

**Dr. Farah Kashif**  
Associate Professor  
PhD English (Linguistics) (BZU, Multan)  
MA English (BZU, Multan)

**Dr. Asma Aftab**  
Assistant Professor  
PhD Applied English Linguistics (University of Birmingham, UK)  
MA English Language Teaching (KCW, Lahore)

**Ms. Sabeen Khurram Qureshi**  
Lecturer  
MPhil English Language Teaching (KCW, Lahore)  
MA Applied Linguistics (KCW, Lahore)

**Ms. Farwa Qazalbash**  
Lecturer  
MPhil English (Linguistics) (Riphah International University, Lahore)  
MA English Language Teaching & Linguistics (PU, Lahore)

**Ms. Fariah Farooq Khan**  
Lecturer  
MPhil Applied Linguistics (KCW, Lahore)  
MA Applied Linguistics (KCW, Lahore)

**Ms. Priya Pervaiz**  
Lecturer  
MPhil English Language Teaching (KCW, Lahore)  
BA (Hons.) English Language & Linguistics (KCW, Lahore)

## ARABIC

**Ms. Narmeen Faryal**  
Assistant Professor  
MPhil Arabic (Minhaj University, Lahore)  
MA Arabic (PU, Lahore)

## BIOCHEMISTRY

**Dr. Hooria Younas**  
Academic Dean of Life Sciences/  
Director ORIC/ Associate Professor  
PhD Biological Sciences (PU, Lahore)  
MSc. Biochemistry (PU, Lahore)

**Dr. Raazia Tasadduq**  
Assistant Professor/ HOD  
PhD Biological Sciences (PU, Lahore)  
BSc (Hons) Microbiology & Molecular Genetics (PU, Lahore)

**Dr. Amna Younus**  
Assistant Professor  
PhD Chemistry (LCWU, Lahore)  
MS Biochemistry (PU, Lahore)

**Dr. Ruqyya Khalid**  
Assistant Professor  
PhD Biological Sciences (PU, Lahore)  
MPhil Biological Sciences (PU, Lahore)

**Ms. Sammar Aaroon**  
Lecturer  
MPhil Molecular Biology (PU, Lahore)  
BSc (Hons) Biochemistry (KCW, Lahore)

## BIOTECHNOLOGY

**Prof. Dr. Iram Anjum**  
Principal/Professor/Registrar  
PhD Biotechnology (QAU, Islamabad)  
MSc Zoology (BZU, Multan)

**Dr. Samina Hassan**  
Associate Professor/ HOD  
PhD Molecular Biology (PU, Lahore)  
MPhil Biotechnology (QAU, Islamabad)

**Prof. Dr. Shahnaz Choudhry**  
Professor  
PhD Molecular Biology (PU, Lahore)  
MSc Zoology (PU, Lahore)

**Dr. Sumaira Anjum**  
Tenured Associate Professor  
PhD Biotechnology (QAU, Islamabad)  
MPhil Biochemistry/ Molecular Biology (QAU, Islamabad)

**Dr. Shumaila Zulfiqar**  
Assistant Professor  
PhD Biotechnology (PIEAS, Islamabad)  
MS Biotechnology (GCU, Faisalabad)

**Dr. Tanveer Majeed**  
Assistant Professor  
PhD Biotechnology (PIEAS, Islamabad)  
MPhil Biotechnology (PIEAS, Islamabad)

**Dr. Komal Aslam**  
Assistant Professor  
PhD Biotechnology (LCWU, Lahore)  
MPhil Biochemistry (KCW, Lahore)

**Ms. Roeha Akhtar**  
Lecturer  
MPhil Biotechnology (KCW, Lahore)  
BSc (Hons) Biotechnology (KCW, Lahore)

## BIOLOGICAL SCIENCES

**Ms. Shahnila Bukhari**  
Associate Dean (Sciences) for  
Intermediate Studies/ HOD/Assistant  
Professor  
MPhil Botany (University of Agriculture, Faisalabad)  
MSc Botany (IUB, Bahawalpur)

**Dr. Iffat Amin**  
Lecturer  
PhD Fisheries and Aquaculture (UVAS, Lahore)  
MPhil Zoology (GCU, Lahore)

**Ms. Mehak Ayub**  
Lecturer  
MPhil Environmental Sciences (KCW, Lahore)  
BSc (Hons) Zoology (KCW, Lahore)

**Ms. Salwa Nisar**  
Lecturer  
MPhil Botany (GCU, Lahore)  
BSc (Hons) Botany (GCU, Lahore)

**Ms. Amna Amin**  
Lecturer  
MPhil Zoology (PU, Lahore)  
MSc Zoology (PU, Lahore)

## BUSINESS STUDIES

**Dr. Usamah Iyyaz Billah**  
Assistant Professor/ HOD  
PhD Commerce (PU, Lahore)  
MPhil Commerce (PU, Lahore)

**Dr. Sadia Arshad**  
Assistant Professor  
PhD Business Administration (NCBA&E, Lahore)  
MPhil Business Administration (KCW, Lahore)

**Dr. Javaria Asim**  
Assistant Professor  
PhD Business Administration (NCBA&E, Lahore)  
MCom (PU, Lahore)

**Dr. Asma Nisar**  
Assistant Professor  
PhD Business Administration (NCBA&E, Lahore)  
MBA (NUCES, Lahore)

**Dr. Anam Tariq**  
Assistant Professor  
PhD Accounting and Finance (UCP, Lahore)  
MPhil Commerce (UCP, Lahore)

**Ms. Sara Aslam**  
Lecturer  
MSc HRM (University of Glasgow,  
Scotland, UK)  
MBA (UMT, Lahore)

## CHEMISTRY

**Dr. Rahila Huma**  
Academic Dean of Mathematical and  
Physical Sciences/Associate Professor  
PhD Chemistry (PU, Lahore)  
MPhil Chemistry (PU, Lahore)

**Dr. Rubina Munir**  
Assistant Professor/ HOD  
PhD Chemistry (PU, Lahore)  
MPhil Chemistry (PU, Lahore)

**Dr. Faryal Chaudhry**  
Assistant Professor  
PhD Chemistry (PU, Lahore)  
MSc Chemistry (PU, Lahore)

**Dr. Amna Yousaf**  
Assistant Professor  
PhD Chemistry (PU, Lahore)  
MS Chemistry (PU, Lahore)

**Dr. Anum Hayat**  
Assistant Professor  
PhD Chemistry (FCCU, Lahore)  
MPhil Chemistry (FCCU, Lahore)

**Ms. Ayesha Roohi**  
Lecturer  
MPhil Chemistry (PU, Lahore)  
MSc Chemistry (PU, Lahore)

**Ms. Anum Khaleeq**  
Lecturer  
MPhil Chemistry (PU, Lahore)  
BSc (Hons) Chemistry (PU, Lahore)

**Ms. Fatima Ashraf**  
Lecturer  
MPhil Applied Chemistry (UET,  
Lahore)  
MSc Applied Chemistry (UET,  
Lahore)

**Ms. Zunera Umar**  
Lecturer  
MS Chemistry (PU, Lahore)  
BS Chemistry (PU, Lahore)

## COMPUTER SCIENCE

**Dr. Sidra Zafar**  
Assistant Professor/ HOD  
PhD Computer Science (LCWU)  
MS Computer Science (LCWU)

**Ms. Jaweria Manzoor**  
Assistant Professor  
MS Computer Science (KCW, Lahore)  
BS Computer Science (KCW, Lahore)

**Dr. Ghousia Usman**  
Assistant Professor  
PhD Computer Science (LCWU,  
Lahore)  
MPhil Computer Science (LCWU,  
Lahore)

**Ms. Amna Ali**  
Lecturer  
MPhil Computer Science (KCW,  
Lahore)  
BS Computer Science (KCW, Lahore)

**Ms. Rida Hijab Basit**  
Lecturer  
MS Computer Science (UET, Lahore)  
BS Computer Science (KCW, Lahore)

**Ms. Arfa Dilawari**  
Lecturer  
MSc Electrical Engineering (UET,  
Lahore)  
BSc Electrical Engineering (UET,  
Lahore)

**Ms. Attiya Khan**  
MS Computer Science (KCW, Lahore)  
BS (Hons) Computer Science (KCW,  
Lahore)

**Ms. Rabia Abid**  
Lecturer  
MPhil Computer Science (KCW,  
Lahore)  
MSc Information Technology (PU,  
Lahore)

**Ms. Faryal Tanseer**  
Lecturer  
MS Electrical Engineering (LCWU,  
Lahore)  
Bachelor of Electronic Engineering  
(LCWU, Lahore)

## ECONOMICS

**Ms. Sukaina Riaz**  
Assistant Professor/ HOD  
MPhil Economics (GCU, Lahore)  
MA Economics (PU, Lahore)

**Ms. Zubda Zia-Ur-Rehman**  
Assistant Professor  
MPhil Political Science (KCW,  
Lahore)  
MA Economics (PU, Lahore)

**Ms. Farhat Iqbal Awan**  
Assistant Professor  
MPhil Economics (PU, Lahore)  
MA Economics (PU, Lahore)

**Ms. Salaha Waheed**  
Lecturer  
MPhil Economic (GCU, Lahore)  
BS (Hons) Economics (GCU, Lahore)

**Ms. Anum Abdullah**  
Lecturer  
MS Economics (LUMS, Lahore)  
BSc Economics (LSE, Lahore)

## EDUCATION

**Dr. Qurratulain Rehan**  
Assistant Professor/ HOD  
PhD Education (LCWU)  
MPhil English Language Teaching  
(KCW, Lahore)

**Dr. Mazna Toosy**  
Assistant Professor  
PhD Education (LCWU)  
MPhil Education (BNU)

**Ms. Farzana Iqbal**  
Lecturer  
MPhil Education (PU, Lahore)  
MA Education (PU, Lahore)

**Ms. Maham Muzamil**  
Lecturer  
MPhil Education (UOL, Lahore)  
MED Education (UE, Lahore)

**Ms. Shafaq Rizwan**  
Lecturer  
MPhil Education (PU, Lahore)  
BS (Hons) Education (PU, Lahore)

## ENGLISH/ENGLISH LITERATURE

**Dr. Zakia Reshid Ehsen**  
Associate Professor/ HOD (Graduate)  
Ph.D English (PU, Lahore)  
MPhil English (University of the  
Punjab, Lahore)

**Ms. Mahwish Khan**  
Lecturer/ HOD (Undergraduate)  
MPhil English Literature (KCW,  
Lahore)  
MA English Literature (BNU, Lahore)

**Prof. Dr. Waseem Anwar**  
Professor/Director ICPWE  
PhD English (Indiana University of  
Pennsylvania, USA)  
MPhil English (PU, Lahore)

**Prof. Nasreen Pasha**  
Professor  
MA TEFL (AIOU, Lahore)  
MA English Literature (PU, Lahore)

**Prof. Nadia Anjum**  
Professor  
MA (University of the Punjab,  
Lahore)  
BA (University of the Punjab, Lahore)

**Ms. Sadia Ghaznavi**  
Assistant Professor  
MPhil English Literature (KCW,  
Lahore)  
MA English Literature (KCW, Lahore)

**Ms. Zahra Hanif**  
Lecturer  
MPhil English Literature (KCW,  
Lahore)  
BA English Literature (KCW, Lahore)

**Ms. Numrah Mehmood**  
Lecturer  
MPhil English (FCCU, Lahore)  
MA English (FCCU, Lahore)

**Ms. Arjmand Bano**  
Lecturer  
MPhil English (GCU, Lahore)  
MA English (LCWU, Lahore)

**Ms. Rija Ahsan**  
Lecturer  
MPhil English Literature (KCW,  
Lahore)  
BA (Hons) English Literature (KCW,  
Lahore)

**Ms. Maryam Amjad Ali**  
Lecturer  
MPhil English (University of the  
Punjab)  
BS (Hons) English (University of the  
Punjab)

**Ms. Inbisat Shuja**  
Lecturer  
MPhil English Literature (KCW,  
Lahore)  
BA (Hons) English Literature (KCW,  
Lahore)

**Ms. Sahar Hamid**  
Lecturer  
MPhil English (PU, Lahore)  
BA (Hons) English Literature (KCW,  
Lahore)

**Ms. Arooba Fatima**  
Lecturer  
MPhil English Literature (PU,  
Lahore)  
MA English (PU, Lahore)

**Ms. Faryal Munir**

Lecturer  
MA English Literature (GCU, Lahore)  
BA (PU, Lahore)

## ENVIRONMENTAL SCIENCES

**Dr. Helen Khokhar**

Dean of Intermediate Program/  
Associate Professor  
PhD Environmental Management  
(NCBA&E, Lahore)  
MPhil Environmental Science (KCW,  
Lahore)

**Dr. Syeda Amber Fatima**

Assistant Professor/ HOD  
PhD Environmental Sciences (PU,  
Lahore)  
MPhil Environmental Sciences (PU,  
Lahore)

**Prof. Dr. Ghazala Yaqub**

Tenured Professor  
PhD Chemistry (LCWU, Lahore)  
MS Chemistry (LCWU, Lahore)

**Dr. Almas Hamid**

Associate Professor  
PhD Environmental Sciences (PU,  
Lahore)  
MPhil Environmental Sciences (KCW,  
Lahore)

**Dr. Sadia Saif**

Assistant Professor  
PhD Environmental Sciences (LCWU,  
Lahore)  
MS Applied Environmental Sciences  
(LCWU, Lahore)

**Dr. Sana Akhtar**

Assistant Professor  
PhD Environmental Sciences (PU,  
Lahore)  
MPhil Environmental Science (PU,  
Lahore)

## FINE ARTS

**Ms. Mizna Zulfiqar**

Associate Professor/ HOD  
MA (Hons) Visual Art (NCA, Lahore)  
Bachelor in Fine Arts (NCA, Lahore)

**Ms. Kiran Saeed**

Assistant Professor  
MA (Hons) Visual Art (NCA, Lahore)  
Bachelor in Fine Arts (NCA, Lahore)

**Ms. Amra Fatima Khan**

Assistant Professor  
MA (Hons) Visual Art ((NCA, Lahore)  
Bachelor in Fine Arts (NCA, Lahore)

**Ms. Rebecca Arfan**

Assistant Professor  
MS Fine Arts (LCWU, Lahore)  
Bachelor in Fine Arts (NCA, Lahore)

**Ms. Maryam Tahir**

Assistant Professor  
MS Fine Arts (LCWU, Lahore)  
Bachelor in Fine Arts (NCA, Lahore)

**Ms. Yumna**

Lecturer  
MA Arts and Design (BNU, Lahore)  
Bachelor of Fine Arts (MUET)

**Ms. Quratulain Dar**

Lecturer  
MPhil Cultural Studies (NCA, Lahore)  
Bachelor of Fine Arts (PU, Lahore)

## FOOD SCIENCE AND HUMAN NUTRITION

**Dr. Rabia Naz**

Assistant Professor / HOD  
PhD Food Technology (University of  
Agriculture, Faisalabad)  
MSc. (Hons) Food Technology  
(University of Agriculture, Faisalabad)

**Dr. Nadia Akram**

Assistant Professor  
PhD Food Technology (University of  
Agriculture, Faisalabad)  
MPhil Food Science & Human  
Nutrition (KCW, Lahore)

**Ms. Nasreen Kausar**

Lecturer  
MPhil Food Science & Human  
Nutrition (KCW, Lahore)  
MSc Food & Nutrition (UHE, Lahore)

**Ms. Fasiha Ilyas**

Lecturer  
MSc. (Hons) Home Economics (Food  
& Nutrition) (University of Agriculture,  
Faisalabad)  
BSc (Hons) Home Economics (LCWU,  
Lahore)

**Ms. Syeda Aliya Sherazi**

Lecturer  
MPhil Home Economics (UHE,  
Lahore)  
BS Home Economics (UHE, Lahore)

**Ms. Nida Tasneem Khan**

Lecturer  
MPhil Food Science & Human  
Nutrition (KCW, Lahore)  
BSc (Hons) Home Economics (UHE,  
Lahore)

**Ms. Qurat ul Ain Aleem**

Lecturer  
MPhil Public Health (PU, Lahore)  
MSc Home Economics (UHE, Lahore)

**Ms. Samawia Qureshi**

Lecturer  
MPhil Food and Nutrition (University  
of Home Economics, Lahore)  
BSc (Hons) Home Economics (UHE,  
Lahore)

## FRENCH

**Ms. Syeda Amber Jafar**

Lecturer  
MA French (KCW, Lahore)

## GEOGRAPHY

**Dr. Ambreena Javaid**

Assistant Professor/ HOD  
PhD Geomatics (PU, Lahore)  
MPhil Geography (PU, Lahore)

**Ms. Rabia Shahid**

Assistant Professor  
MS Geography (GCU, Lahore)  
MSc Geography (PU, Lahore)

**Ms. Shumaila Majeed Quershi**

Assistant Professor  
MPhil Geomatics (PU, Lahore)  
MSc. Geography (PU, Lahore)

**Ms. Jasia Jawad**

Lecturer  
MS Remote Sensing and Geographical  
Information System (NUST,  
Islamabad)  
BS (Hons) Geography (KCW, Lahore)

**Ms. Aamina Ishaq**

Lecturer  
MS Geography (PU, Lahore)  
MSc Geography (PU, Lahore)

## INTERNATIONAL RELATIONS

**Dr. Aiysha Safdar Ali**

Academic Dean of Social Sciences and  
Law/ HOD/Associate Professor  
PhD International Relations (PU,  
Lahore)  
MPhil International Relations (KCW,  
Lahore)

**Dr. Asia Mukhtar**

Assistant Professor  
PhD. International Relations (PU,  
Lahore)  
MPhil Political Science (PU, Lahore)

**Dr. Qudsia Akram**

Assistant Professor  
PhD International Relations (PU,  
Lahore)  
MPhil International Relations (QAU,  
Islamabad)

**Dr. Shireen Mushtaq**

Assistant Professor  
PhD International Relations (PU,  
Lahore)  
MPhil International Relations (KCW,  
Lahore)

**Ms. Ramsha Tariq**

Lecturer  
MPhil International Relations (KCW,  
Lahore)  
BS (Hons) International Relations  
(LCWU)

**Ms. Aiman Iqbal**

Lecturer  
MPhil International Relations (KCW,  
Lahore)  
BA (Hons) International Relations  
(KCW, Lahore)

## ISLAMIC STUDIES

**Ms. Tasneem Niazi**

Assistant Professor  
MPhil Islamic Studies (Minhaj  
University, Lahore)  
MA Islamic Studies (IUB, Bahawalpur)

**Ms. Sara Iqbal**

Assistant Professor  
MPhil Islamic Studies (PU, Lahore)  
MA Islamic Studies (PU, Lahore)

**Ms. Faiza Batool**

Lecturer  
MPhil Islamic Studies (PU, Lahore)  
MA Islamic Studies (PU, Lahore)

**Ms. Samawia Saeed**

Lecturer  
MA Islamic Studies (LCWU)  
MA ELT (KCW, Lahore)

## LAW

**Ms. Shaffaf Shahid**

Assistant Professor/ HOD  
LLM (Washington University, St.  
Louis)  
LLB (LUMS, Lahore)

**Ms. Ayesha Jawad**

Assistant Professor  
LLM (University of Kent, UK)  
LLB (PU, Lahore)

**Ms. Maira Bokhari**

Assistant Professor  
LLB (University of London)

**Ms. Sana Akhter**

Assistant Professor  
LLM (PU, Lahore)  
LLB (PU, Lahore)

## MATHEMATICS

**Dr. Sadaf Butt**

Associate Professor/ HOD  
PhD Mathematics (COMSATS  
University Islamabad, Lahore Campus)  
MPhil Mathematics (Lahore Leads  
University, Lahore)

**Ms. Zeba Sohail**

Professor  
MPhil Applied Mathematics  
(NCBA&E, Lahore)  
MSc. Mathematics (PU, Lahore)

**Ms. Shamaila Waheed**  
Assistant Professor  
MPhil Mathematics (GCU, Lahore)  
MSc. Mathematics (PU, Lahore)

**Ms. Iqra Saeed**  
Lecturer  
MS Mathematics (PU, Lahore)  
BS (Hons) Mathematics (PU, Lahore)

**Ms. Fakhra Gulzar**  
Lecturer  
MS Mathematics (NUCES, Islamabad)  
BS (Hons) Mathematics (LCWU, Lahore)

**Ms. Zara Nadeem**  
Lecturer  
MPhil Mathematics (PU, Lahore)  
BS (Hons) Mathematics (PU, Lahore)

**Ms. Tuba Parvez**  
Lecturer  
MPhil Mathematics (UET, Lahore)  
MSc. Mathematics (UET, Lahore)

**Ms. Iqra Yaqoot**  
Lecturer  
MS Mathematics (NUCES, Lahore)  
BSc (Hons) Mathematics (KCW, Lahore)

**Ms. Fatima Aamir**  
Lecturer  
MS Mathematics (LCWU)  
BS Mathematics (KCW, Lahore)

## **MEDIA STUDIES**

**Dr. Sadia Safir Tarar**  
Assistant Professor/ HOD  
PhD Media and Communication  
(UCP)  
MPhil Communications Studies (PU, Lahore)

**Dr. Kiran Karamat**  
Assistant Professor  
PhD Communication Studies (PU, Lahore)  
MS Mass Communication (LCWU, Lahore)

**Dr. Maira Qaddos**  
Assistant Professor  
PhD Communication Studies (PU, Lahore)  
MPhil Communication Studies (PU, Lahore)

**Ms. Amna Waheeda**  
Lecturer  
MPhil Mass Communication (BNU, Lahore)  
MA Mass Communication (BNU, Lahore)

## **MUSIC**

**Ms. Mughira Ahmad**  
Assistant Professor  
BA (Hons) Musicology (NCA, Lahore)

**Mr. Abdul Rauf**  
Assistant Professor  
MA Political Science (PU, Lahore)

## **PERSIAN**

**Dr. Attiya Haider**  
Assistant Professor  
PhD Persian (PU, Lahore)  
MPhil Persian (PU, Lahore)

## **PHILOSOPHY**

**Ms. Hadiqa Atif**  
Lecturer  
MPhil Philosophy (PU, Lahore)  
BS (Hons) Philosophy (PU, Lahore)

**Ms. Romaza Amjad**  
Lecturer  
MPhil Philosophy (PU, Lahore)  
MA Philosophy (PU, Lahore)

## **PHYSICS**

**Dr. Faiza Uzma**  
Assistant Professor/ HOD  
PhD Physics (University of Science and Technology, China)  
MS Computational Science and Engineering (NUST, Islamabad)

**Ms. Aysha Aftab**  
Lecturer  
MPhil Solid State Physics (PU, Lahore)  
MSc. Physics (PU, Lahore)

**Ms. Samia Qamar**  
Assistant Professor  
MSc Electrical Engineering (UET, Lahore)  
BSc. Electrical Engineering (UET, Lahore)

**Ms. Saima Mubeen**  
Assistant Professor  
BSc. Electrical Engineering (UET, Lahore)

**Ms. Ayesha Asghar**  
Lecturer  
MS Physics (LCWU, Lahore)  
BS Computational Physics (PU, Lahore)

**Ms. Rabia Shaharyar**  
Lecturer  
MS Physics (LCWU, Lahore)  
BS Physics (LCWU, Lahore)

## **POLITICAL SCIENCE AND PAKISTAN STUDIES**

**Dr. Asma Awan**  
Associate Professor/ HOD  
PhD Political Science (PU, Lahore)  
MPhil (PU, Lahore)

**Dr. Khushboo Ejaz**  
Associate Professor  
PhD South Asian Studies (PU, Lahore)  
MPhil South Asian Studies (PU, Lahore)

**Dr. Syed Iazaz Ahmad Bukhari**  
Assistant Professor  
PhD History (IUB)  
MPhil Pakistan Studies (IUB)

**Ms. Bushra Jabeen**  
Assistant Professor  
MPhil Pakistan Studies (Minhaj University, Lahore)  
MA History (PU, Lahore)

**Ms. Zoya Shaffay**  
Lecturer  
MPhil Political Science (KCW, Lahore)  
BS (Hons) Political Science (KCW, Lahore)

**Ms. Tabita Victor**  
Lecturer  
MPhil Political Science (GCU, Lahore)  
MA Political Science (FCCU, Lahore)

**Ms. Dure Shahwar Bano**  
Lecturer  
MPhil Political Science (GCU, Lahore)  
BS International Relations (LCWU, Lahore)

**Ms. Sabah Mushtaq**  
Lecturer  
MPhil History (QAU, Islamabad)  
MS History (QAU, Islamabad)

**Ms. Zainab Asif Dar**  
Lecturer  
MPhil Political Science (KCW, Lahore)  
BA (Hons) Political Science (KCW, Lahore)

**Ms. Marriam Mubashar**  
Lecturer  
MPhil Political Science (KCW, Lahore)  
BA (Hons) Political Science (KCW, Lahore)

**Ms. Iqra Sarfraz**  
Lecturer  
MS Political Science (LCWU, Lahore)  
BS Political Science (LCWU, Lahore)

**Ms. Ayesha Khalid**  
Lecturer  
MPhil Political Science (KCW, Lahore)  
BS Political Science (KCW, Lahore)

## **PUNJABI**

**Ms. Satwant Kour**  
Lecturer  
MS Punjabi (LCWU, Lahore)  
MA Punjabi (LCWU, Lahore)

## **PSYCHOLOGY**

**Prof. Dr. Masha Asad Khan**  
Dean of Postgraduate Studies/  
Professor  
PhD Clinical Psychology (PU, Lahore)  
MPhil Clinical Psychology (PU, Lahore)

**Dr. Afsheen Gul**  
Associate Professor/ HOD  
PhD Applied Psychology (PU, Lahore)  
MSc. Applied Psychology (PU, Lahore)

**Ms. Sonia Adil**  
Assistant Professor  
MPhil Clinical Psychology (KCW, Lahore)  
MSc. Applied Psychology (PU, Lahore)

**Ms. Mahira Ahmed**  
Assistant Professor  
MPhil Clinical Psychology (KCW, Lahore)  
MSc Psychology (QAU)

**Dr. Asma Majeed**  
Assistant Professor  
PhD Gender Studies (PU, Lahore)  
MS Psychology (GCU, Lahore)

**Ms. Zara Haroon**  
Lecturer  
MPhil Clinical Psychology (KCW, Lahore)  
BSc (Hons) Applied Psychology (KCW, Lahore)

**Ms. Sara Asad**  
Lecturer  
MS Clinical Psychology (PU, Lahore)  
BS (Hons) Clinical Psychology (PU, Lahore)

**Ms. Zarafsheen Khalid**

Lecturer  
MS Clinical Psychology (KCW,  
Lahore)  
BS (Hons) Applied Psychology (KCW,  
Lahore)

## **SPORTS AND PHYSICAL EDUCATION**

**Dr. Ammara Rubab**

Assistant Professor/ HOD  
PhD Sports Sciences and Physical  
Education (UOL, Lahore)  
MPhil Sports Sciences and Physical  
Education (UOL, Lahore)

**Ms. Abida Taj**

Lecturer  
MSc Physical Education (GCU,  
Lahore)  
B.A (PU, Lahore)

## **STATISTICS**

**Dr. Kalsoom Akhtar**

Vice Principal /Director Student  
Affairs  
Associate Professor  
PhD Applied Statistics (NCBA&E,  
Lahore)  
MPhil Statistics (UoL)  
MSC Statistics (PU, Lahore)

**Dr. Naila Alam**

Assistant Professor/ HOD  
PhD Statistics (NCBA&E, Lahore)  
MPhil Statistics (NCBA&E, Lahore)

**Prof. Dr. Saleha Naghmi Habibullah**

Professor  
PhD. Applied Statistics (NCBA&E,  
Lahore)  
MSc. Statistics (University of Toronto,  
Canada)

**Dr. Shaista Shumaila**

Assistant Professor  
PhD Statistics (NCBA&E, Lahore)  
MPhil Statistics (PU, Lahore)

**Ms. Fatima Jamil**

Lecturer  
MPhil Statistics (KCW, Lahore)  
BS (Hons) Statistics (LCWU, Lahore)

**Ms. Tooba Khan**

Lecturer  
MPhil Statistics (GCU, Lahore)  
BS (Hons) Statistics (LCWU, Lahore)

**Ms. Zunaira Khurrum**

Lecturer  
MPhil Statistics (NCBA&E, Lahore)  
BSc. (Hons) Statistics (KCW, Lahore)

## **TEXTILE DESIGN**

**Ms. Saima Jabbar**

Academic Dean of Arts and  
Humanities/ HOD/Associate  
Professor/  
MS Fine Arts (LCWU, Lahore)  
Bachelor of Design (NCA, Lahore)

**Ms. Fatima Imran**

Assistant Professor  
MPhil Arts and Design Education  
(PIFD, Lahore)  
Bachelor of Design (KCW, Lahore)

**Ms. Zainab Shahid**

Lecturer  
Bachelor of Textile Design (KCW,  
Lahore)

**Ms. Nazish Khan**

Lecturer  
Bachelor of Textile Design (PIFD,  
Lahore)

**Ms. Minahil Tauseef**

Lecturer  
Bachelor of Design (KCW, Lahore)

## **URDU**

**Dr. Elizabeth Shad**

Associate Dean (Humanities and  
Social Sciences) for Intermediate  
Studies/ Associate Professor  
PhD Urdu (UoE, Lahore)  
MPhil Urdu (UoE, Lahore)

**Dr. Sheeba Alam**

Associate Professor/ HOD  
PhD Urdu (GCU, Lahore)  
MPhil Urdu Literature (GCU, Lahore)

**Dr. Shazia Sajid Sulehri**

Assistant Professor  
PhD Urdu (UE, Lahore)  
MPhil Urdu (UE, Lahore)

**Dr. Faiza Butt**

Assistant Professor  
PhD. Urdu (PU, Lahore)  
MPhil leading to PhD. (PU, Lahore)

**Dr. Tahira Siddiqua**

Assistant Professor  
PhD. Urdu (GCU, Lahore)  
MPhil Urdu (GCU, Lahore)

**Ms. Misbah Tajammal**

Assistant Professor  
MPhil Urdu (GCU, Lahore)  
MA Urdu (FCCU, Lahore)

**Ms. Bushra Shereen**

Assistant Professor  
MPhil Urdu (UE, Lahore)  
MA Urdu (PU, Lahore)

**Dr. Sarah Sarfraz**

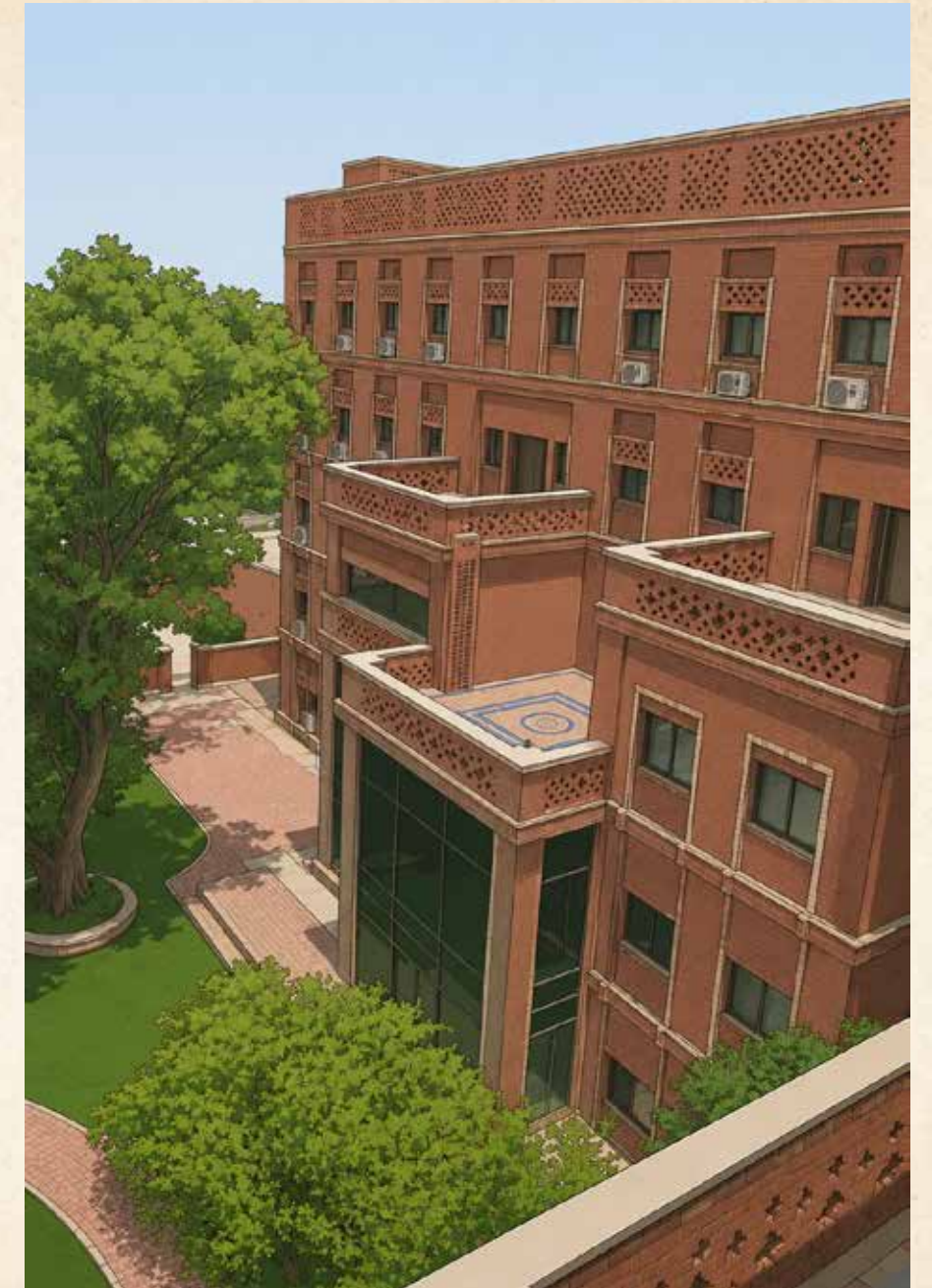
Assistant Professor  
PhD Urdu (Lahore Garrison  
University)  
MPhil Urdu (GCU, Lahore)

**Dr. Humera Majid**

Senior Lecturer  
PhD Urdu (GCU, Lahore)  
MPhil Urdu (GCU, Lahore)

**Ms. Munaza Tabasum**

Lecturer  
MPhil Urdu (FCCU, Lahore)  
BA (Hons) Urdu (KCW, Lahore)



## Administration

### ACADEMIC ADMINISTRATION

**Prof. Dr. Iram Anjum**  
Principal/Registrar

**Dr. Kalsoom Akhtar**  
Vice Principal

**Prof. Dr. Masha Asad Khan**  
Dean of Graduate Program

**Dr. Hooria Younas**  
Academic Dean of Life Sciences /  
Director ORIC

**Dr. Rahila Huma**  
Academic Dean of Mathematical and  
Physical Sciences

**Ms. Saima Jabbar**  
Academic Dean of Arts and  
Humanities

**Dr. Aiysha Safdar Ali**  
Academic Dean of Social Sciences and  
Law

**Dr. Helen Khokhar**  
Dean of Intermediate Program

**Dr. Elizabeth Shad**  
Associate Dean (Humanities and  
Social Sciences) for Intermediate  
Studies

**Ms. Shahneela Bukhari**  
Associate Dean (Sciences) for  
Intermediate Studies

### MANAGEMENT AND ADMINISTRATIVE POSITIONS

**Administration (Facilities and Services)**

**Lt. Col. (r) Adnan Khawar Dar**  
Manager Administration

### Finance

**Mr. Muhammad Irshad Ramzan**  
Finance Manager

**Mr. Ashfaq Abdul Rashid**  
Internal Auditor

**Mr. Sheraz Hassan**  
Deputy Manager Finance

**Mr. Muhammad Usman Ghani**  
Assistant Manager Finance

**Mr. Sohail Iqbal**  
Assistant Manager Purchase

**Mr. Tariq Saleem**  
Accounts Officer Post Graduate

### Hostels

**Ms. Elizabeth Shamsa**  
Hostel Coordinator

### Human Resources

**Maj. (retd.) Sohail Khurshid**  
Head Human Resources

**Ms. Mahnoor Maqbool**  
Manager Human Resources

### Information Technology (IT)

**Mr. Muhammad Qadir Bakhsh**  
Manager Information Technology

**Mr. Ali Bahadur**  
Assistant System Administrator

### Laboratory

**Mr. Haseeb Akram**  
Director Laboratories



### Library

**Ms. Munazza Mahmood**  
Chief Librarian

### Office of Research, Innovation & Commercialization (ORIC)

**Dr. Hooria Younas**  
Director Office of Research,  
Innovation and Commercialization  
(ORIC)

**Ms. Umadia Irshad**  
Manager of University-Industrial  
Linkages and Technology Transfer

**Ms. Mubarah Tariq**  
Manager Research Management

### Business Incubation Center (BIC)

**Ms. Meashall Usman**  
Manager Business Incubation Center

### Office of Quality Assurance and Institutional Effectiveness (QA&IE)

**Mr. Awais Abdul Wahid**  
Director Quality Assurance and  
Institutional Effectiveness (QA&IE)

### Registrar Office (Admission & Examination)

**Dr. Farooq Babar**  
Deputy Registrar

**Ms. Raviha Anum**  
Deputy Controller of Examination

**Ms. Amna Allaud Din**  
Assistant Registrar

**Ms. Shelly Billu William**  
Assistant Registrar

### Security

**Major (R) David Emmanuel**  
Manager Security

### Other Centres/Departments

**Ms. Abeeha Shaloom**  
Campus Counselor

**Ms. Anila Obed Arthur**  
Community Service Coordinator

**Dr. Waseem Anwar**  
Director International Centre for  
Pakistani Writing (ICPWE)

**Ms. Kiran Irshad**  
Program Manager  
Radio Kinnaird



# Tentative Academic Calendar 2026-2027

## for Undergraduate & Graduate Programs

### Fall Semester 2026

Orientation of New Students	August 17, 2026
Academic Session Begins	August 18, 2026
Milad un-Nabi**	August 25, 2026
Deadline to Drop a Course	August 27, 2026
Deadline to Withdraw a Course	October 02, 2026
Midterm Examinations	October 05 - October 15, 2026
Allama Iqbal Day	November 09, 2026
Final Examinations	December 07- 18, 2026
Christmas and Winter break	December 19 - January 15, 2027
Declaration of Result	January 12, 2027

### Spring Semester 2027

Orientation of New Students	January 18, 2027
Academic Session Begins	January 19, 2027
Deadline to Drop a Course	January 27, 2027
Kashmir Day*	February 05, 2027
Deadline to Withdraw a Course	March 18, 2027
Eid-ul-Fitr Holidays**	March 09 - 12, 2027
Pakistan Day*	March 23, 2027
Easter and Spring Break	March 22 - March 29, 2027
Midterm Examinations	March 30 - April 09, 2027
May Day*	May 01, 2027
Eid-ul-Adha Holidays**	May 17 - May 19, 2027
Final Examinations	May 31- June 10, 2027
Declaration of Result	June 21, 2027

\*Gazetted / Public Holidays

\*\*Holidays Subject to the appearance of the moon



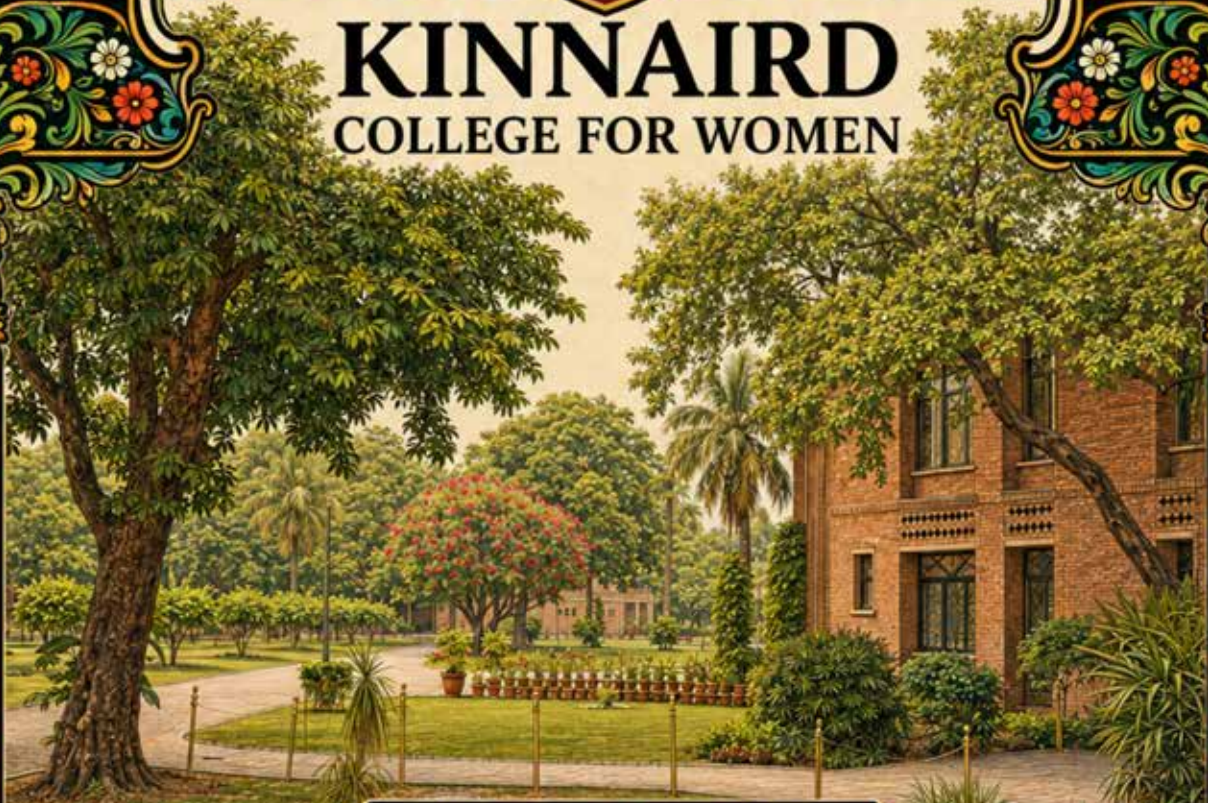
Research illuminates the path to innovation  
and empowers a better tomorrow.

Handbook design & illustrated by Saima Jabbar



# KINNAIRD

## COLLEGE FOR WOMEN



### CONTACT INFORMATION

93-Jail Road, Lahore | Tel: 92 42 111-529-111

[kinnaird.edu.pk](http://kinnaird.edu.pk) | [info@kinnaird.edu.pk](mailto:info@kinnaird.edu.pk)



KINNAIRDOFFICAL



KINNAIRDOFFICAL



**EMPOWERING WOMEN, SHAPING FUTURES.**

A legacy of excellence since 1913.