



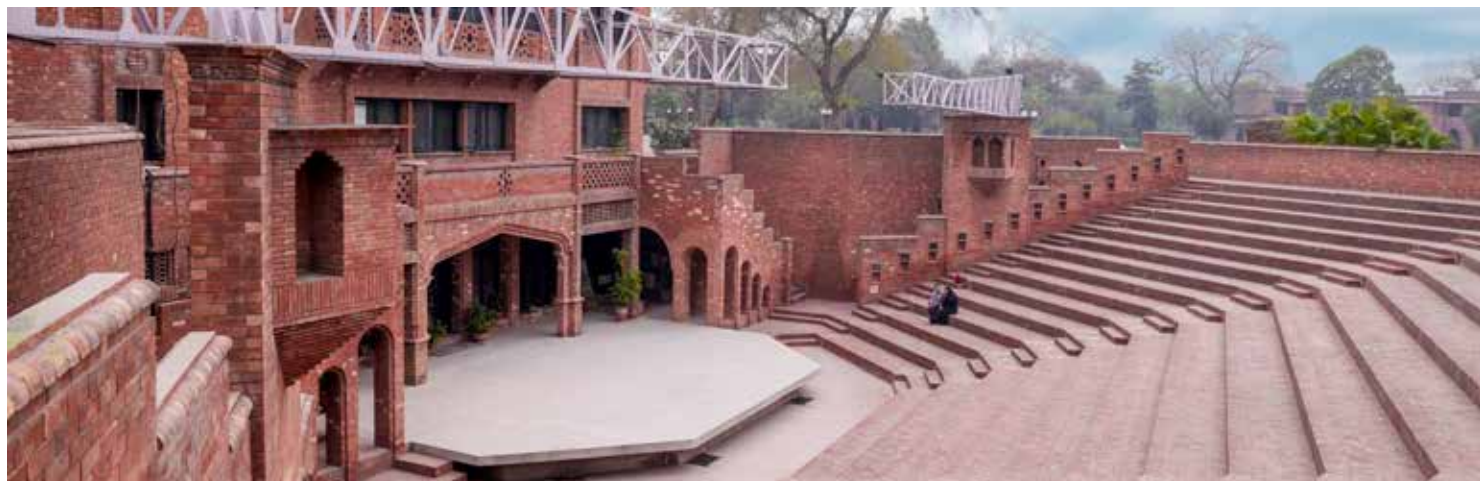
KINNAIRD  
COLLEGE

*Light to guide us,*

*Courage to support us &*

*Love to unite us*

UNDERGRADUATE & GRADUATE  
ADMISSION HANDBOOK 2024-25



## Vision

The Vision of Kinnaird is to be a Centre of Excellence for the education of women by offering academic programs of International Standards and engaging in research and service that supports development of new knowledge, ideas and social responsibility. This is in recognition and continuation of the reputation the College has, of being the most prominent and prestigious institution for women in Pakistan.

## Mission

The Mission of Kinnaird is to provide access to an education that is holistic, of quality, relevant to context and time and one that serves personal transformation to develop women leaders, innovators and entrepreneurs who think independently, work cooperatively and act responsibly and courageously for social transformation.

Women who are able to live according to the College Oath, “To live up to the trust placed in me, willingly and conscientiously fulfill my responsibilities and to work with integrity and loyalty; to be, rather than to seem”.

## Table of Contents

Message from the Principal	02	Faculty of Arts, Design & Media Studies	32
Welcome to Kinnaird	04	Faculty of Social Sciences & Law	34
Campus Facilities	06	How to Apply for Admission	36
Library	08	Degree Requirements for Undergraduate Program	38
Accommodation	10	Fee Structure for Undergraduate Programs	40
Cafe	12	Graduate Programs	42
Extra Curricular Activities	13	Degree Requirements MS/M.Phil Programs	50
Sports	14	Fee Structure for Graduate Programs	51
Undergraduate Programs	16	Academic Rules and Regulations	52
Faculty of Applied Sciences & Business Studies	18	Student Code of Conduct	55
Faculty of Physical & Earth Sciences	22	Teaching Faculty	58
Faculty of Biological & Life Sciences	26	Administration	71
Faculty of Languages, Literature & Education	30	Academic Calendar	72





## Message from the Principal

Almost 111 years ago, Kinnaird first opened its gates for the girls of South Asia. Today, I look forward to welcoming you to this century-old house of excellence, knowledge, culture, and ethos, which will leave remarkable lasting imprints on you. When you enter Kinnaird, you don't merely enter a historical educational institution; you also choose to become a part of its glorious present, as splendid as its history.

Since 1913, Kinnaird has maintained its identity as a trailblazer. From being the *first* women's college in this region to offering four-year BS programs, being the *first* women's HEI to have a law school, offering BS Genetics, establishing an Office of Research and Commercialization (ORIC), and creating a women-only Business Incubation Center (BIC), Kinnaird has pioneered in these and many other areas. Our real success lies in the many women leaders and groundbreakers produced by Kinnaird, who have made their mark in the world, a handful of whom we could celebrate on the cover of this handbook.

Although Kinnaird offers a variety of programs to fit your specific passions, interests, and aspirations, we provide more than just education. We ensure

our students tread the path of self-discovery and self-actualization, enabling them to identify and pivot on their God-given strengths and build on areas that need development. At Kinnaird, we transform our girls into strong, courageous, independent women, full of character and grace. To me, it's a process similar to metamorphosis, where we help break open the cocoons that hold you back so beautiful butterflies emerge, who can stretch their wings to fly high and fill the world with color and wonder.

So, I invite you all, those who are sure of who they want to be and those who are still on the quest, to come and join the journey thousands have taken before you—a journey of self-actualization and deep intellectual stimulation. Let Kinnaird embrace and transform you into someone you never thought possible!

سے آنغوشِ صدف جس کے نصیبوں میں نہیں ہے  
وہ قطرۂ نیساں کبھی بنتا نہیں گومر

Prof. Dr. Iram Anjum





## Welcome to Kinnaird

Kinnaird is one of the esteemed colleges for women in Pakistan and we are proud of its history and present achievements.

The name Kinnaird comes from Lady Mary Kinnaird who belonged to a titled family of Scotland. During the British period in India, certain British philanthropic enterprises, run by educated and sometimes very wealthy women from UK, worked for the education of women in India. Education was also a significant agenda for the family of Lady Kinnaird, who was politically involved with India. Her husband and her son successively were Chairmen of the committee that spoke on Indian issues in the British parliament.

The Kinnaird family raised financial support and even donated personal funds and thus the college evolved in 1913 from within Kinnaird High School which was already in existence. Today Kinnaird ranks as a premier institution of Pakistan for education of women, where over 2000 students are enrolled every year.

The college shifted to its present location in 1938 and is home to more than 5000 girls who study at the college. The beautifully laid out gardens provide a charming setting for the twenty acre campus.





**1930**

**2024**

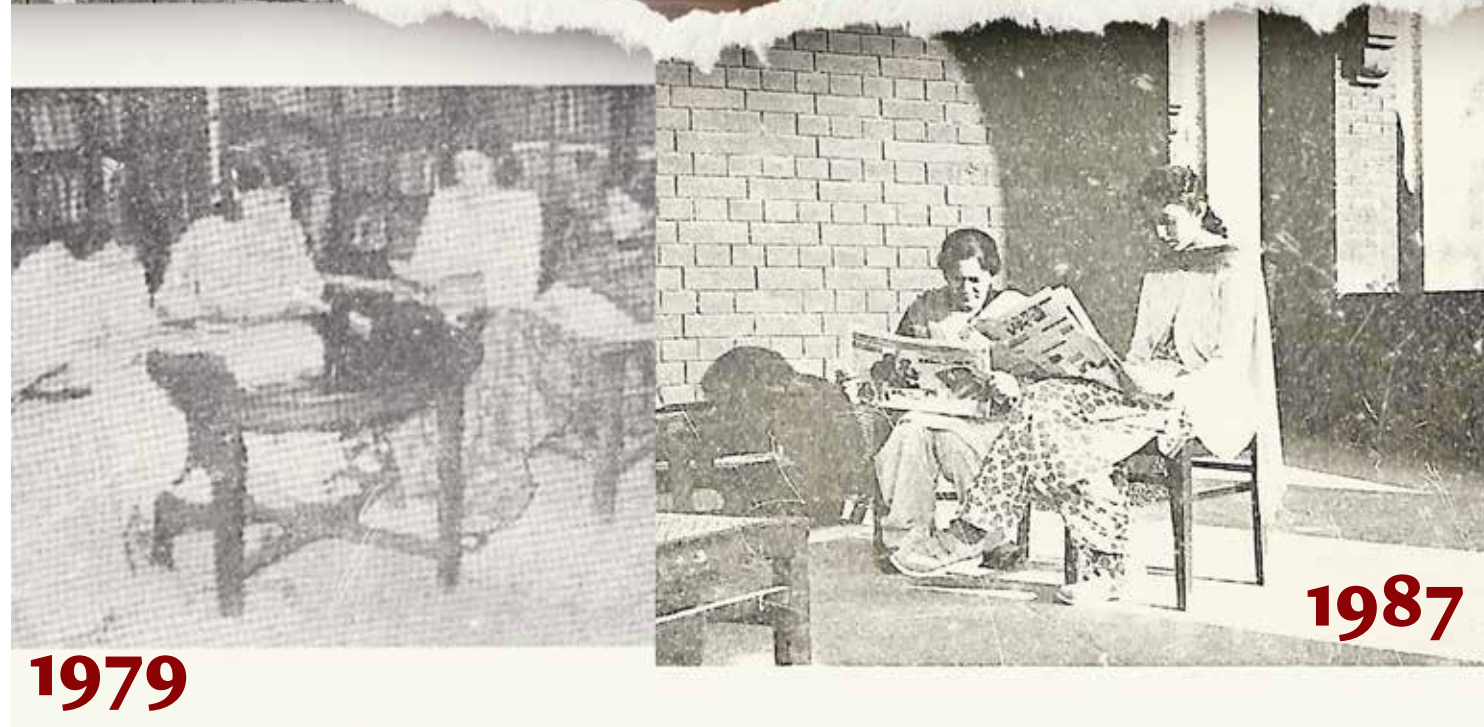
## Campus and Facilities

This campus, owned by the parent body, the Association of Kinnaird College, provides a range of spacious study spaces in the original Main Academic Building, the adjoining Amaltas Block built in 2008. The McNair Science block, the Science Block and the recently built Postgraduate Block. Most classrooms are equipped with audio visual aids such as overhead projectors and LEDs. There are well equipped science and computer laboratories with access to the Internet and the Higher Education Commission digital library.





2024



1987

1979

## Library

Kinnaird Library provides a dynamic and interactive learning environment with its innovative and instructional programs, resources and services for faculty and students. Kinnaird Library holds a collection of more than 42000 books and connectivity to over 20,000 journals and e books across all subject areas. A computer section is built giving access to e-resources with in the library premises to fulfill the research needs of our future scholars.

A fully equipped special students lab with Braille books and Braille machines for visually impaired students is a valuable and remarkable addition in Kinnaird Library services. The Postgraduate Library caters to students at the graduate level and has the latest books on a wide range of disciplines. Kinnaird Library is a knowledge hub and door to independent learning for students and faculty members.



2024





1938

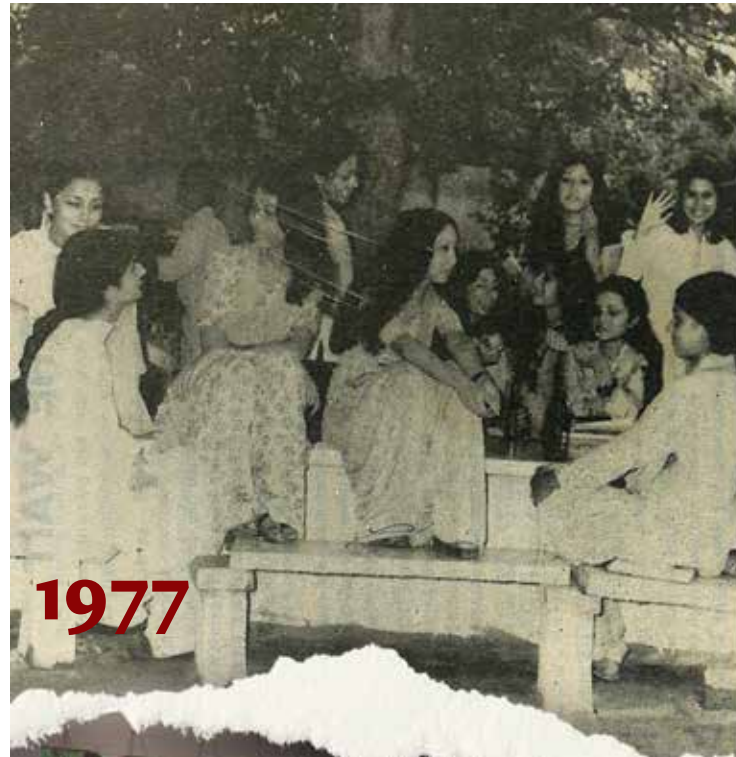
1999

## Accommodation

Residential facilities are available to students in three hostels custom built for the purpose. Apart from dormitories, each of the three hostels provides bedrooms for triple, double or single occupancy and its own common room. A central dining room is provided for the residents of all three hostels.







1977

## Café

The Kinnaird Association runs the KC Cafeteria which provides an area both indoors and outdoors where students can relax and enjoy their meal. Students can choose from a variety of food items and enjoy freshly made-to-order snacks with their favorite beverage.



2024



2024



1952

## Extra Curricular Activities

Along with providing excellent teaching facilities to students, Kinnaird adds an extra dimension by providing them an opportunity to become members of the student council, and the clubs and societies of the college. Students participate in a wide range of activities that exemplify the diversity of interests and talents within the college community and help students to be creative, develop their confidence, take initiatives and be prepared for real life situations.



1934

2024





## Sports

Kinnaird provides high quality sports facilities and offers a blend of opportunities to compete, lead, and contribute to the community. Kinnaird is one of the largest sports nurseries for producing and grooming sports women to represent Pakistan in Olympics, World Cup, Islamic Games, Common Wealth Games, ICC Championships, Asian Games, SAF Games and other mega events. Kinnaird hosted the first international T20 blind women cricket series between Nepal and Pakistan in 2019. A variety of sports facilities including cricket, hockey, basketball, football, table tennis, badminton, lawn tennis and fitness center are available at campus. The college is proud of its athletes who bring honor and glory to their alma mater by taking top positions in intercollegiate, interprovincial, national and international competitions.

### Sports Achievements for the years 2023-2024

- More than 25 Women athletes represented Pakistan at International level.
- Amal Muneeb won Gold Medal in HEC Intervarsity Badminton Championship
- Sadia Iqbal ranked number 04 in ICC Women T-20 Bowling Ranking
- Kinnaird in collaboration with the Australian High Commission organized 5th edition of the Girls Cricket Cup.





# Undergraduate Programs

## Faculty of Applied Sciences & Business Education

BS Accounting & Finance  
Bachelor of Business Administration  
Bachelor of Computer Science  
BS Economics  
BS Mathematics  
BS Statistics

## Faculty of Languages, Literature & Education

BS Applied Linguistics  
Bachelor of Education  
BS English Language & Literature  
BS Urdu Literature

## Faculty of Physical & Earth Sciences

BS Chemistry  
BS Environmental Sciences  
BS Geography  
BS Physics

## Faculty of Arts, Design & Media Studies

Bachelor of Fine Arts  
Bachelor of Design  
BS Media Studies

## Faculty of Biological & Life Sciences

BS Biochemistry  
BS Biotechnology  
BS Botany  
BS Horticulture  
BS Food Science & Human Nutrition  
BS Genetics  
BS Zoology

## Faculty of Social Sciences & Law

BS Applied Psychology  
BS International Relations  
BS Political Science  
BS Sports Sciences and Physical Education  
Bachelor of Laws



## Faculty of Applied Sciences & Business Education

1960



2024

### **BS Accounting & Finance**

The Bachelor's program in Accounting and Finance provides students with essential skills to understand and participate in the complex process of identifying, measuring, and communicating financial information. Utilizing a variety of accounting tools like financial statements and cash flow analyses, students learn to present financial data effectively, aiding stakeholders in making informed decisions. Going beyond theory, the curriculum emphasizes practical application through real-world scenarios, including case studies, internships, and collaborative projects. The program also focuses on honing analytical and critical thinking abilities.

Central to the program is the development of ethical and professional values, emphasizing integrity, honesty, and transparency in financial reporting and decision-making. Graduates of the program are prepared for diverse career paths in banking, consulting, auditing, taxation, and financial analysis. Furthermore, the program provides a solid foundation for further education in emerging fields like cloud computing, block chain, and data analytics, which are poised to transform financial reporting and decision-making processes

### **Admission Requirement**

- FA/F.Sc Part-I with minimum 60% marks OR A-level in three main subjects (no subsidiary) with minimum Grade B (60%) with Equivalence Certificate OR Grade 12 with minimum Grade B (60%) with Equivalence Certificate.
- Candidates must appear for an Interview.

### **Bachelor of Business Administration**

The Bachelor of Business Administration degree prepares students to operate effectively in the business world of today and to meet the demands of the future. This degree provides

students with knowledge, skills and attitude to engage effectively with the unprecedented challenges facing the world today such as emerging environmental concerns, international financial markets' volatility, electronic commerce and intense global competition among others. Specialization, flexibility and a global approach to new opportunities characterize the way business operates. We integrate theory with practice, combine classroom teaching with actual management practice providing a broad spectrum of knowledge and skills required for business management. This approach enhances competence, problem-solving skills, critical thinking, analytical abilities, presentation skills and creativity. The multi-dimensional training our students receive enables them to become proficient, skilled, confident, resourceful and result-oriented professionals who can excel in leadership roles in today's highly competitive environment.

### **Admission Requirement**

- FA/F.Sc Part-I with minimum 60% marks OR A-level three main subjects (no subsidiary) with minimum Grade B (60%) with Equivalence Certificate OR Grade 12 with minimum Grade B (60%) with Equivalence Certificate.
- Candidates must appear for an Interview.

### **Bachelor of Computer Science**

In today's world, software development is a booming field, impacting nearly every aspect of our lives. From information access to enhanced problem-solving and improved work environments, well-designed software is crucial. The BS Computer Science program offers students the knowledge and skills to thrive in this dynamic field. Our program offers a comprehensive curriculum that balances theory with practical experience, fostering critical thinking and professional intuition. Students will delve into



core concepts, techniques, and the underlying theory of computer science, preparing them to tackle complex problems and design effective solutions.

This program incorporates modern tools and technologies and emphasizes both individual and teamwork skills to prepare students for success in collaborative environments. Effective communication is paramount, and the program equips students to clearly convey technical ideas. Our graduates are not only technically proficient but also uphold ethical principles and social responsibility within the computing profession. The BS Computer Science program provides a strong foundation for lifelong learning, ensuring students can adapt and evolve in this rapidly changing field. This program empowers students to become well-rounded computer science professionals, capable of assuming responsible roles in software development, testing, research, and planning within various organizations. It also serves as an excellent springboard for further academic pursuits.

#### **Admission Requirement**

- F.Sc Part I with Pre Engineering / Pre Medical/ ICS Stats / ICS Physics with minimum 60% marks OR A-level in three main subjects (no subsidiary) with minimum Grade B (60%) with Equivalence Certificate and must have studied Mathematics.
- Candidates must appear for an Aptitude Test.

**Note:** All students with F.Sc Pre Medical background must pass deficiency courses of Mathematics of 6 credit hours within one year

#### **BS Economics**

BS in Economics at Kinnaird College is one of the most sought after undergraduate degrees in the discipline of Economics. It is a

comprehensive degree that trains students in qualitative, quantitative and analytical skills. Degree in Economics broadens the horizon and efficaciously prepares students for multiple options for post-graduate studies. Our graduates successfully secure admissions in well reputed local and foreign universities for post-graduate degrees. Furthermore, their analytical acumen and flexibility equip them with an impressive skillset that makes them an attractive choice for a wide range of employers in both private and government sectors.

The Department of Economics is devoted to restructuring its coursework with time in order to incorporate the dynamic, contemporary economic spectrum in its curriculum. Also, it is committed to organizing seminars and workshops to keep the students updated on the latest trends and robust changes in the field of economics. The Department offers an enabling learning environment based on interactive teaching, mentorship and linkages with other institutions and market. The premium is placed on students' wellbeing and development as well rounded and responsible economic professionals and scholars.

#### **Admission Requirement**

- FA/F.Sc Part-I with minimum 60% marks OR A-level in three main subjects (no subsidiary) with minimum Grade B (60%) with Equivalence Certificate OR Grade 12 with minimum Grade B (60%) with Equivalence Certificate.
- Candidates must appear for an Interview.

#### **BS Mathematics**

Mathematics plays an important role in the world today which is now undergoing a revolution driven largely by technology. Business and government, science and technology and almost every aspect of professional work involves mathematics. The B.Sc. Mathematics program at Kinnaird College

is designed to set high standards in graduate level mathematics education and helps students to attain the ability to think logically, analyze complex situations and conduct research. Advanced courses in mathematics are the strength of this program, supported by highly competent faculty members. All that is required on the part of the student is genuine interest in mathematics and hard work.

In our BS Mathematics program, students will gain hands-on experience with industry-leading software tools, including Mathematica, LaTeX, MATLAB, Python, and SPSS. These powerful tools are vital for mathematical modeling, data analysis, and scientific computing, and they are widely used in fields such as mathematics, physics, engineering, and data science. By mastering these tools, students will build a robust foundation in mathematics, unlocking countless opportunities in research, academia, and industry.

#### **Admission Requirement**

- F.Sc Pre-Engineering/ICS Part-I with minimum 60% marks OR A-level in three main subjects (no subsidiary) with minimum Grade B (60%) with Equivalence Certificate OR Grade 12 with minimum Grade B (60%) with Equivalence Certificate.
- Candidates must have 60% marks in Intermediate/ A Level Mathematics.
- Candidates must appear for an Interview.

#### **BS Statistics**

The subject of Statistics is widely applicable in all areas of science, engineering, technology, business, industry and commerce. Throughout many businesses and industries, statistical and operations research methods are used to solve problems such as resource allocation, planning and forecasting future requirements. Statistical models are often developed to assist in predicting the evolution of many phenomena including

production, planning, bio-medical aspects, weather patterns and climate change. In the business sector, decisions on future strategies usually depend on the forecast of economic and financial trends that are generated from statistical models of the market phenomena. In today's technology-driven era, there is a rising demand in the job market for data analytics which requires skills and expertise in data handling, data analysis and interpretations conducive to appropriate business decisions. The content of the data analytics courses within the BS Program in Statistics will focus on topics such as Data Visualization, Data Mining, R, Python and Machine Learning which will inculcate in the students skills and competencies that will enable them to play a pivotal role in their professions as they advance in their careers.

#### **Admission Requirement**

- FA/F.Sc Part-I with minimum 55% marks OR A-level in three main subjects (no subsidiary) with minimum Grade C with Equivalence Certificate OR Grade 12 with minimum Grade C with Equivalence Certificate.
- Candidates must have 55% marks in Intermediate/ A Level Mathematics.
- Candidates must appear for an Interview.





## Faculty of Physical & Earth Sciences

### BS Chemistry

This program introduces students to the basics and the latest developments in the field of chemistry. All major chemistry courses are supported with practicals in the lab to reinforce the concepts studied in theory and to develop further understanding of the subject. The courses are taught by a combination of lectures, tutorials, seminars, practical activities, visits to relevant laboratories, industries and research organizations. The students undertake internships in concerned organizations during the summer vacations in the final year to acquire work experience. The program of study is designed to prepare students for higher learning in this field; to work as professionals with an ability to classify the elements of chemistry and applications thereof, in academia or in chemical, petrochemical, metallurgical, ceramic, biomedical industries and in research institutions.

### Admission Requirement

- F.Sc Part-I with minimum 60% marks OR A-level in three subjects three main subjects (no subsidiary) with minimum Grade B (60%) with Equivalence Certificate OR Grade 12 with minimum Grade B (60%) with Equivalence Certificate
- Candidates must appear for an Interview.

### BS Environmental Sciences

Environmental Sciences is an interdisciplinary field which studies the interaction of human systems and the environment and ways to combat environmental problems in order to live more sustainably. Today the world is faced with pressing environmental challenges such as climate change, air and water pollution, food

security, waste disposal, global warming, soil contamination, biodiversity loss, urban sprawl, and many others which have affected every living organism on the earth. The department aims to raise awareness regarding environmental issues and produce dynamic young environmentalists and scholars with professional expertise in the field of Environmental Sciences.

The 4 years' undergraduate degree program will help students gain an in-depth understanding of contemporary environmental issues and challenges in order to develop human resource equipped with knowledge and necessary skills to address the same and contribute towards sustainable development. The program has been designed to deliver the students with concepts, methods and practical field experience in air quality, water quality assessment, endangered species management, industrial hygiene, environmental policy, environmental pollution, impact assessment and pollution control technologies. The degree prepares the students for employment at entry-level positions in government sector, private industry, environmental consulting firms/Industries/NGOs, regulatory agencies, teaching and other areas as well as equips them with solid foundation for pursuing higher studies at well reputed National and International institutions.

### Admission Requirement

- F.Sc Part-I with minimum 60% marks OR A-level in three main subjects (no subsidiary) with minimum Grade B (60%) with Equivalence Certificate OR Grade 12 with minimum Grade B (60%) with Equivalence Certificate
- Candidates must appear for an Interview.





### BS Geography

Geography as a discipline embodies an intrinsic curiosity about the world around us. It encourages students to investigate a broad range of themes, including climate change, population dynamics, urban development, resource management, environmental sustainability, political landscapes, economic systems, and the spatial distribution of various phenomena. By studying geography, students acquire the tools to explore not only the physical and cultural characteristics of different places but also the interconnectedness between these places and the processes that shape them.

A key aspect of the BS Geography program is the emphasis on spatial analysis. Effective communication of geographical knowledge, both orally and in written form, is emphasized to enable geographers to convey complex concepts to diverse audiences, bridging the gap between academia and the wider society. The interdisciplinary nature of geography makes it a versatile degree choice. Graduates with a BS in Geography can pursue diverse career paths. They may find opportunities in government agencies, environmental consulting firms, non-profit organizations, urban and regional planning, market research, transportation, GIS analysis, climate change research, and international development, among others. Moreover, the skills acquired through the study of geography, such as critical thinking, spatial analysis, and problem-solving, are highly transferable and can be applied in various sectors.

### Admission Requirement

- FA/F.Sc Part-I with minimum 55% marks OR A-level in three main subjects (no subsidiary) with minimum Grade C with Equivalence Certificate OR Grade 12 with minimum Grade C with Equivalence Certificate.
- Candidates must appear for an Interview.

### BS Physics

Physics is an important and one of the basic sciences in the world under natural philosophy. It has an extensive use in different fields of life for various purposes. Our teachers are at the fore front of latest developments in range of Physics. The staff is fully qualified and eager to get involved and help students where needed. Our graduates are equipped with knowledge needed for wide range of career paths.

The dynamic four years program covers a wide range of courses from classical and quantum physics to the latest techniques of applied physics and electronic devices. The courses are developed on concept learning and problem solving skills. Lab work will educate the students and promote the understanding of Physics. With emerging research aptitude, our courses offer an intellectual challenge and provide the students with practical skills and ability to solve real life problems.

### Admission Requirement

- F.Sc Pre Engineering / Pre Medical / ICS Physics Part-I with minimum 60% marks OR A-level in three main subjects (no subsidiary) with minimum Grade B (60%) with Equivalence Certificate OR Grade 12 with minimum Grade B (60%) with Equivalence Certificate
- Candidates should have studied mathematics in Intermediate /A-Levels.
- Candidates must appear for an Interview.





## Faculty of Biological & Life Sciences

### BS Biochemistry

The department strives to instill basic knowledge of Biochemistry among the students. It specifically teaches biochemical mechanisms operating in a living system at molecular level that can be applied in daily life scenarios. The department imparts the skills of leadership, practical knowledge and innovation amongst its students in order to make them serve in various sectors of health, agriculture, industry and education. The elaborative course contents and impactful teaching methodologies develop high quality training in the rapidly growing fields of science. Success of Biochemistry has led the biochemists to develop new technologies in vast areas of biological sciences. It is no surprise that this field not only interests a large number of people but also offers various career opportunities in research organizations, academics and industries.

### Admission Requirement

- F.Sc Part-I (Pre Medical) with minimum 60% marks OR A-level in three main subjects (no subsidiary) with minimum Grade B (60%) with Equivalence Certificate OR Grade 12 with minimum Grade B (60%) with Equivalence Certificate
- Candidates must appear for an Interview.

### BS Biotechnology

Biotechnology is a highly interdisciplinary field that combines biological sciences with engineering technologies to produce products that advances healthcare, medicine, agriculture, food, pharmaceuticals and environment control. It draws heavily from a number of biological science disciplines such as Microbiology, Biochemistry, Genetics, Molecular Biology, Immunology, Cell and Tissue Culture etc. for understanding the

occurrence and treatment of diseases, development of agriculture, food production, protection of the environment and many more. The B.Sc. honors program in Biotechnology at Kinnaird equips its graduates with the necessary intellectual and practical skills as well as required theoretical knowledge to begin careers in medical research, in hospital and public health laboratories, and also in the pharmaceutical, food and agricultural industries.

### Admission Requirement

- F.Sc Part-I (Pre Medical) with minimum 60% marks OR A-level in three main subjects (no subsidiary) with minimum Grade B (60%) with Equivalence Certificate OR Grade 12 with minimum Grade B (60%) with Equivalence Certificate
- Candidates must appear for an Interview.

### BS Botany

Botany uses an applied approach that begins with molecular details in biochemistry and ends with cellular details in cell biology to give students a comprehensive understanding that will develop a critical insight into the specialized areas of plant sciences. It will be possible to comprehend the fascinating processes of plants, including their growth, development, anatomy, morphology, taxonomy, chemical properties, genetics, ecology, and evolution, by taking a botany course called Fundamental Introduction.

Plants employ various techniques to identify external stressors. Environmental stress alters many physiological processes in plants and interferes with their growth and development by affecting ion transport, protein or RNA stability, and other cellular functions. By studying plant physiology, students can find solutions to these





problems. New areas of research include Forensic Botany, which uses plants to find traces of criminal activity, Economic Botany, which studies the use of the plant kingdom, and Genetic Engineering, which tackles the issue of Genetically Modified Organisms (GMOs). Among the busiest and most practical fields in which the research will be done are plant tissue culture, biotechnology, eco-physiology, plant physiology, biochemistry, plant pathology, plant anatomy, and environmental biology.

#### **Admission Requirement**

- F.Sc (Pre Medical) Part-I with minimum 60% marks OR A-level in three main subjects (no subsidiary) with minimum Grade B (60%) with Equivalence Certificate OR Grade 12 with minimum Grade B (60%) with Equivalence Certificate.
- Candidates must appear for an Interview.

#### **BS Horticulture**

In order to solve global issues like public health, environmental sustainability, and food security, horticulture - the science of growing plants for human use - is essential. This program seeks to deepen students' understanding of the interrelationships between humans, plants, and the environment while providing them with the tools to tackle today's most pressing issues. The program promotes resource-efficient practices, increases yields, and diversifies crop production to provide solutions. Horticulture also offers opportunities for fulfilling careers, particularly for women, and makes a significant contribution to rural development and economic growth.

Kinnaird College wants to give students the tools they need to pursue careers in research, agribusiness, landscaping, floriculture, and agriculture. Through a comprehensive education that includes soil science, plant biology, crop production, and pest management, the program

equips students to address difficult problems like environmental conservation and food security. All things considered, the BS in Horticulture is in line with the college's dedication to social responsibility, innovation, and academic brilliance.

#### **Admission Requirement**

- F.Sc (Pre Medical) Part-I with minimum 60% marks OR A-level in three main subjects (no subsidiary) with minimum Grade B (60%) with Equivalence Certificate OR Grade 12 with minimum Grade B (60%) with Equivalence Certificate.
- Candidates must appear for an Interview.

#### **BS Food Science & Human Nutrition**

The curriculum is designed to provide students with a solid foundation in food and nutritional sciences so as to equip them to face current challenges related to food, nutrition & health. The program focuses on building and developing skills amongst students by promoting participation in experiential learning projects and helping them prepare for active involvement in local and global issues related to food and nutrition. The program also addresses critical issues such as nutrition for limited resource audience which is very critical in the perspective of Pakistan.

Kinnaird College for Women, Lahore was amongst the first educational institution to start a BSc.(Hons.) program in Food Science & Human Nutrition in Pakistan. This unique combination of Food Science and Human Nutrition prepares our students for a large variety of career opportunities which includes hospitals, institutional foodservice, airline catering, food industry and entrepreneurs are just a few to mention. Our alumni are employed in reputed organizations and are seen working successfully in various spheres which include Community Educators, R & D Industry, Academia, Consultant Nutritionists, Dietitians, Food Authority, Centre of Peace and Development Initiative, Centre of Research and

Policy Development, Nutrition Subject Specialist, Campus Nutrition Counselor, Food Service Manager, Expert for development of Nutrition Curriculum at primary level.

#### **Admission Requirement**

- F.Sc Part-I (Pre Medical)/BS Part-I from home economics with minimum 60% marks OR A-level in three main subjects (no subsidiary) with minimum Grade B (60%) with Equivalence Certificate OR Grade 12 with minimum Grade B (60%) with Equivalence Certificate.
- Preference will be given to the students who have studied Food Science & Nutrition in O/A Level.
- Candidates must appear for an Interview.

#### **BS Genetics**

Genetics is one of the most fascinating fields that have emerged in the 21st century. The study of human DNA is not only intellectually fascinating, but it also has plenty of practical applications, from the use of DNA in court cases to the discovery of new therapies for genetic diseases, a thorough understanding of the human genome can have important medical, social and legal impacts. Pakistan is an agriculture based economy, thus research and understanding of genetics is inevitable for sustainable growth and health of our crops and cattle. Our country is amongst the worst hit countries with genetics disorders like thalassaemia, hereditary deafness, blindness etc. Graduates from this degree will have better understanding of our genomes and will harness vast research opportunities in this field nationally and internationally. Having a deeper understanding and solid foundation of genetics, its graduates will also help create awareness among our population.

#### **Admission Requirement**

- F.Sc Part-I (Pre Medical) with minimum 60% marks OR A-level in three main subjects (no

subsidiary) with minimum Grade B (60%) with Equivalence Certificate OR Grade 12 with minimum Grade B (60%) with Equivalence Certificate

- Candidates must appear for an Interview.

#### **BS Zoology**

Bachelors in Science started in Kinnaird College in the mid-fifties of the last century. It was taught as a major subject along with Chemistry and Botany. However, with the advent of modern technology, the field of Zoology was enhanced and incorporated more diverse and interdisciplinary subjects of Biotechnology, Biochemistry, Environmental Sciences, Toxicology and ecological -conservation along with the conventional Invertebrate Diversity, Vertebrate Diversity, Evolution and Taxonomy. Furthermore, the program at Kinnaird seeks to equip the students with knowledge of Ornithology (study of Birds), Herpetology and Mammalogy. It also seeks to facilitate an understanding of animal biodiversity, Ecology, fisheries and teach students the Zoological techniques required in such fields as Biotechnology and Genetic Engineering.

Graduates from the department are well prepared for higher studies in Zoology or related disciplines and have been accepted abroad in universities and research organizations. They seek jobs in schools and colleges, in diagnostic laboratories, in research centers or Zoological Gardens as Biodiversity Conservationists. They can even become self-employed in applied fields of poultry, Sericulture and Aquaculture.

#### **Admission Requirement**

- F.Sc Part-I (Pre Medical) with minimum 55% marks OR A-level in three main subjects (no subsidiary) with minimum Grade C with Equivalence Certificate OR Grade 12 with minimum Grade C with Equivalence Certificate
- Candidates must appear for an Interview.



# Faculty of Languages, Literature & Education

## BS Applied Linguistics

This four-year degree program offers an inclusive range of major courses related to the field of contemporary research trends in Applied Linguistics and pedagogy. The BS Honors in Applied Linguistics program envisages enhancing students' understanding of current issues in the field of Applied Linguistics. Subject areas in this degree program complement a wide range of subjects, including Historical Linguistics, Artificial Intelligence & Language, Phonetics & Phonology, Syntax, Discourse Analysis, Psycholinguistics, Semantics, Pragmatics, Computational Linguistics, Integrated Language Skills, Natural Language Processing, Sociolinguistics and Forensic Linguistics.

### Admission Requirement

- FA/F.Sc Part-I with minimum 60% marks OR A-level in three main subjects (no subsidiary) with minimum Grade B (60%) with Equivalence Certificate OR Grade 12 with minimum Grade B (60%) with Equivalence Certificate
- Candidates must appear for an Aptitude Test.

## Bachelor of Education

The four-year B.Ed. Honors program is designed for students seeking rigorous training to become teachers. The B.Ed. Honors program will train students to excel as teachers as well as understand the intricacies of teaching such as teaching methodologies, classroom management, foundations of education, guidance and counseling, classroom assessment, and psychology of learning among other topics. This is an interdisciplinary program that highlights the relationship between the field of education and other disciplines that influence the process of teaching and learning. Furthermore, students will also become familiar

with the educational policies that impact the implementation of educational programs. Students in the program will have practical experience in the classroom under supervision to gain practical knowledge of the theories they have studied in earlier semesters. Practicum is mandatory for every student. Students will conduct research in the field of education under the supervision of their supervisors.

In addition to the knowledge and practice in the selected discipline Kinnaird College emphasizes critical thinking, tolerance and a sense of civic and social responsibility for the development of our students.

### Admission Requirement

- FA/F.Sc Part-I with minimum 60% marks OR A-level in three main subjects (no subsidiary) with minimum Grade B (60%) with Equivalence Certificate OR Grade 12 with minimum Grade B (60%) with Equivalence Certificate
- Candidates must appear for an Interview.

## BS English Language & Literature

This dynamic program spread over four years provides students with a vast exposure to various genres of English literature from medieval age till the present time. It engages with writers, critics and theorists from all over the globe, with a special emphasis on Post-colonial, South Asian and Pakistani English works. The program is innovative and demanding that inculcates in-depth analytical reading and writing skills in the students. It culminates in a high level research dissertation that enhances students' abilities to present creative ideas, develop independent research and integrate interdisciplinary projects in the community as socially responsible citizens.

## Admission Requirement

- FA/F.Sc Part-I with minimum 60% marks OR A-level in three main subjects (no subsidiary) with minimum Grade B (60%) with Equivalence Certificate OR Grade 12 with minimum Grade B (60%) with Equivalence Certificate.
- All Candidates must appear for an Aptitude Test and only short listed candidates will be called for the Interview.

## BS Urdu Literature

The Department of Urdu envisions to create a Centre of Excellence for the dissemination of knowledge pertaining to literature and its related fields by enlightening the students for their development of creative, interceptive, critical and

research abilities through inter literary and inter disciplinary awareness. The Department of Urdu focus on producing knowledgeable, enlightened and well trained graduates and well versed female students for roles in fields of academia, research, translation, educational and non-educational institutions by inculcating knowledge of literary task and skills of interest articulation.

### Admission Requirement

- FA/F.Sc Part-I with minimum 55% marks OR A-level in three main subjects (no subsidiary) with minimum Grade C with Equivalence Certificate OR Grade 12 with minimum Grade C with Equivalence Certificate
- Candidates must appear for an Interview.





# Faculty of Arts, Design & Media Studies

## Bachelor in Fine Arts

(Painting, Miniature Painting)

This 4-year studio intensive degree program aims to develop in the students' skill and experience of a range of art techniques and processes, not merely limited to technical ability, but skill in seeing and expressing from an aesthetic and critical perspective. It begins with foundation courses for the first two semesters where the students are introduced to the basics of Drawing, 3D Studio and Design. In the third semester students experience the two specializations offered as major i.e., Painting and Miniature Painting of which they are required to choose one as their major. The next five semesters are dedicated to the study and practice of these chosen specialization. Along with studio-based courses the program also develops historical and cultural perspective through theoretical courses.

### Admission Requirement

- FA/F.Sc Part-I with minimum 50% marks OR A-level in three main subjects (no subsidiary) with minimum Grade C (50%) with Equivalence Certificate OR Grade 12 with minimum Grade C (50%) with Equivalence Certificate
- All applicants must appear for an aptitude test based on drawing ability.
- An interview and portfolio review of previous work will be conducted of the short-listed applicants.

## Bachelor of Design

(Textile Design)

The Bachelor of Design (Textile Design) is a dynamic 4-year program designed to foster students' artistic and conceptual thinking alongside

practical skills required by the industry. The first year begins with foundational courses spanning two semesters, covering Drawing, Design, 2D Drafting & Modeling, 3D Studio, and theory courses. In the third and fourth semesters, Textile Design students delve into Digital Art, core Textile Design courses, and Fashion courses such as industrial print design, conceptual Textile, knitting, stitching, pattern making, weaving, fiber dyeing, entrepreneurship, and Textile marketing. Semesters 5 and 6 focus on advanced Textile Design and Fashion courses aimed at developing analytical, conceptual, and technical skills necessary for global creative ventures. Students also gain exposure to Textile Merchandizing, Eco Textile Manipulation, Sustainable Textile, Tec pack, digital apparel collection, and interdisciplinary courses, including a mandatory industry internship. In semester 7, students engage in Capstone Project 1, along with Apparel visualization, research methodology, design intervention, textile product development, and product merchandising. Finally, semester 8 culminates with students selecting their self-initiated Textile Thesis project, which is showcased at the end of the semester.

### Admission Requirement

- FA/F.Sc Part-I with minimum 50% marks OR A-level in three main subjects (no subsidiary) with minimum Grade C (50%) with Equivalence Certificate OR Grade 12 with minimum Grade C (50%) with Equivalence Certificate
- All candidates must appear for an aptitude test based on drawing and design ability. An interview and portfolio review of previous work will be conducted of the short listed candidates.

## BS Media Studies

The Bachelor degree in Media Studies offered by Kinnaird Media School is a highly rigorous and wide-ranging program for those students who are confident in their ability to become a successful part of the media industry. Our program is highly practice-oriented, providing hands-on training to our students in the areas of their interest. It offers solid foundations in all aspects of the media, as we unravel the world of the media from the general to the specific, from the theoretical to the practical,

with research work and special projects; all with the aim to put our students at the top of the media scene once they step out in the real world.

### Admission Requirement

- FA/F.Sc Part-I with minimum 60% marks OR A-level in three main subjects (no subsidiary) with minimum Grade B (60%) with Equivalence Certificate OR Grade 12 with minimum Grade B (60%) with Equivalence Certificate
- Candidates must appear for an Interview.





# Faculty of Social Sciences & Law

## BS Applied Psychology

The 4-year B.Sc Honors program in Applied Psychology aims to provide students with a well-rounded knowledge base and application in the domains of Applied Psychology. The curriculum is designed to introduce students to the theories of psychology and their application. The program focuses on experiential teaching so students can relate the concepts to practice. Students are required to conduct a research project under the supervision of a faculty. The experience of conducting the research and writing the research report hones students' research skills. Students are expected to complete their internship during the summer and document their learning and experience in the form of a report.

### Admission Requirement

- FA/F.Sc Part-I with minimum 60% marks OR A-level in three main subjects (no subsidiary) with minimum Grade B (60%) with Equivalence Certificate OR Grade 12 with minimum Grade B (60%) with Equivalence Certificate
- Candidates must have 60% marks in psychology in F.A/A-Level or 60% marks in biology in F.Sc/A-Level.
- Candidates must appear for an Interview.

## BS International Relations

The Bachelor in International Relations (IR) is an interdisciplinary undergraduate major focusing on the changing political, economic and socio-cultural relations within the international system of the modern era. The program explores how global, regional, and domestic factors influence relations between actors on the world stage. It seeks to provide students with an understanding

of the global system's past, the tools to function effectively in the present, and the ability to respond to future developments.

### Admission Requirement

- FA/F.Sc Part-I with minimum 60% marks OR A-level in three main subjects (no subsidiary) with minimum Grade B (60%) with Equivalence Certificate OR Grade 12 with minimum Grade B (60%) with Equivalence Certificate
- Candidates must appear for an Interview.

## BS Political Science

The Bachelors Program in Political Science considers the subject from a political, philosophical and historical point of view. It emphasizes the importance of political thought in the past in shaping the ideas and circumstances that affect national and international politics. It facilitates students in understanding constitutions and the rule of law, government, distributive justice, public interest groups, human rights, the economy and economic development from a political point of view and the politics of the environment. Emphasis is placed on the study of conflict and conflict resolution and defense and diplomatic studies. Students are also facilitated in undertaking a critical analysis of the dynamics of local, regional and international politics.

### Admission Requirement

- FA/F.Sc Part-I with minimum 60% marks OR A-level in three main subjects (no subsidiary) with minimum Grade B (60%) with Equivalence Certificate OR Grade 12 with minimum Grade B (60%) with Equivalence Certificate
- Candidates must appear for an Interview.

## BS Sports Sciences & Physical Education

The 4-year BS Sports Science and Physical Education program consists of 130 credit hours aims to foster both theoretical and practical understanding of sports, physiology, physical activity, and health, alongside skill acquisition. This comprehensive curriculum equips students with insights into the factors influencing human performance, with a particular emphasis on sports psychology, covering areas such as behavior and motivation. Upon completion of the four-year BS Sports Science and Physical Education program, graduates will possess the ability to integrate a broad and cohesive theoretical and technical knowledge of health, physical education, and exercise with advanced expertise. Employment opportunities for graduates may include roles as professional coaches, sports directors, exercise specialists, and sports development officers in both urban and regional settings.

### Admission Requirement

- FA/F.Sc Part-I with minimum 50% marks OR A-level in three main subjects (no subsidiary) with minimum Grade B (60%) with Equivalence Certificate OR Grade 12 with minimum Grade B (60%) with Equivalence Certificate
- Candidates must appear for an Interview.

## Bachelor of Laws

In response to the growing popularity of legal studies and the significant career opportunities the profession offers, Kinnaird College felt a compelling need to introduce a Bachelor's level law program, specifically tailored for young women. This initiative underscores the college's commitment to empowering female students in a

field that offers vast potential.

This LL.B (Hons) program is a comprehensive five-year degree program designed to provide students with a challenging and rigorous interdisciplinary education in law and its associated fields. While the focal point of the curriculum is the Pakistani legal system, it employs a critical and comparative teaching approach to broaden student perspectives and sharpen their analytical skills. The Nadira Hassan Law Department offers an extensive curriculum that focuses on skill development in areas such as legal writing, drafting, advocacy, and legal argumentation. Notably, Kinnaird holds the distinction of being the first women-only law college in Punjab, offering intensive legal study and research opportunities.

### Admission Requirement

- Completion of FA/F.Sc Part-I with minimum 60% marks OR A-level in three main subjects (excluding subsidiaries) with minimum Grade B (60%) with Equivalence Certificate OR Grade 12 with minimum Grade B (60%) with Equivalence Certificate.
- Candidates must appear for an interview.

Note: Applicants are required to pass the Law Admission Test (LAT) conducted by the Higher Education Commission (HEC) with minimum 50% marks prior to the closing date of registration.

### Degree Requirements

The LL.B (Hons) program is a 5-year program which spans over 10 regular semesters. To be awarded the LL.B (Hons) degree, students must complete 166 credit hours and achieve a minimum CGPA of 2.50.



## How to Apply for Admission

All admissions to Kinnaird College for Women are based on merit. Previous academic performances are taken into account for admission on “open merit” and also for any category within “reserved seats”. A separate form must be used for each category and the chosen option clearly indicated on each admission form. Applicants must ensure all relevant documents listed in the forms are attached.

## Reserved Seats Quota

In accordance with the admission policy limited seats are reserved for the following categories:

1. Disabled Persons
2. Religious Minority seats
3. Provincial seats
4. Balochistan
5. Sports

01

### Disabled Persons

Applicants for admission in this category must submit disability certificate, medical reports and other relevant documents.

02

### Religious Minority Seats

Applicants for admission on religious minority seats such as Christians, Hindus, Sikh, Ahmedis and Parsis must provide supporting documents.

03

### Provincial Seats

Applicants for admission on Provincial seats must have obtained their schooling and passed the board examination from the province of their domicile. They must submit their nominations through the provincial government of their domicile.

04

### Balochistan

Applicants for admission on Balochistan seats must have obtained their schooling and passed the board examination from the province of their domicile. They must submit their nominations through the provincial government of their domicile.

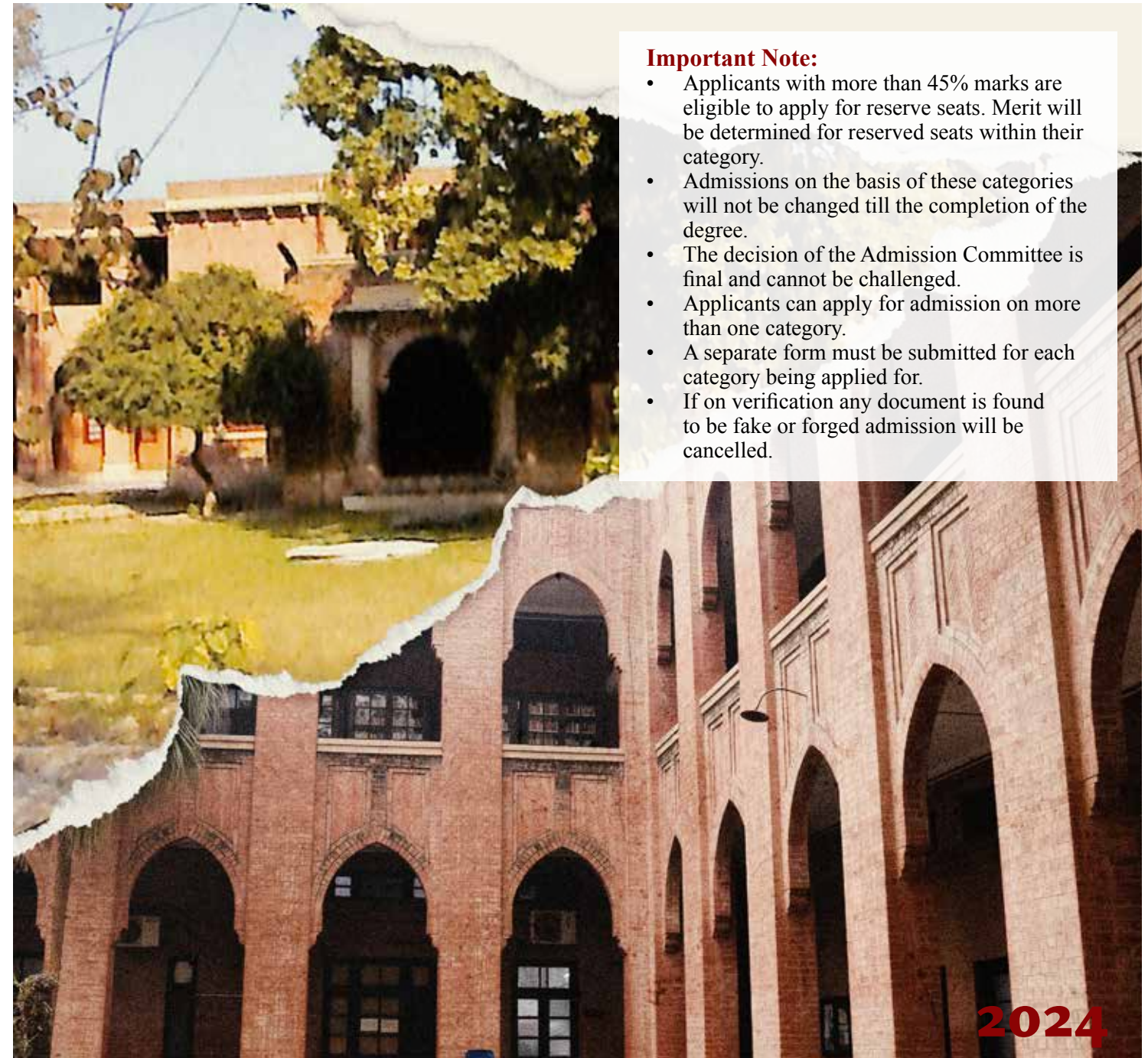
05

### Sports

Applicants applying for admission on sports seats must attach their certificates of participation and awards won at intercollegiate, district, provincial and national sports events. Students will also be required to demonstrate on the field.

### Important Note:

- Applicants with more than 45% marks are eligible to apply for reserve seats. Merit will be determined for reserved seats within their category.
- Admissions on the basis of these categories will not be changed till the completion of the degree.
- The decision of the Admission Committee is final and cannot be challenged.
- Applicants can apply for admission on more than one category.
- A separate form must be submitted for each category being applied for.
- If on verification any document is found to be fake or forged admission will be cancelled.



2024



## Degree Requirements for 4-years program

To receive a BS / BCS / BBA / B.Ed. degree, a student must complete a minimum of 125 credit hours and maximum of 144 credit hours with a minimum CGPA of 2.50

Students are required to fulfill the following course requirements during the 8 semesters:

Courses	Credit Hours
General Education	
Arts & Humanities	3
Natural Sciences	3
Social Sciences	3
Functional English	3
Expository Writing	3
Quantitative Reasoning	6
Islamic Studies / Christian Ethics	2
Ideology & Constitution of Pakistan	2
Application of Information & Communication (ICT)	3
Entrepreneurship	2
Civics & Community Engagement	2
Total (General Education)	32
Interdisciplinary / Allied Courses	12
Major Courses	72-91
Minor (Optional)	12
Field Experience / Internship	3
Capstone Project / Research Report*	6
<b>Total</b>	<b>125-144</b>

The course requirements for a BFA / BD degree may vary.

\*NO STUDENT will be allowed to commence her capstone project / research work without

completing at least 85 credit hours of course work with a minimum CGPA of 2.50.

### Active Citizenship Program

Active Citizenship program offered by Kinnaird College in collaboration with British Council and HEC is a social leadership training program that promotes intercultural dialogue and community-led social development. It is a mandatory requirement for the completion of undergraduate degree and based on two semesters. All students will study the theoretical portion through different activities starting in their 3rd semester. They will plan their social action projects in 4th semester and implement it in the field.

### Academic Awards

Kinnaird College for Women awards degree with Honors to a few students in each graduating class. The criteria for graduation with Honors are as follows:

### Gold Medals

Students with the highest CGPA in their faculty are awarded gold medals provided they complete their Bachelors degree without any break from the time of their registration in the first semester and do not improve or repeat any course.

### Principal's Honor List

Students with CGPA of 3.90 or above are placed on the Principal's Honor List.

### Merit List

Students with CGPA of 3.80 or above are placed on the Merit List.





## Fee Structure for Undergraduate Programs

**DUES FOR YEAR 2024-25** (Pak Rupees) Fall and Spring Semester Only

	BS/B.Ed. Without Practical	BS/BFA/BD With Practical	BBA / Acct. & Finance / LLB	BSCS
Tuition Fee (Rs.)	128,100	140,100	156,000	156,000
Funds (Rs.)	44,900	44,900	44,900	44,900
Practical Subject Fee (Rs.)	-	2,000	-	10,000
<b>Total</b>	<b>173,000</b>	<b>187,000</b>	<b>200,900</b>	<b>210,900</b>

Funds at the Time of Admission	
Admission Fee	12,000
Registration Fee	2,000
Library Security (Refundable)	15,000
Endowment Fund	7,800
<b>Total</b>	<b>36,800</b>

Annual Funds	
Examination Fee	2,000
General Funds	1,840
Building Funds	2,700
Academic Development Fund	1,500
Red Crescent Fund	60
<b>Total</b>	<b>8100</b>
<b>Total Funds</b>	<b>44,900</b>

### Fee for Foreign Students

The Tuition Fee for foreign students is \$2000 or equivalent to Pak rupees on the date of payment plus college funds. Fee is not subject to installments. Foreign Students admitted to the BBA, Accounting & Finance, LLB and BCS program will pay an additional \$300 towards tuition fee.

### Important Notes

- Fee once paid is refunded only as per below mentioned HEC policy for all students including those who are admitted on result awaiting basis:
  1. Full (100%) fee refund up to 7th day after commencement of classes as
  2. Half (50%) fee refund from 8th to 15th day after commencement of classes as
  3. No Fee refund thereafter except refundable security
- A fine of Rs. 25 per day will be charged if fee is not deposited within the scheduled dates. No fine waivers are available in any case.
- In addition to fee, students will pay research project fee in the 3rd & 4th year as detail below:
 

Major without practical	Rs. 2000
Major with practical	Rs. 5000
- Students opting to take Summer Courses will have to pay the course fee of Rs. 4,000 for each course of BS/BFA/BD/B.Ed. For BBA, Accounting & Finance, LLB and BCS courses the fee will be Rs. 6000/-
- Fee for repeat of a course is Rs. 4000/- for BS/BFA/BD/B.Ed. programs and Rs. 6000/- for BBA, Accounting & Finance, LLB and BCS program.

### Student Financial Aid and Scholarships

There is a list of scholarships on need and merit basis available for students to cater their educational expenses. In addition to the above, a Financial Aid Committee is also established by the College for the evaluation and approval of the applications submitted by the students for financial aid.

You can visit <https://www.kinnaird.edu.pk/scholarships-3/> for further details.





## Graduate Programs

M.Phil Accounting & Finance

M.Phil Applied Linguistics

M.Phil Biochemistry

M.Phil Biotechnology

M.Phil Business Administration

MS Clinical Psychology

MS Computer Science

M.Phil Education

M.Phil English Literature

M.Phil Environmental Sciences

M.Phil Food Science & Human Nutrition

M.Phil International Relations

M.Phil Media Studies

M.Phil Political Science

M.Phil Statistics



### **M.Phil in Accounting & Finance**

The M.Phil in Accounting & Finance offers an intensive blend of advanced study and research for students aiming to deepen their expertise in Finance, Accounting, Commerce, and Banking, making it ideal for Ph.D. candidates. It provides a robust academic foundation vital for careers in accounting and finance while acknowledging the importance of the corporate sector. Through collaborative workshops, seminars, and research symposiums with industry leaders, students gain invaluable insights into evolving financial market needs. Engaging with industry partners fosters a comprehensive understanding of corporate finance dynamics, enriching both academic and professional readiness. Whether pursuing further academic pursuits or entering the financial sector, this program ensures students are well-equipped for success.

#### **Admission Requirement**

- 04 years BA/B.Sc. (Hons) with a minimum CGPA of 2.50 OR 60% marks in Masters. The applicants must have done their Graduation / Masters in Accounting & Finance, B.Com, BBA or Banking and Finance.
- All candidates must appear for KC Graduate Assessment Test.
- Only short listed candidates will be called for the Interview.

### **M.Phil in Applied Linguistics**

MPhil Applied Linguistics at Kinnaird College for Women comprises eight major courses, each worth 3 credit hours. The diverse field of subjects includes major courses such as Emerging Trends in Applied Linguistics, Phonetics & Phonology, Forensic Linguistics, Semantic & Pragmatics, Advanced Research Methods & Academic Writing, Educational Leadership & Management, Curriculum Design & ESP, and

Computer Assisted Discourse Studies. These courses are based on qualitative and quantitative research methods, which help them get prepared for research and thesis writing. With an MPhil in Applied Linguistics at Kinnaird, students can pursue a wide range of employment opportunities and become competent leaders through a variety of learning experiences.

#### **Admission Requirement**

- 04 years BA/B.Sc. (Hons) with a minimum CGPA of 2.50 OR 60% marks in Masters. The applicants must have done their BS in Applied Linguistics/English Language and Literature Masters in Applied Linguistics, English Literature and ELT.
- All candidates must appear for KC Graduate Assessment Test.
- Only short listed candidates will be called for the Interview.

### **M.Phil in Biochemistry**

Biochemistry is the field of science which has revolutionized the field of life sciences and medicine. Biochemistry has great importance in present time as it deals with the study of biochemical processes taking place in living organisms, structure of cellular components and their biomedical importance, enzymes, hormones, diseases and drugs.

The program develops in depth theoretical and practical knowledge of advance topics of Biochemistry and its allied areas. The students will be able to critically analyze the case studies / scenarios and apply the biochemistry knowledge in solving problems.

#### **Admission Requirement**

- 04 years B.Sc. (Hons) with a minimum CGPA of 2.50 in degree OR 60% marks in Masters. The applicants must have done their Graduation

- / Masters in Biochemistry, Biotechnology, Molecular Biology, Microbiology, and Chemistry with specialization in Biochemistry.
- All candidates must appear for the KC Graduate Assessment Test.
- Only short listed candidates will called for the Interview.

### **M.Phil in Biotechnology**

Biotechnology is a futuristic and highly interdisciplinary field that combines Biological Sciences with engineering technologies to produce products that advances healthcare, medicine, agriculture, food pharmaceuticals and environment control. The scope of Biotechnology is increasing with more and more basic and applied research endeavors in major areas such as health and medicine, agriculture, industry and environment. The union of biotechnology with recombinant DNA technology (genetic engineering) has developed a new field called Molecular Biotechnology. This new science focuses on development of modified or new products, ultimately, leading to commercialization of these products, which can be used for human welfare. Many plant and animal products, which were not affordable to common people few years ago, are now available in some parts of the world due to decrease in prices and acceleration of their production. The M.Phil program in Biotechnology will empower women to become high quality scholars and professionals who would serve effectively and efficiently in academia and other relevant organizations / companies through equipping its graduates with quality education alongside necessary analytical and research skills in the selective specialized areas of Biotechnology.

#### **Admission Requirement**

- 04 years B.Sc. (Hons) majoring in Biotechnology or any other related discipline

of Biological Sciences with a minimum CGPA of 2.50 OR 60% in Masters.

- All candidates must appear for the KC Graduate Assessment Test.
- Only short listed candidates will be called for the Interview.

### **M.Phil Business Administration**

The M.Phil degree in Business Administration is geared towards those students and professionals whose goal is to enhance their knowledge and skill-set in response to the needs of the changing business environment. It offers specializations in Human Resource Management, Marketing & Brand Management and Finance & Banking.

The global corporate world has seen many Kinnaird business graduates occupying top slots in the corporate ladder. Our M.Phil program opens multiple opportunities in the corporate sector as well as the academia. Business graduates can opt to work in multinational corporations, banks, service sector, co-operatives and NGOs etc. or decide to setup their own business. The opportunities available are unlimited. Research is the cornerstone of the program that helps create the link between academia and industry.

#### **Admission Requirement**

- 4 years BBA/B.COM (Hons) with minimum CGPA of 2.50.
- All candidates must appear for the KC Graduate Assessment Test. The KC Graduate Assessment tests the applicants' basic concepts about business, research orientation, general knowledge, critical thinking and writing skills.
- Only those applicants who qualify the KC General Assessment Test will be short listed and called for the interview.



### **MS in Clinical Psychology**

The MS in Clinical Psychology aims to prepare clinical psychologist to work in the area of mental health in clinical settings. The goal of the program is to train skilled and effective clinical psychologist who are well versed in the ethics of the profession. The program offers courses to enhance the knowledge and understanding of psychopathology, diagnosis and therapeutics interventions for both children and adults. Furthermore, students will develop understanding the impact of the cultural, social and environmental factors that affect the mental health wellbeing. In addition to the course work students are required to attend seminars, workshops, lectures and discussion forums arrange by the department. Students are required to do their internship in clinical settings for both adults and child psychology and complete research project in the domain of clinical psychology.

#### **Admission Requirement**

- 04 years BA/B.Sc. (Hons) with a minimum CGPA of 2.50 OR 60% marks in Masters. The applicants should have done their Graduation/ Masters in Psychology.
- All candidates must appear for the KC Graduate Assessment Test.
- Only short listed candidates will be called for the Interview.

### **MS in Computer Science**

In the last three decades, computers have entered all spheres of our lives from business applications, office automation, science and engineering, expert systems, information and data processing, to shopping in grocery stores. Given the unprecedented pace at which developments are taking place there is a demand today for advanced training and education in Computer Science. The two-year MS Computer Science program prepares students to understand the diverse and ever-evolving field of Computer Science. It enables students to conduct

research, to develop their capacity for inquiry, abstract and logical thinking, and critical analysis. Students are exposed to quality work being done in areas including Machine Learning, Networks Information Security, Software Engineering, Natural Language Processing, Data Mining, Human Computer Interaction, and Artificial Intelligence

#### **Admission Requirement**

- 04 years BA/B.Sc. (Hons) with a minimum CGPA of 2.50 OR 60% marks in Masters after 02 years BA/ B.Sc. The applicants should have done their Graduation/Masters in Computer Science, Software Engineering, Information Technology or any Engineering discipline.
- All candidates must appear for the KC Graduate Assessment test.
- Only shortlisted candidates are called for an interview.

### **M.Phil in Education**

The aim of the curriculum is to enhance a deeper understanding in the field of Education as well as development of skills and capabilities required to succeed in the field. The program will also focus on research that will contribute to the discipline and further add to the existing body of knowledge. This program is designed for individuals who plan to enter the field of education and as well as for those individuals who are already working in the field and have a desire to enhance their knowledge and strengthen their research skills. The program invites learners who are excited about challenges to further develop their critical thinking, excel in their own learning as well as contribute to the field through the development of new body of knowledge through research.

#### **Admission Requirement**

- 04 years B.Ed. (Hons) with a minimum CGPA of 2.50 OR 60% marks in Masters. The

applicants should have done their Graduation/ Masters in Education /TESOL/ ELT.

- All candidates must appear for the KC Graduate Assessment Test.
- Only short listed candidates will be called for the Interview.

### **M.Phil in English Literature**

The M.Phil in English Literature at Kinnaird is a 2 year course designed particularly for students wishing to take up literature as a research oriented discipline with an intensive focus on literary texts in their historical and intellectual contexts, as seen in both generic and chronological perspectives. The course is cumulative and self-contained, and involves rigorous research work leading to a dissertation on a topic that interests the student.

#### **Admission Requirement**

- 04 years BA/B.Sc. (Hons) with a minimum CGPA of 2.50 OR 60% marks in Masters. The applicants should have done their Graduation/ Masters in English Literature.
- All candidates must appear for the KC Graduate Assessment Test.
- Only short listed candidates will be called for the Interview.

### **M.Phil in Environmental Sciences**

The MPhil in Environmental Sciences is a dynamic program which focuses on current issues of environment and their solutions. The program aims to train and produce graduates who will have broad appreciation of all aspects of environment and are equipped to analyze and address the increasing environmental and developmental challenges. The program is designed to provide graduates with an advance level of understanding of environment and environmental related issues. It is strongly aligned with several Sustainable Development Goals and facilitates students to develop knowledge and skills to formulate and

implement solutions to problems of sustainable development. The program will enable the students to apply theoretical understanding, professional judgment and practical skills in their professional practice in environmental field. The department offers research in various fields for which well established and well equipped research facilities are available.

There are numerous career opportunities for graduating students, both in public and private sector. Students who successfully complete the program can pursue their careers in academia, international organizations, industries, environmental consultancies and NGOs, research organizations and government entities such as Environment Protection Department, Urban unit, Solid waste management department and Ministry of climate change etc.

#### **Admission Requirement**

- 04 years BS with a minimum CGPA of 2.50 OR 60% marks in Masters after 02 years BSc. The applicants should have done their Graduation/ Masters in Environmental Sciences, Environmental Engineering, Pure Sciences, Geography and any other relevant field.
- Applicants must have done Intermediate with Science.
- All candidates must appear for the KC Graduate Assessment Test.
- Only short listed candidates will be called for the Interview.

### **M.Phil in Food Science & Human Nutrition**

This research base program focuses on various aspects of food science as related to human nutrition. This program aims at integrating knowledge from the natural, social and behavioral sciences as it applies to food and nutrition. This platform is an opportunity for individuals already working in various food and nutrition fields to enhance their



nutritional knowledge and practically apply it to their field of specialization.

This dynamic program helps students apply their knowledge of Food Science in the development of innovative food products and also emphasizes on the application of food and diet in prevention and treatment of disease both at an individual and community level. Thus, the unique combination of Medical Nutrition Therapy and innovative functional and health foods enables the students to work in various fields ranging from research in the food science laboratory to performing their duties in the medical and ICU wards of the hospitals or working as a nutritionist in the community for improving the health of the most vulnerable sector of the population.

#### **Admission Requirement**

- 04 years B.Sc. (Hons) with a minimum CGPA of 2.50 OR 60% marks in Masters. The applicants should have done their Graduation in Food Science & Human Nutrition, Home Economics (Food & Nutrition).
- All candidates must appear for KC Graduate Assessment Test.
- Only short listed candidates will be called for the Interview.

#### **M.Phil in International Relations**

The M.Phil in International Relations is a research oriented program which is designed to meet the needs of all those who wish to enhance their understanding of the subject. The program recognizes the changing nature of the contemporary political, economic and socio-cultural environment and seeks to lay an interdisciplinary basis for understanding these changes. International Relations is a growing and ever-evolving field and highly skilled professionals are in high demand. M.Phil International Relations program can help equip students with the skills to work on a global scale.

#### **Admission Requirement**

- 04 years BA/B.Sc. (Hons) with a minimum CGPA of 2.50 in degree OR 60% marks in Masters.
- All candidates must appear for the KC Graduate Assessment Test.
- Only short listed candidates will be called for the Interview.

#### **M.Phil in Media Studies**

This degree course is a highly rigorous and wide-ranging program for those students who are confident of their ability to become a successful part of the media industry. The program is highly practice-oriented and provides hands-on training to students in areas of their interest. It offers a solid foundation in all aspects of the media business, with research work and special projects; all with the aim to put our students at the top of the media scene once they step out in the real world.

We offer two specializations in our M.Phil program i.e. Professional Track and Research Track.

#### **Admission Requirement**

- 04 years BA/B.Sc. (Hons) with a minimum CGPA of 2.50 OR 60% marks in Masters. The applicants should have done their Graduation/ Masters in Media Studies.
- All candidates must appear for the KC Graduate Assessment Test.
- Only short listed candidates will be called for the Interview.

#### **M.Phil in Political Science**

The aim of the M.Phil Political Science program is to prepare students for roles in sectors of academia, research, legislation, mass-media, non-governmental agencies and public policy by inculcating knowledge of political processes and skills. The degree emphasizes the research-led study of government and political institutions from area-specific and comparative perspectives,

and provides a range of educational experiences in a variety of learning environments to develop written and oral communication skills as well as other technical skills. It provides solid foundation for a wide range of careers including academia, media, civil society, diplomatic and governmental positions.

#### **Admission Requirement**

- 04 years BA/B.Sc. (Hons) with a minimum CGPA of 2.50 in degree OR 60% marks in Masters.
- All candidates must appear for the KC Graduate Assessment Test.
- Only short listed candidates will be called for the Interview.

#### **M.Phil in Statistics**

The two-year M.Phil Statistics program at Kinnaird College will provide the students a sound understanding in the theory and applications of statistics. The M.Phil involves a combination of course work and research training and is designed to extend the competence of candidates. The program offers a range of courses and will provide the quantitative skills and expertise required to carry out various types of statistical analyses. Students acquire the skills necessary to undertake applied and/or theoretical projects and the ability to communicate the results of their work to wider audiences. The mainstream statistical theory will be supplemented by studies in specialized areas such as Quality Control and Reliability Theory. Students may choose to specialize in any of a number of areas including Quality Control, Mathematical Statistics, Advanced Sampling Techniques and Reliability Theory. The structure and content of the courses within the program focus on the skills and techniques that are relevant and applicable.

#### **Admission Requirement**

- 04 years BA/B.Sc. (Hons) with a minimum CGPA of 2.50 OR 60% marks in Masters. The applicants should have done their Graduation/ Masters in Statistics, Mathematics.
- All candidates must appear for the KC Graduate Assessment Test.
- Only short listed candidates will be called for the Interview.



## Degree Requirements for MS/M.Phil program

The 02 years MS/M.Phil degree program divided into four semesters: Fall & Spring every year. The duration of each semester is 16 – 18 weeks.

### Course Work

Most courses are 3 credit hours. Each 3 credit hour course involves 48 contact hours with the teacher in the classroom, plus 144 hours of self-study which includes reading book chapters or journal articles, doing assignments or projects and preparation for tests and examinations.

### Research Thesis

An M.Phil candidate who has completed her course work with a minimum CGPA of 3.00 must present and pass the oral proposal defense examination before she is allowed to carry out her Masters research. On passing the thesis proposal defense the student must carry out a research study which is described in a thesis. She must successfully defend the completed work in an oral examination involving a presentation and question answer session in the presence of an external examiner

### Degree Requirements

To receive MS/M.Phil degree (except MS Computer Sciences) students must complete 24 credit hours of course work with a minimum CGPA of 3.0 and successfully defend a research thesis equivalent to 6 credit hours.

The MS Computer Science degree requires students to complete a minimum of 30 credit hours in two years. A student has the option to pursue MS by undertaking either a 6 credit hour thesis or a three credit hour taught course and a three credit hours project.

### Time Limit for degree completion

02 years MS/M.Phil degree must be completed within 3-years from the commencement of the

program. If degree requirements are not completed within this time, the student will not be awarded a degree.

### Important Note

If a student does not complete requirements for her degree in two years then she would be charged Rs. 10000/- per semester till she completes her degree (no longer than 3 years from the date of starting of program).



## Fee Structure for MS/M.Phil Programs

### For Applied Linguistics, Education, English Literature, Environmental Sciences, International Relations, Media Studies, Political Science and Statistics

Registration Fee	Rs. 10,000
Research Fund	Rs. 5,000
Per Course Fee	Rs. 21,000
Research Thesis	Rs. 30,000

### For Accounting & Finance, Biochemistry, Biotechnology, Business Administration, Clinical Psychology, Computer Science and Food Science & Human Nutrition

Registration Fee	Rs. 10,000
Research Fund	Rs. 5,000
Per Course Fee	Rs. 25,000
Research Thesis	Rs. 30,000

### Please Note:

- Fee once paid is refunded only as per HEC refund policy for all students including those who are admitted on result awaiting basis.
- A fine of Rs. 25 per day will be charged if fee is not deposited within the scheduled dates. No fine waivers are available in any case.
- For MS Clinical Psychology and M.Phil Food Sciences & Human Nutrition, students are required to pay the internship/placement fee directly to the organization assigned by the respective department, in addition to the program fee.

### Student Financial Aid and Scholarships

There is a list of scholarships on need and merit basis available for students to cater their educational expenses. In addition to the above, a Financial Aid Committee is also established by the College for the evaluation and approval of the applications submitted by the students for financial aid. You can visit <https://www.kinnaird.edu.pk/scholarships-3/> for further details.



## Academic Rules & Regulations

### How a Semester system works

A Semester system divides the academic year into two 16-18 weeks duration. The academic year starts with the Fall semester in August and ends with the Spring semester in May. A four year Program thus has eight semesters.

### Credit Hour

A student gains one credit hour by attending 16 hours of classes. Most courses are of 3 credit hours, which mean a student is required to attend 48 hours of class teaching to complete a course. The courses in science subjects are of 4 credit hours that include 48 contact hours of class teaching and 32 contact hours of lab work.

For a BFA, a student is required to attend 96 hours of studio classes for a 3 credit hour course.

### Course Registration

All students, after consulting their Head of departments may register themselves in courses they decide to take in each semester. Registration dates are announced well before time and students are required to register themselves online during those dates. New students can get their online login password from their respective departments / Admission Office.

### Add/Drop a Course

Students are allowed to drop a course within two weeks of the commencement of the semester from their online student information system account.

### Withdrawal of a Course

A written request for withdrawal from any course must be approved by the head of the department and submitted to exam cell within one week after

the midterm exams. However, a 'W' will appear on the transcript and fees paid for such courses will neither be refunded nor carried over to the next semester. Student will have to pay the course repeating fee whenever she registers for the course again.

### Class Attendance

Students are expected to attend every class for each course in which they are enrolled. Absences of more than six lecture hours in 3 credit hours course and 4 lecture-hours in 2 credit hours course will lead to denial of pursuing the course, an 'W' on the transcript and the student will have to repeat the course whenever offered again.

### Course Load in a Semester

Students can register for a maximum of 18 credit hours in a regular semester including repeating courses and a maximum of 6 credit hours in the summer semester for an undergraduate program. M.Phil students can take up to a total of 12 credit hours per semester in the regular semester.

### Academic Grading Policy

The performance of students is assessed during the course through a variety of assessment procedures such as written assignments, quizzes, projects, case studies, oral presentations, tests and examinations or any other method considered appropriate by the course teachers and the College. Mid-term and Final examinations contribute 60% and other assessment tasks contribute 40% to the final grade. It is at the discretion of the course teacher to decide on the weightage of all assessment tasks. Kinnaird strictly follows a 4-point grading system similar to the one prevalent in most accredited

institutions around the globe. All grades assigned by the Course Instructor are based on either the Absolute Marking System or the Relative Marking System.

### Absolute Marking System

In this system the student grade is given on the basis of the marks obtained by student on an assessment item. For example, if her marks are between 85 - 89 she will get an 'A' grade and if her marks are between 73 -75 she will get a B grade.

### Grading Criteria

Marks	Grade	Grade Point
90 - 100	A+	4.00
85 - 89	A	3.89
80 - 84	A-	3.67
76 - 79	B+	3.33
73 - 75	B	3.00
70 - 72	B-	2.67
66 - 69	C+	2.33
63 - 65	C	2.00
60 - 62	C-	1.67
56 - 59	D+	1.33
53 - 55	D	1.00
50 - 52	D-	0.67
00 - 49	F	0.00
Withdraw	W	0.00

### Relative Marking System

In this system the overall grading in the class is done so that students can be compared with each other. The top students will be assigned "A" grade while the students who get the lowest marks will be given "D" or "F".

### CGPA

Semester Grade Point Average (GPA) and Cumulative Grade Point Averages (CGPA) will be calculated using the following relationship:

$$\text{GPA} = \frac{(\text{Credit Hours in semester} * \text{Grade Point Earned})}{\text{Total Semester Credit Hours}}$$

$$\text{CGPA} = \frac{(\text{Credit Hours taken in all semesters} * \text{Grade Point Earned})}{\text{Total Credit Hours Taken in all Semesters}}$$

### Grade F

Grade F will be awarded to students in the following cases:

1. Failure to attain at least 50% marks in a course
2. Failure to appear in the final examinations

### Course Repeat

Grades earned in each semester will appear on the student's transcript. Students receiving an "F" grade must repeat the course by re-taking the entire course including attending all classes and redoing all course work (tests, quizzes, assignments etc.) whenever the course is offered again after payment of the fee. Students receiving a grade "C+" or below for undergraduate program must repeat the course if they fail to maintain a minimum CGPA of 2.50. Graduate students receiving grade "B-" or below must repeat the course if they fail to maintain a minimum CGPA of 3.0.



The old grade will remain in the transcript but it will not be included in CGPA calculation and new grade received will be indicated by an asterisk (\*\*) on the transcript indicating the grade was received in a course retake.

### Rechecking of Paper:

A student can apply for rechecking of Final Exams within 15 days after the declaration of result. During re-checking, the Re-checking Committee shall check:

- i. Total marks awarded in the answer sheet.
- ii. The posting of marks from inside to the front page of answer sheet.
- iii. Any question left unmarked.

The Answer sheet once marked shall not be re-evaluated.

### Academic Probation and Dismissal

Students who fail to maintain a minimum CGPA of 2.5 for undergraduate program and CGPA of 3.0 for graduate program will be put on probation for the next semester. If at the end of that semester they fail to attain the required CGPA, they will be dropped from the program altogether.

### Transcript Policies

Official transcripts, bearing the official embossed seal of the College, are issued to all students on completion of all degree requirements only on written request from students. Transcripts or other evidence of attendance will not be issued if dues to the College are not cleared. Each student must obtain a clearance from the Finance Office, showing evidence that all dues have been paid in full, and outstanding balances have been cleared, before a transcript of her record is issued. A minimum of 01 week is required to print an official transcript after the formal request is made.

### Time Limit for Program Completion

Undergraduate students can complete their degree program in a minimum of 4 years and a maximum of 6 years from the date of the first registration. The M.Phil degree must be completed in a minimum of 2 years and a maximum of 3 years from the commencement of the program. If degree requirements are not completed within this time, the student will not be awarded a degree.

### Semester Off / Semester Freeze

Student may take any regular semester(s) off by submitting an application to the Head of Department before the start of the new semester. On approval the application must be forwarded to the Deputy Registrar. A maximum of two consecutive semesters can be taken off but the maximum duration of the degree program shall remain the same. Students are required to pay a fee of Rs. 6000/- for Undergraduate and Rs. 10,000/- for Graduate programs for each semester taken off to retain her registration with the college.



## Student Code of Conduct

Kinnaird expects that the behavior of its students within and outside the college will be in conformity with standards of morality and discipline. Students will respect the rights and privileges of the members of the Kinnaird community at all times and will conduct themselves in ways that uphold the reputation of the college. Kinnaird encourages and protects a free exchange of ideas for teaching and research purposes within the boundaries of orderliness and civil conduct as stated in this policy.

### 1. General Conduct

All students will present themselves with dignity as mature, law abiding and responsible persons.

- Students are expected to dress in a simple, decent and appropriate manner.
- Students individually, or as a group, will refrain from engaging in any activity which hinders or prevents the participation of another person or group of persons in any of the activities of the college.
- Students will refrain from possession, use, distribution, and sale of illegal drugs, tobacco, and alcohol. The college will take disciplinary actions against any student involved in drug-related activities as per the HEC's policy on drug and tobacco abuse in higher education institutions aiming for drug-free and smoke-free campuses.
- Students shall not engage in, assist, associate with or promote any kind of activity of a disruptive nature which would affect the reputation of the college.
- Students shall not conduct or participate in any political activity on campus and shall not organize or participate in demonstration, rallies or picketing on campus.
- Students availing the college hostel facilities shall comply with all the hostel rules and will conduct themselves in a manner that respects the rights of other resident students, faculty and

staff of the College. The hostel rules are to be read in conjunction with the Students Code of Conduct.

### 2. Academic Conduct

All students will diligently apply themselves to their registered courses of study. They will refrain from any conduct that may lead to the disruption of an academic program of the College.

- Students shall attend all academic activities such as field visits, seminars, workshop, internships etc., in accordance with the attendance requirements of the college with regard to each program except for reasons acceptable to the college.
- The submission of items for assessment is an essential part of the learning process and a vital means of assessing students' understanding of a course. The submitted work therefore must be the student's own work. This does not mean that students may not make use of the work of others. While quoting or paraphrasing material from other sources, they must acknowledge the source.
- Each student shall be solely responsible for completing her scheduled assignments and taking her examinations as per course requirements.
- Students shall obtain prior authorization from the relevant authority of the college before procuring, possessing, distributing or receiving any confidential material pertaining to research. Students will respect the confidentiality of the information and will use it in no other circumstances than for authorized academic and professional purposes.
- Students will be required to obtain prior approval in writing from the principal or her designated nominee for the following:
- Organizing any religious or social activities at the campus not already scheduled in the academic calendar.



- Making public statements, communication, or correspondence with the press or other media for mass communication on behalf of Kinnaird or commenting on the internal affairs of the College.
- Inviting Government and/or foreign dignitaries, ministers, representatives of foreign governments/agencies or other public personalities in their official capacity on campus.

### 3. Disciplinary Offences

Without prejudice to the generality of the provisions of the Code of Conduct, the following conduct by students will constitute a disciplinary offence;

- Repeated failure to attend scheduled instruction, practical work, examination, or other field based assignments and / or coercing other students to act likewise.
- Assault, molestation or harassment of students, staff, faculty, or other clients, within or outside the College through conventional and electronic means.
- Any form of unauthorized picketing, rallies, demonstrations or organized obstructions of any College function in any manner whatsoever.
- Any attempt to disrupt academic programs of the College or its operations.
- Malicious acts, theft, or attempted theft, willful damage or misuse of College property or property that belongs to other people in the college.
- Smoking in the College.
- Use of mobile phones in academic block (class rooms and corridors).
- Unauthorized housing of persons in the hostel or other buildings on the College campus.
- Cheating collusion, plagiarism and/or use of unfair means in various assignments, examinations, dissertation / thesis or any other academic work.
- Procurement, possession, use, sale, and display of any weapon including firearms, banned

drugs, alcohol or other contraband items on the college campus and at college events.

- An Act of violence causing injury or damage to any person or property in the College.
- Raising funds, accepting donations or engaging in similar activities for and on behalf of the College without a prior written approval of the Principal or her nominee.
- Any form or use of intimidation, insult, abusive language, unruly behavior, disrespectful attitude with students, faculty, staff or clients within or outside the College.
- Providing wrong information, giving false and / or fabricated evidence, deliberately concealing material facts or information in any proceedings and inquiries carried out on any forum by the College.
- Committing or involvement in any act of deceit, fraud, forgery with the College, students, staff, and faculty.
- Any act in violation, contravention or disregard to this Code of Conduct.

All students will strictly uphold and adhere to the Code of Conduct outlined in Clauses 1 to 3 above. In cases where there are grounds to suspect a breach of the Code of Conduct, disciplinary action may be initiated for such behavior committed either within or outside the College.

- In case of a disciplinary offence, the college will impose any one or more of the disciplinary actions given below, depending on the severity of the offence.
- Counseling of the student.
- Probation for a specified period of time with mandatory counseling.
- A letter of warning or reprimand to the student.
- Suspension from the College for a specified period.
- Expulsion from the College and / or expulsion from the hostel if so required.
- other penalty which the relevant authority / body of the College may deem fit to impose.





## Teaching Faculty

### ACCOUNTING & FINANCE

#### Ms. Syeda Fizza Abbas

Assistant Professor  
MPhil Commerce (University of Central Punjab, Lahore)  
MSc. Banking and Finance (Government College University, Lahore)  
MSc. Economics (Government College University, Lahore)

#### Dr. Atia Alam

Associate Professor  
PhD Management Sciences (COMSATS Institute of Information Technology, Lahore)  
MSc. Management Sciences (COMSATS Institute of Information Technology, Lahore)

#### Dr. Farah Amir

Assistant Professor  
PhD Commerce (University of Central Punjab, Lahore)  
MPhil Commerce (University of Central Punjab, Lahore)

#### Ms. Naila Sadiq

Lecturer  
MS Finance (University of Central Punjab, Lahore)  
BS Management (University of Punjab, Lahore)

### APPLIED LINGUISTICS

#### Dr. Badriah Khaleel

Assistant Professor  
PhD English (Imperial College of Business Studies, Lahore)  
MPhil Applied Linguistics (Kinnaird College for Women, Lahore)

#### Dr. Farah Kashif

Associate Professor  
PhD English (Linguistics) (Bahauddin Zakariya University, Multan)  
MA English (Bahauddin Zakariya University, Multan)

#### Dr. Asma Aftab

Assistant Professor  
PhD Applied English Linguistics (University of Birmingham, UK)  
MA English Language Teaching (Kinnaird College for Women, Lahore)  
MA English (University of the Punjab, Lahore)

#### Ms. Sabeen Khurram Qureshi

Lecturer  
MPhil English Language Teaching (Kinnaird College for Women, Lahore)  
MA Applied Linguistics (Kinnaird College for Women, Lahore)

#### Ms. Amna Shahid

Lecturer  
MPhil Applied Linguistics (Kinnaird College for Women, Lahore)  
MPhil English Language Teaching (Kinnaird College for Women, Lahore)

#### Ms. Farwa Qazalbash

Lecturer  
MPhil English (Linguistics) (Riphah International University, Lahore)  
MA English Language Teaching & Linguistics (University of the Punjab, Lahore)

#### Ms. Fariah Farooq Khan

Lecturer  
MPhil Applied Linguistics (Kinnaird College for Women, Lahore)  
MA Applied Linguistics (Kinnaird College for Women, Lahore)

### ARABIC

#### Ms. Narmeen Faryal

Assistant Professor  
MPhil Arabic (Minhaj University, Lahore)  
MA Arabic (University of the Punjab, Lahore)

### BIOCHEMISTRY

#### Dr. Hooria Younas

Associate Professor  
PhD Biological Sciences (University of the Punjab, Lahore)  
MSc. Biochemistry (University of the Punjab, Lahore)

#### Dr. Raazia Tasadduq

Assistant Professor  
PhD Biological Sciences (University of the Punjab, Lahore)  
BSc. Hons. Microbiology & Molecular Genetics (University of the Punjab, Lahore)

#### Dr. Amna Younus

Assistant Professor  
PhD Chemistry (Lahore College for Women University, Lahore)  
MS Biochemistry (University of the Punjab, Lahore)

#### Dr. Ruqyya Khalid

Assistant Professor  
PhD Biological Sciences (University of the Punjab, Lahore)  
MPhil leading to PhD (University of the Punjab, Lahore)

#### Ms. Sammar Aaroon

Lecturer  
MPhil Molecular Biology (University of the Punjab, Lahore)  
BS Hons. Biochemistry (Kinnaird College for Women, Lahore)

### BIOTECHNOLOGY / GENETICS

#### Prof. Dr. Iram Anjum

Professor/Academic Dean of Applied and Pure Sciences  
PhD Biotechnology (Quaid-i-Azam University, Islamabad)  
MSc. Zoology (Bahauddin Zakariya University, Multan)

#### Prof. Dr. Shahnaz Choudhry

Professor/Director ORIC  
PhD Molecular Biology (University of the Punjab, Lahore)  
MSc. Zoology (University of the Punjab, Lahore)

#### Dr. Humera Kausar

Associate Professor  
PhD Molecular Biology (University of the Punjab, Lahore)  
MSc. Microbiology (University of Karachi, Karachi)

#### Dr. Tanveer Majeed

Assistant Professor  
PhD Biotechnology (Pakistan Institute of Engineering and Applied Sciences, Islamabad)  
MPhil Biotechnology (Pakistan Institute of Engineering and Applied Sciences, Islamabad)

#### Dr. Sumaira Anjum

Assistant Professor  
PhD Biotechnology (Quaid-i-Azam University, Islamabad)  
MPhil Biochemistry Molecular Biology (Quaid-i-Azam University, Islamabad)

#### Dr. Shumaila Zulfiqar

Assistant Professor  
PhD Biotechnology (Pakistan Institute of Engineering and Applied Sciences)  
MS Biotechnology (Government College University, Faisalabad)

#### Ms. Roeha Akhtar

Lecturer  
MPhil Biotechnology (Kinnaird College for Women, Lahore)  
BSc (Hons) Biotechnology (Kinnaird College for Women, Lahore)

### BOTANY

#### Ms. Shahnaila Bukhari

Assistant Professor  
MPhil Botany (University of Agriculture, Faisalabad)  
MSc. Botany (The Islamia University of Bahawalpur, Bahawalpur)

#### Dr. Samina Hassan

Associate Professor  
PhD. Molecular Biology (University of Punjab)  
MPhil Biotechnology (Quaid-i-Azam University, Islamabad)



**Ms. Iqra Ishaq**

Lecturer  
MS Botany (Lahore College for Women University, Lahore)  
BS Hons. Botany (Lahore College for Women University, Lahore)

**Ms. Salwa Nisar**

Lecturer  
MPhil Botany (Government College University, Lahore)  
BS (Hons). Botany (Government College University, Lahore)

**BUSINESS ADMINISTRATION****Dr. Usamah Iyyaz Billah**

Assistant Professor  
PhD. Commerce (University of the Punjab, Lahore)  
MPhil Commerce (University of the Punjab, Lahore)

**Dr. Sadia Arshad**

Assistant Professor  
PhD (National College of Business Administration and Economics)  
MPhil (Business Administration (Kinnaird College for Women, Lahore))

**Dr. Javaria Asim**

Assistant Professor  
PhD Business Administration (National College of Business Administration & Economics)  
M.Com (University of the Punjab, Lahore)

**Dr. Asma Nisar**

Assistant Professor  
PhD. Business Administration (National College of Business Administration & Economics, Lahore)  
MBA (National University of Computer & Emerging Sciences, Lahore)

**Dr. Anam Tariq**

Assistant Professor  
PhD Accounting and Finance (University of Central Punjab, Lahore)  
MPhil Commerce (University of Central Punjab, Lahore)

**Ms. Sara Aslam**

Lecturer  
MSc. HRM (University of Glasgow, Scotland, UK)  
MBA (University of Management and Technology, Lahore)

**CHEMISTRY****Dr. Rahila Huma**

Associate Professor  
PhD Chemistry (University of the Punjab, Lahore)  
MPhil Chemistry (University of the Punjab, Lahore)

**Dr. Rubina Munir**

Assistant Professor  
PhD Chemistry (University of the Punjab, Lahore)  
MPhil Chemistry (University of the Punjab, Lahore)

**Dr. Faryal Chaudhry**

Assistant Professor  
PhD. Chemistry (University of the Punjab, Lahore)  
MSc. Chemistry (University of the Punjab, Lahore)

**Dr. Amna Yousaf**

Assistant Professor  
PhD. Chemistry (University of the Punjab, Lahore)  
MS Chemistry (University of the Punjab, Lahore)

**Dr. Anum Hayat**

Assistant Professor  
PhD Chemistry (Forman Christian College, Lahore)  
MPhil Chemistry (Forman Christian College, Lahore)

**Ms. Ayesha Roohi**

Lecturer  
MPhil Chemistry (University of the Punjab, Lahore)  
MSc. Chemistry (University of the Punjab, Lahore)

**Ms. Anum Khaleeq**

Lecturer  
MPhil Chemistry (University of the Punjab, Lahore)  
BSc (Hons) Chemistry (University of the Punjab, Lahore)

**Ms. Fatima Ashraf**

Lecturer  
MPhil Applied Chemistry (University of Engineering and Technology, Lahore)  
MSc Applied Chemistry (University of Engineering and Technology, Lahore)

**Ms. Zunera Umar**

Lecturer  
MS Chemistry (University of the Punjab, Lahore)  
BS Chemistry (University of the Punjab, Lahore)

**COMPUTER SCIENCE****Dr. Sidra Zafar**

Assistant Professor  
PhD Computer Science (Lahore College for Women University)  
MS Computer Science (Lahore College for Women University)

**Ms. Jaweria Manzoor**

Assistant Professor  
MS Computer Science (Kinnaird College for Women, Lahore)  
MS TQM (University of the Punjab, Lahore)  
BS Computer Science (Kinnaird College for Women, Lahore)

**Dr. Ghousia Usman**

Assistant Professor  
PhD Computer Science (Lahore College for Women University, Lahore)  
MPhil Computer Science (Lahore College for Women University, Lahore)

**Ms. Amna Ali**

Lecturer  
MPhil Computer Science (Kinnaird College for Women, Lahore)  
BS Computer Science (Kinnaird College for Women, Lahore)

**Ms. Rida Hijab Basit**

Lecturer  
MS Computer Science (University of Engineering and Technology, Lahore)  
BS Computer Science (Kinnaird College for Women, Lahore)

**Ms. Arfa Dilawari**

Lecturer  
MSc. Electrical Engineering (University of Engineering and Technology, Lahore)  
BSc. Electrical Engineering (University of Engineering and Technology, Lahore)

**Ms. Attiya Khan**

Lecturer  
MS Computer Science (Kinnaird College for Women, Lahore)  
BS (hons) Computer Science (University of Engineering and Technology, Lahore)

**Ms. Rabia Abid**

Lecturer  
MPhil Computer Science (Kinnaird College for Women, Lahore)  
MSc Information Technology (University of the Punjab, Lahore)

**ECONOMICS****Ms. Zubda Zia-Ur-Rehman**

Assistant Professor  
MPhil Political Science (Kinnaird College for Women, Lahore)  
MA Economics (University of the Punjab, Lahore)

**Ms. Farhat Iqbal Awan**

Assistant Professor  
MPhil Economics (University of the Punjab, Lahore)  
MA Economics (University of the Punjab, Lahore)

**Ms. Sukaina Riaz**

Assistant Professor  
MPhil Economics (Government College University, Lahore)  
MA Economics (University of the Punjab, Lahore)

**Ms. Salaha Waheed**

Lecturer  
MBA (Forman Christian College, Lahore)  
BS (Hons). Economics (Government College University, Lahore)

**Ms. Anum Abdullah**

Lecturer  
MS Economics (Lahore University of Management Sciences, Lahore)  
BSc. Economics (Lahore School of Economics, Lahore)



## EDUCATION

### Dr. Maria Shiraz

Assistant Professor  
PhD Education (University of Education, Lahore)  
MPhil Education (University of Education, Lahore)

### Dr. Qurratulain Rehan

Assistant Professor  
PhD Education (Lahore College for Women, University)  
MPhil English Language Teaching (Kinnaird College for Women, Lahore)

### Dr. Mazna Toosy

Lecturer  
PhD Education (Lahore College for Women University)  
MPhil Education (Beaconhouse National University)

### Ms. Farzana Iqbal

Lecturer  
MPhil Education (University of the Punjab)  
MA Education (University of the Punjab)

### Ms. Maham Muzamil

Lecturer  
MPhil Education (University of Lahore)  
M.ED Education (University of Education, Lahore)

### Ms. Shafaq Rizwan

Lecturer  
MPhil Education (University of the Punjab)  
BS (Hons) Education (University of the Punjab)

## ENGLISH/ENGLISH LITERATURE

### Ms. Mahwish Khan

Lecturer  
MPhil English Literature (Kinnaird College for Women, Lahore)  
MA (Beaconhouse National University, Lahore)

### Prof. Dr. Waseem Anwar

Professor/Director ICPWE  
PhD English (Indiana University of Pennsylvania, USA)  
MPhil English (University of Punjab, Lahore)

### Prof. Nasreen Z. Pasha

Professor  
MA TEFL (Allama Iqbal Open University, Lahore)  
MA English Literature (University of the Punjab, Lahore)

### Prof. Nadia Anjum

Professor  
MA (University of the Punjab, Lahore)  
BA (University of the Punjab, Lahore)

### Ms. Sadia Ghaznavi

Assistant Professor  
MPhil English Literature (Kinnaird College for Women, Lahore)  
MA (Kinnaird College for Women, Lahore)

### Ms. Zahra Hanif

Lecturer  
MPhil English Literature (Kinnaird College for Women, Lahore)  
BA English Literature (Kinnaird College for Women, Lahore)

### Ms. Numrah Mehmood

Lecturer  
MPhil English (Forman Christian College, Lahore)  
MA English (Forman Christian College, Lahore)

### Ms. Arjamand Bano

Lecturer  
MPhil English (Government College University, Lahore)  
MA English (Lahore College for Women University, Lahore)

### Ms. Rija Ahsan

Lecturer  
MPhil English Literature (Kinnaird College for Women)  
BA (Hons) English (Literature (Kinnaird College for Women))

### Ms. Maryam Amjad Ali

Lecturer  
MPhil English (University of the Punjab)  
BS (Hons) English (University of the Punjab)

### Ms. Inbisat Shuja

Lecturer  
MPhil English Literature (Kinnaird College for Women, Lahore)  
BA (Hons) English Literature (Kinnaird College for Women, Lahore)

### Ms. Qurat Ul Ain Khalil

Lecturer  
MPhil English Literature (Kinnaird College for Women, Lahore)  
BA (Hons) English Literature (Kinnaird College for Women, Lahore)

### Ms. Sahar Hamid

Lecturer  
MPhil English (University of the Punjab, Lahore)  
BA (Hons) English Literature (Kinnaird College for Women, Lahore)

### Ms. Faryal Munir

Lecturer  
MA English Literature (Government College University, Lahore)  
BA (University of Punjab)

## ENVIRONMENTAL SCIENCES

### Dr. Almas Hamid

Associate Professor  
PhD Environmental Sciences (University of the Punjab, Lahore)  
MPhil Environmental Sciences (Kinnaird College for Women, Lahore)

### Dr. Helen Khokhar

Associate Professor/Dean of Intermediate Program  
PhD Environmental Management (National College of Business Administration & Economics, Lahore)  
MPhil Environmental Science (Kinnaird College for Women, Lahore)

### Prof. Dr. Ghazala Yaqub

Professor/Head Research Operations  
PhD Chemistry (Lahore College for Women University, Lahore)  
MS Chemistry (Lahore College for Women University, Lahore)

### Dr. Sadia Saif

Assistant Professor  
PhD Environmental Science (Lahore College for Women University, Lahore)  
MS Applied Environmental Science (Lahore College for Women University, Lahore)

### Dr. Sana Akhtar

Assistant Professor  
PhD Environmental Sciences (University of the Punjab, Lahore)  
MPhil Environmental Science (University of the Punjab, Lahore)

### Dr. Syeda Amber Fatima

Assistant Professor  
PhD Environmental Sciences (University of the Punjab, Lahore)  
MPhil Environmental Sciences (University of the Punjab, Lahore)

## FINE ARTS

### Ms. Mizna Zulfiqar

Associate Professor  
MA (Hons) Visual Art (National College of Arts, Lahore)  
BFA (National College of Arts, Lahore)

### Ms. Kiran Saeed

Assistant Professor  
MA (Hons) Visual Art (National College of Arts, Lahore)  
BFA (National College of Arts, Lahore)

### Ms. Amra Fatima Khan

Assistant Professor  
MA (Hons) Visual Art ((National College of Arts, Lahore)  
BFA (National College of Arts, Lahore)

### Ms. Rebecca Arfan

Lecturer  
MS Fine Arts (Lahore College for Women University, Lahore)  
BFA (National College of Arts, Lahore)

### Ms. Maryam Tahir

Lecturer  
BFA (National College of Arts, Lahore)

### Ms. Yumna

Lecturer  
MA Arts and Design (Beaconhouse National University, Lahore)  
BFA Fine Arts (Mehran University of Engineering and Technology)

## FOOD SCIENCE AND HUMAN NUTRITION

### Dr. Mahnaz Nasir Khan

Assistant Professor  
PhD Home Economics (University of the Punjab, Lahore)  
MPhil Food & Nutrition (Allama Iqbal Open University, Islamabad)



**Dr. Rabia Naz**

Assistant Professor  
PhD Food Technology  
(University of Agriculture,  
Faisalabad)  
MSc (Hons) Food Technology  
(University of Agriculture,  
Faisalabad)

**Dr. Nadia Akram**

Assistant Professor  
PhD Food Technology  
(University of Agriculture,  
Faisalabad)  
MS Food Technology  
(University of Agriculture,  
Faisalabad)

**Ms. Nasreen Kausar**

Lecturer  
MPhil Food Science & Human  
Nutrition (Kinnaird College for  
Women, Lahore)  
MSc. Food & Nutrition  
(Government College of Home  
Economics, Lahore)

**Ms. Fasiha Ilyas**

Lecturer  
MSc. Hons. Home Economics  
(Food & Nutrition) (University  
of Agriculture, Faisalabad)  
BS. Hons. Home Economics  
(Lahore College for Women,  
Lahore)

**Ms. Syeda Aliya Sherazi**

Lecturer  
MPhil Home Economics  
(Government College of Home  
Economics, Lahore)  
BS Home Economics  
(Government College of Home  
Economics, Lahore)

**Ms. Nida Tasneem Khan**

Lecturer  
MPhil Food Science & Human  
Nutrition (Kinnaird College for  
Women, Lahore)  
BS Hons. Home Economics  
(Government College of Home  
Economics, Lahore)

**Ms. Qurat ul Ain Aleem**

Lecturer  
MPhil Public Health (University  
of the Punjab, Lahore)  
MSc. Home Economics (Govt.  
College of Home Economics  
Gulberg, University of the  
Punjab, Lahore)

**Ms. Samawia Qureshi**

Lecturer  
MPhil Food and Nutrition  
(University of Home  
Economics, Lahore)  
BS (Hons) Home Economics  
(University of Home  
Economics, Lahore)

**FRENCH****Ms. Amber Jaffer**

Lecturer  
MA French (Kinnaird College  
for Women, Lahore)

**GEOGRAPHY****Dr. Ambreena Javaid**

Assistant Professor  
PhD Geomatics (University of  
the Punjab, Lahore)  
MPhil Geography (University  
of the Punjab, Lahore)

**Ms. Rabia Shahid**

Assistant Professor  
MS Geography (Government  
College University, Lahore)  
MSc. Geography (University of  
the Punjab, Lahore)

**Ms. Shumaila Majeed****Quershi**

Assistant Professor  
MPhil Geomatics (University of  
the Punjab, Lahore)  
MSc. Computer Science  
(Institute of Management &  
Sciences, Lahore)  
MSc. Geography (University of  
the Punjab, Lahore)

**Ms. Jasia Jawad**

Lecturer  
MS Remote Sensing and  
Geographical Information  
System (National University  
of Science and Technology,  
Islamabad)  
BS (Hons) Geography  
(Kinnaird College for Women,  
Lahore)

**INTERNATIONAL  
RELATIONS****Dr. Aiysha Safdar Ali**

Associate Professor  
PhD International Relations  
(University of the Punjab,  
Lahore)  
MPhil International Relations  
(Kinnaird College for Women,  
Lahore)

**Dr. Asia Mukhtar**

Assistant Professor  
PhD. International Relations  
(University of the Punjab,  
Lahore)  
MPhil Political Science  
(University of the Punjab,  
Lahore)

**Dr. Qudsia Akram**

Assistant Professor  
PhD International Relations  
(University of the Punjab,  
Lahore)  
MPhil International Relations  
(Quaid-i-Azam University,  
Islamabad)

**Dr. Shireen Mushtaq**

Assistant Professor  
PhD International Relations  
(University of the Punjab,  
Lahore)  
MPhil International Relations  
(Kinnaird College for Women,  
Lahore)

**Ms. Ramsha Tariq**

Lecturer  
MPhil International Relations  
(Kinnaird College for Women,  
Lahore)  
BS (Hons) International  
Relations (Lahore College for  
Women University)

**ISLAMIC STUDIES****Ms. Tasneem Niazi**

Assistant Professor  
MPhil Islamic Studies (Minhaj  
University, Lahore)  
MA Islamic Studies (Islamia  
University of Bahawalpur,  
Bahawalpur)

**Ms. Sara Iqbal**

Assistant Professor  
MPhil Islamic Studies  
(University of the Punjab,  
Lahore)  
MA Islamic Studies (University  
of the Punjab, Lahore)

**Ms. Faiza Batool**

Lecturer  
MPhil Islamic Studies  
(University of the Punjab,  
Lahore)  
MA Islamic Studies (University  
of the Punjab, Lahore)

**Ms. Samawia Saeed**

Lecturer  
MA Islamic Studies (Lahore  
College for Women University)  
MA ELT (Kinnaird College for  
Women, Lahore)

**LAW****Ms. Shaffaf Shahid**

Assistant Professor  
LLM (Washington University in  
St. Louis)  
LLB (Lahore University of  
Management Sciences)

**Ms. Ayesha Jawad**

Assistant Professor  
LLM (University of Kent, UK)  
MSc. International Relations  
(Quaid-i-Azam University,  
Islamabad)  
LLB (University of the Punjab,  
Lahore)

**Ms. Sana Akhter**

Assistant Professor  
LLM (University of the Punjab,  
Lahore)  
LLB (University of the Punjab,  
Lahore)

**Ms. Maira Bokhari**

Assistant Professor  
LLB (University of London)

**MATHEMATICS****Ms. Zeba Sohail**

Professor  
MPhil Applied Mathematics  
(National College of Business  
Administration & Economics,  
Lahore)  
MSc. (University of the Punjab,  
Lahore)

**Dr. Sadaf Butt**

Assistant Professor  
PhD Mathematics (COMSATS  
University Islamabad, Lahore  
Campus)  
MPhil Mathematics (Lahore  
Leads University, Lahore)

**Ms. Shamaila Waheed**

Assistant Professor  
MPhil Mathematics  
(Government College  
University, Lahore)  
MSc. (University of the Punjab,  
Lahore)

**Ms. Iqra Saeed**

Lecturer  
MS Mathematics (University of  
the Punjab, Lahore)  
BS (Hons) Mathematics  
(University of the Punjab,  
Lahore)



**Ms. Fakhra Gulzar**

Lecturer  
MS Mathematics (National University of Computer & Emerging Science, Islamabad)  
BS. (Hons) (Lahore College for Women University, Lahore)

**Ms. Zara Nadeem**

Lecturer  
MPhil Mathematics (University of Punjab, Lahore)  
BS (Hons) Mathematics (University of Punjab, Lahore)

**Ms. Tuba Parvez**

Lecturer  
MPhil Mathematics (University of Engineering & Technology, Lahore)  
MSc. Mathematics (University of Engineering & Technology, Lahore)

**Ms. Iqra Yaqoot**

Lecturer  
MS Mathematics (National University of Computer and Emerging Sciences, Lahore)  
BSc (Hons) Mathematics (Kinnaird College for Women, Lahore)

**Ms. Fatima Aamir**

Lecturer  
MS Mathematics (Lahore College for Women University)  
BS Mathematics (Kinnaird College for Women, Lahore)

**MEDIA STUDIES****Dr. Kiran Karamat**

Assistant Professor  
PhD Communication Studies (University of the Punjab, Lahore)  
MS Mass Communication (Lahore College for Women University, Lahore)

**Dr. Maira Qaddos**

Assistant Professor  
PhD Communication Studies (University of the Punjab)  
MPhil Communication Studies (University of the Punjab)

**Ms. Komal Ahmed**

Assistant Professor  
MPhil Media Studies (Kinnaird College for Women, Lahore)  
BS Hons. (Lahore College for Women University, Lahore)

**Ms. Amna Waheeda**

Lecturer  
MPhil Mass Communication (Beaconhouse National University Lahore)  
MA (Beaconhouse National University Lahore)

**Ms. Sadia Safir Tarar**

Lecturer  
MPhil Communications Studies (University of the Punjab, Lahore)  
BSc. Hons. (Forman Christian College, Lahore)

**Ms. Sheezah Taimouri**

Lecturer  
MS Media & Communications Studies (International Islamic University, Islamabad)  
BSc. Hons. Media & Communications Studies (International Islamic University, Islamabad)

**Ms. Sidra Arif**

Lecturer  
MPhil Mass Communications (Kinnaird College for Women, Lahore)  
MSc. Mass Communications (National University of Modern Languages, Islamabad)

**MUSIC****Ms. Mughira Ahmad**

Assistant Professor  
BA Hons. Musicology (National College of Arts, Lahore)

**Mr. Abdul Rauf**

Assistant Professor  
MA Political Science (University of the Punjab, Lahore)

**PERSIAN****Dr. Attiya Haider**

Assistant Professor  
PhD Persian (University of the Punjab, Lahore)  
MPhil Persian (University of the Punjab, Lahore)

**PHILOSOPHY****Ms. Hadiqa Atif**

Lecturer  
MPhil Philosophy (University of the Punjab, Lahore)  
BS Hons. Philosophy (University of the Punjab, Lahore)

**PHYSICS****Ms. Aysha Aftab**

Lecturer  
MPhil Solid State Physics (University of the Punjab, Lahore)  
MSc. Physics (University of the Punjab, Lahore)

**Ms. Samia Qamar**

Assistant Professor  
MSc. Electrical Engineering (University of Engineering & Technology, Lahore)  
BSc. Electrical Engineering (University of Engineering & Technology, Lahore)

**Dr. Faiza Uzma**

Assistant Professor  
PhD (University of Science and Technology, China)  
MS (National University of Science and Technology)

**Ms. Saima Mubeen**

Assistant Professor  
BSc. Electrical Engineering (University of Engineering & Technology, Lahore)

**Ms. Umme Ayman**

Lecturer  
MPhil Applied Physics (University of Engineering & Technology, Lahore)  
BS Hons. Physics (Government College University, Lahore)

**Ms. Ayesha Asghar**

Lecturer  
MS Physics (Lahore College for Women University, Lahore)  
BS Computational Physics (University of the Punjab, Lahore)

**Ms. Rabia Shaharyar**

Lecturer  
MS Physics (Lahore College for Women University)  
BS Physics (Lahore College for Women University)

**POLITICAL SCIENCE AND PAKISTAN STUDIES****Dr. Asma Awan**

Associate Professor/ Dean of Graduate Program  
PhD Political Science (University of the Punjab, Lahore)  
MPhil (University of the Punjab, Lahore)

**Dr. Khushboo Ejaz**

Associate Professor  
PhD. South Asian Studies (PU, Lahore)  
M.Phil South Asian Studies (PU, Lahore)

**Dr. Syed Iazaz Ahmad Bukhari**

Assistant Professor  
PhD History (Islamia University of Bahawalpur)  
MPhil Pakistan Studies (Islamia University of Bahawalpur)

**Ms. Bushra Jabeen**

Assistant Professor  
MPhil Pakistan Studies (Minhaj University, Lahore)  
MA History (University of the Punjab, Lahore)  
MA Urdu (University of the Punjab, Lahore)

**Ms. Zoya Shaffay**

Lecturer  
MPhil Political Science (Kinnaird College for Women, Lahore)  
BS Hons. (Kinnaird College for Women, Lahore)

**Ms. Tabita Victor**

Lecturer  
MPhil Political Science (Government College University, Lahore)  
MA Political Science (Forman Christian College, Lahore)

**Ms. Dure Shahwar Bano**

Lecturer  
MPhil Political Science (Government College University, Lahore)  
BS International Relations (Lahore College for Women University, Lahore)



**Ms. Sabah Mushtaq**

Lecturer  
MPhil History (Quaid-i-Azam University, Islamabad)  
MS History (Quaid-i-Azam University, Islamabad)

**PUNJABI****Ms. Satwant Kour**

Lecturer  
MS Punjabi (Lahore College for Women University)  
MA Punjabi (Lahore College for Women University)

**PSYCHOLOGY****Prof. Dr. Masha Asad Khan**

Professor/ Academic Dean of Humanities and Social Sciences  
PhD Clinical Psychology (University of the Punjab, Lahore)  
MPhil Clinical Psychology (University of the Punjab, Lahore)

**Dr. Afsheen Gul**

Associate Professor  
PhD Applied Psychology (University of the Punjab, Lahore)  
MSc. Applied Psychology (University of the Punjab, Lahore)

**Ms. Raumish Masud Khan**

Assistant Professor  
MPhil Psychology (Government College University, Lahore)  
MS Psychology (University of the Punjab, Lahore)

**Ms. Sonia Adil**

Assistant Professor  
MPhil Clinical Psychology (Kinnaird College for Women, Lahore)  
MSc. (University of the Punjab, Lahore)

**Ms. Mahira Ahmed**

Assistant Professor  
MPhil Clinical Psychology (Kinnaird College for Women, Lahore)  
MSc. (Quaid-i-Azam University)

**Ms. Zara Haroon**

Lecturer  
MPhil Clinical Psychology (Kinnaird College for Women, Lahore)  
BSc. Hons. (Kinnaird College for Women, Lahore)

**Ms. Sara Asad**

Lecturer  
MS Clinical Psychology (University of the Punjab, Lahore)  
BS Hons. Clinical Psychology (University of the Punjab, Lahore)

**Ms. Asma Majeed**

Lecturer  
MPhil Gender Studies (University of the Punjab, Lahore)  
MSc. Psychology (Government College University, Lahore)

**Ms. Zarafsheen Khalid**

Lecturer  
MS Clinical Psychology (Kinnaird College for Women, Lahore)  
BS (Hons) Applied Psychology ((Kinnaird College for Women, Lahore)

**STATISTICS****Dr. Kalsoom Akhtar**

Associate Professor  
PhD Applied Statistics (National College of Business Administration & Economics, Lahore)  
MPhil Statistics (The University of Lahore)

**Prof. Dr. Saleha Naghmi Habibullah**

Professor  
PhD. Applied Statistics (National College of Business Administration & Economics, Lahore)  
MSc. Statistics (University of Toronto, Canada)  
MSc. Statistics (University of the Punjab, Lahore)

**Dr. Naila Alam**

Assistant Professor  
PhD Statistics (National College of Business Administration and Economics, Lahore)  
MPhil Statistics (National College of Business Administration and Economics, Lahore)

**Ms. Fatima Jamil**

Lecturer  
MPhil Statistics (Kinnaird College for Women, Lahore)  
BS Hons. Statistics (Lahore College for Women University, Lahore)

**Ms. Tooba Khan**

Lecturer  
MPhil Statistics (Government College University, Lahore)  
BS Hons. Statistics (Lahore College for Women University, Lahore)

**Ms. Shaista Shumaila**

Lecturer  
MPhil Statistics (University of the Punjab, Lahore)  
MSc. Statistics (University of the Punjab, Lahore)

**TEXTILE DESIGN****Ms. Saima Jabbar**

Associate Professor  
MS Fine Arts (Lahore College for Women University, Lahore)  
Bachelor of Design (National College of Arts, Lahore)

**Ms. Fatima Imran**

Assistant Professor  
MPhil Arts and Design Education (Pakistan Institute of Fashion and Design, Lahore)  
Bachelor of Design (Kinnaird College for Women, Lahore)

**Ms. Zainab Shahid**

Lecturer  
Bachelor of Textile Design (Kinnaird College for Women, Lahore)

**Ms. Nazish Khan**

Lecturer  
Bachelor of Textile Design (Pakistan Institute of Fashion and Design, Lahore)

**URDU****Dr. Sheeba Alam**

Associate Professor  
PhD Urdu (Government College University, Lahore)  
MPhil Urdu Literature (Government College University, Lahore)

**Dr. Elizabeth Shad**

Associate Professor  
PhD Urdu (University of Education, Lahore)  
MPhil Urdu (University of Education, Lahore)

**Dr. Shazia Sajid Sulehri**

Assistant Professor  
PhD Urdu (University of Education, Lahore)  
MPhil Urdu (University of Education, Lahore)

**Dr. Faiza Butt**

Assistant Professor  
PhD. Urdu (University of the Punjab, Lahore)  
MPhil leading to PhD. (University of the Punjab, Lahore)

**Dr. Tahira Siddiqua**

Assistant Professor  
PhD. Urdu (Government College University, Lahore)  
MPhil Urdu (Government College University, Lahore)

**Ms. Misbah Tajammal**

Assistant Professor  
MPhil Urdu (Government College University, Lahore)  
MA Urdu (Forman Christian College, Lahore)

**Ms. Bushra Shereen**

Assistant Professor  
MPhil Urdu (University of Education, Lahore)  
MA Urdu (University of the Punjab, Lahore)  
MA Philosophy (University of the Punjab, Lahore)

**Dr. Sarah Sarfraz**

Assistant Professor  
PhD Urdu (Lahore Garrison University)  
MPhil Urdu (Government College University, Lahore)



**Dr. Humera Majid**

Senior Lecturer  
PhD Urdu (Government College University, Lahore)  
MPhil Urdu (Government College University, Lahore)

**Ms. Munaza Tabasum**

Lecturer  
MPhil Urdu (Forman Christian College, Lahore)  
BA (Hons) Urdu (Kinnaird College for Women, Lahore)

**ZOOLOGY****Ms. Iffat Amin**

Lecturer  
MPhil Zoology (Government College University, Lahore)  
MSc Zoology (Government College University, Lahore)

**Ms. Mehak Ayub**

Lecturer  
MPhil Environmental Sciences (Kinnaird College for Women, Lahore)  
BS Zoology (Kinnaird College for Women, Lahore)

**Ms. Rabia Riaz**

Lecturer  
MPhil Molecular Biology & Biotechnology (University of Veterinary & Animal Sciences, Lahore)  
BSc Zoology (Kinnaird College for Women, Lahore)

**Ms. Amna Amin**

Lecturer  
MPhil Zoology (University of the Punjab, Lahore)  
MSc Zoology (University of the Punjab, Lahore)

**SPORTS AND PHYSICAL EDUCATION****Dr. Ammara Rubab**

Lecturer  
PhD Sports Sciences and Physical Education (The University of Lahore)  
MPhil Sports Sciences and Physical Education (The University of Lahore)

**Administration****ACADEMIC ADMINISTRATION**

**Prof. Dr. Iram Anjum**  
Principal

**Prof. Dr. Ghazala Yaqub**  
Vice Principal

**Dr. Asma Awan**  
Dean of Graduate Program

**Prof. Dr. Iram Anjum**  
Academic Dean of Applied and Pure Sciences

**Prof. Dr. Masha Asad Khan**  
Academic Dean of Humanities and Social Sciences

**Dr. Helen Khokhar**  
Dean of Intermediate Program

**Management and Administrative Positions****Administration (Facilities and Services)**

**Lt. Col. (r) Adnan Khawar Dar**  
Manager Administration

**Finance**  
**Mr. Muhammad Irshad Ramzan**  
Finance Manager

**Hostels**  
**Ms. Elizabeth Shamsa**  
Hostel Coordinator

**Human Resources**  
**Ms. Sehr Ansar**  
Head Human Resources

**Information Technology (IT)**

**Mr. Muhammad Qadir Bakhsh**  
Manager Information Technology

**Laboratory**  
**Mr. Haseeb Akram**  
Director Laboratories

**Library**  
**Ms. Munazza Mahmood**  
Chief Librarian

**Office of Research, Innovation & Commercialization (ORIC)**  
**Prof. Dr. Shahnaz Choudhry**  
Director ORIC

**Prof. Dr. Ghazala Yaqub**  
Head Research Operations

**Business Incubation Center (BIC)**

**Ms. Meashall Usman**  
Manager Business Incubation Center

**Quality Enhancement Cell (QEC)**  
**Mr. Basharat Hameed**  
Director Quality Enhancement Cell (QEC)

**Registrar Office (Admission & Examination)**  
**Mr. Farooq Babar**  
Deputy Registrar

**Ms. Raviha Anum**  
Deputy Controller of Examination

**Security**

**Major (R) David Emmanuel**  
Manager Security

**Other Centres/Departments**  
**Ms. Abeeha Shaloom**  
Campus Counselor

**Ms. Anila Obed Arthur**  
Community Service Coordinator

**Dr. Waseem Anwar**  
Director International Centre for Pakistani Writing (ICPWE)

**Ms. Kiran Irshad**  
Program Manager



## Tentative Academic Calendar 2024 – 2025

### Fall Semester 2024

Orientation of New Students	August 19, 2024
Academic Session Begins	August 20, 2024
Deadline to Drop a Course	August 29, 2024
Milad un-Nabi**	September 16, 2024
Deadline to Withdraw a Course	October 05, 2024
Midterm Examinations	October 07 - October 18, 2024
Final Examinations	December 09 - 20, 2024
Christmas and Winter break	December 21 - January 17, 2025
Declaration of Result	January 15, 2025

### Spring Semester 2025

Academic Session Begins	January 20, 2025
Deadline to Drop a Course	January 30, 2025
Kashmir Day*	February 05, 2025
Deadline to Withdraw a Course	March 05, 2025
Midterm Examinations	March 17 - March 28, 2025
Pakistan Day*	March 23, 2025
Eid-ul-Fitr Holidays**	March 31 - April 02, 2025
Easter and Spring Break	April 14 - April 21, 2025
May Day*	May 01, 2025
Final Examinations	May 26 - June 05, 2025
Eid-ul-Adha Holidays**	June 06 - June 10, 2025
Declaration of Result	June 20, 2025

\*Gazetted / Public Holidays

\*\*Holidays Subject to the appearance of the moon





Justice Nasira Iqbal



Bano Qudsia



Zubeida Agha



Ayesha Rabia



Bapsi Sidhwa

*Celebrating*  
**111** *Years of*  
*Educational Excellence*  
*in South Asia*



Asma Jahangir



Sara Sulehri



Kamini Kaushal



Navid Iftikhar



Amna Umar

